

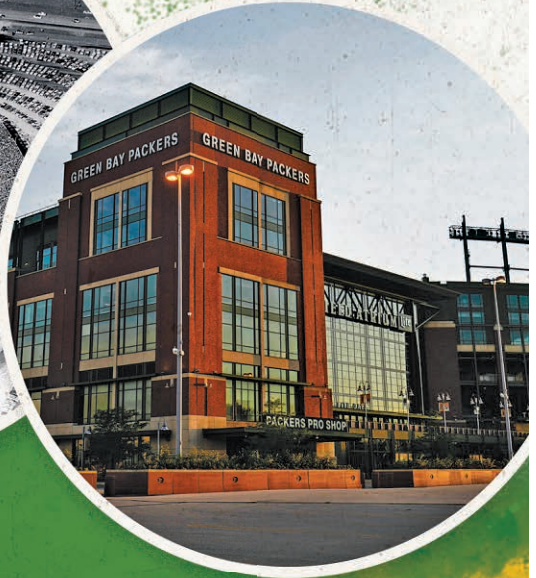
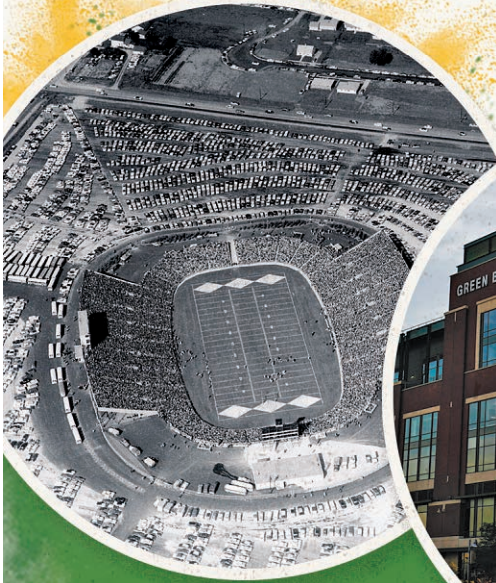
Village of Ashwaubenon



*Sesquicentennial
Celebration*



CONGRATULATIONS
VILLAGE OF
ASHWAUBENON
ON CELEBRATING 150 YEARS
1872-2022



GREEN BAY PACKERS
GIVEBACK 

Learn more at packers.com/giveback



Village Administration



Mary Kardoskee
Village President



Joel Gregozeski
Village Manager



Greg Wenholz
Finance Director



Brian Uhl
Chief of
Public Safety



Doug Martin
Director of
Public Works



Rex Mehlberg
Director of Parks,
Recreation &
Forestry



Aaron Schuette
Community
Development
Director



Kris Teske
Village Clerk

Past Village Presidents



John Monfort
1977 - 1981



Tony Frigo
1981 - 1991



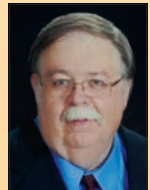
Ted Pamperin
1991 - 2003



**Norbert 'Nubs'
DeCleene**
2003 - 2007



Jerry Menne
2007 - 2009



Mike Aubinger
2009 - 2017



Village Trustees



Mary Kardoskee
Village President



Kelly Servais
Wards 1 & 2



Gary Paul
Wards 3 & 4



Chris Zirbel
Wards 5 & 6



Jay Krueger
Wards 7 & 8



Steve Kubacki
Wards 9 & 10



Tracy Flucke
Wards 11 & 12



Table of Contents

Village Administration	Page 3
Past Village Presidents	Page 3
Community Letters.....	Page 5
Schedule of Events	Page 12
Town of Ashwaubenon	Page 16
How Ashwaubenon Was Named.....	Page 23
Ashwaubomay’s Burial Site.....	Page 24
Ashwaubenon’s Historic Schools.....	Page 27
Ashwaubenon Schools Today	Page 31
The Oneida Nation.....	Page 34
Historic Churches.....	Page 38
Churches Today	Page 38
Hockers Brick and Tile	Page 40
Ashwaubenon Water and Sewer Utility.....	Page 43
Ashwaubenon Historical Society: Celebrating 50 Years.....	Page 44
Village Government	Page 46
Commercial Development	Page 49
Parks, Recreation and Forestry Department.....	Page 53
Forestry Department.....	Page 56
Titletown	Page 58
Sports in Ashwaubenon	Page 60
Volunteer Fire Department	Page 62
Ashwaubenon Rescue Squad.....	Page 62
Department of Public Safety.....	Page 63
Volunteers.....	Page 65
Public Works and Engineering Departments	Page 67
Community Development Department	Page 67
Brown County Veterans Memorial Arena.....	Page 68
Resch Center and Expo.....	Page 69
Brown County Airport.....	Page 70
Austin Straubel Airport.....	Page 71
Ashwaubenon Industrial Park.....	Page 72
Future	Page 75



Community Letter

OFFICE OF THE VILLAGE PRESIDENT
Mary Kardoskee
Village President
mkardoskee@ashwaubenon.gov



Congratulations to the Village of Ashwaubenon on our 150th anniversary in 2022. We have changed from an agricultural Town in 1872, to the strong, vibrant and thriving Village that we have become 150 years later.

These changes would not be possible without great resident input and a committed business and manufacturing community to help us move forward into the future.

Thank you to everyone involved in making the Village of Ashwaubenon the successful community it is today – 150 years later!

Sincerely,

A handwritten signature in black ink that reads "Mary Kardoskee." The signature is fluid and cursive.

Mary Kardoskee
Village President

2155 Holmgren Way Ashwaubenon, Wisconsin 54304-4605 P (920) 492-2301 F (920) 492-2328
ashwaubenon.gov

Community Letter



TAMMY BALDWIN
UNITED STATES SENATOR

August 2022

Dear Friends,

I am delighted to extend my heartfelt congratulations on the 150th anniversary of the Village of Ashwaubenon. This remarkable milestone and the history of your village deserves to be celebrated.

Again, congratulations on this milestone! I am proud to honor this momentous occasion. I know that the Village of Ashwaubenon will continue to be a shining asset to the Brown County area for years to come. Best wishes for your continued growth and success. Please do not hesitate to reach out if I can be of any assistance to you.

Sincerely,

A handwritten signature in blue ink that reads "Tammy Baldwin".

Tammy Baldwin
United States Senator

NOT PRINTED AT GOVERNMENT EXPENSE

Community Letter

RON JOHNSON
WISCONSIN

United States Senate

WASHINGTON, DC 20510

COMMITTEES:
BUDGET
COMMERCE, SCIENCE
AND TRANSPORTATION
FOREIGN RELATIONS
HOMELAND SECURITY AND
GOVERNMENTAL AFFAIRS

April 13, 2022

Village of Ashwaubenon
2155 Holmgren Way
Ashwaubenon, WI 54304

Dear Citizens of the Village of Ashwaubenon,

Congratulations on the 150th anniversary of the Village of Ashwaubenon. This is an exciting milestone for your beautiful and historic village.

Strong, local communities are the backbone of our country. Ashwaubenon is a destination – home to our beloved Packers, and so much more! You can take pride in your special community at this exciting time and enjoy and celebrate what makes Ashwaubenon unique.

Best wishes for a festive and successful sesquicentennial celebration!

Sincerely,



Ron Johnson
United States Senator

WASHINGTON OFFICE:
328 HART SENATE OFFICE BUILDING
WASHINGTON, DC 20510
(202) 224-5323

OSHKOSH OFFICE:
219 WASHINGTON AVENUE, SUITE 100
OSHKOSH, WI 54901
(920) 230-7250

MILWAUKEE OFFICE:
517 EAST WISCONSIN AVENUE, ROOM 408
MILWAUKEE, WI 53202
(414) 276-7282

MADISON OFFICE:
5315 WALL STREET, SUITE 110
MADISON, WI 53718
(608) 240-9629

<http://www.ronjohnson.senate.gov>

Community Letter



Congressional Record

PROCEEDINGS AND DEBATES OF THE 117th CONGRESS, SECOND SESSION

WASHINGTON, Monday, August 8, 2022

House of Representatives

IN RECOGNITION OF the 150th Anniversary of the Village of
Ashwaubenon.

HON. MIKE GALLAGHER
OF WISCONSIN
IN THE HOUSE OF REPRESENTATIVES
Monday, August 8, 2022

Mr. Gallagher. Madam Speaker, today I rise in recognition of the 150th Anniversary of the Village of Ashwaubenon.

As the Village of Ashwaubenon celebrates this historic milestone, we must look back on the outstanding history that has shaped the community. The Town of Ashwaubenon was established by the State of Wisconsin Legislature in 1872 and was later incorporated into the Village of Ashwaubenon in 1977. The Village of Ashwaubenon began as a small agricultural community, and throughout the years, has grown significantly as the community welcomed homes, small businesses, schools, and several social establishments.

The residents of the Village of Ashwaubenon are blessed to live in such a special place located in Northeast Wisconsin. With a growing population and friendly atmosphere, the Village of Ashwaubenon has expanded to include portions of two school districts including the Ashwaubenon School District and the West De Pere School District. The Village and the Ashwaubenon School District share several outstanding services such as the Performing Arts Center and the 8-lane indoor community pool. I commend the outstanding support that the Village of Ashwaubenon has shown to the members of the community throughout the years.

Over the last 150 years, the Village of Ashwaubenon has grown to have over 17,000 residents, and stretches along the Fox River and surrounds Lambeau Field. With the population increasing, residents of Ashwaubenon take pride in the number of successful businesses that bring families to the area from throughout Northeast Wisconsin. Throughout the years, the Village has partnered with local businesses to host several family-friendly events including the summer concert series held in Klipstine Park and the Food A-Fare Truck Rally in Ashwaubomay Park.

The Village of Ashwaubenon is known as the vibrant and diverse community that serves as a regional hub for entertainment in Northeast Wisconsin. The Village of Ashwaubenon includes the historic National Railroad Museum, the popular Resch Center, and many successful small businesses. The lasting partnerships between the Village and surrounding rural businesses have brought individuals from all over the state to experience the wonderful things that the Village of Ashwaubenon has to offer.

It is my honor to commemorate the Village of Ashwaubenon's Sesquicentennial. I invite all members of this body to join me in celebrating this historic milestone. It is an honor to represent the Village of Ashwaubenon in Northeast Wisconsin, and I'm proud to give it the highest degree of recognition.

Community Letter



13-Time World Champions
Super Bowl Champions
I, II, XXXI, XLV

MARK H. MURPHY
President & Chief Executive Officer

Mary Kardoskee
Village of Ashwaubenon President

Dear Mary,

How exciting to be celebrating your 150th Anniversary!

On behalf of everyone at the Green Bay Packers, I extend my sincerest congratulations to the Village of Ashwaubenon on recognizing its sesquicentennial this year.

Ashwaubenon has a proud history and plays an important role in the success of Northeastern Wisconsin. The Packers are fortunate to have Ashwaubenon as a fine community partner, especially as we continue to develop Titledown into an asset for residents and visitors alike. Our players and coaches spend hours on our practice fields in Ashwaubenon, honing their skills for the season, a practice that goes back to 1957.

We are proud to help Ashwaubenon recognize this milestone and look forward to a wonderful celebration.

Sincerely,

A handwritten signature in black ink that reads "Mark H. Murphy".

Mark H. Murphy
President and CEO
Green Bay Packers

Green Bay Packers · Lambeau Field
1265 Lombardi Avenue (54304) · P.O. Box 10628, Green Bay, WI 54307-0628
Main Office: 920.569.7500 · Ticket Office: 920.569.7501 · www.packers.com

“Community is about doing something better together that makes belonging matter.”

Brian Solis



Everyone at Schneider congratulates the Village of Ashwaubenon on your 150th anniversary. We've been proud to call Ashwaubenon the home of our corporate offices for over 40 years.

SCHNEIDER

schneider.com
schneiderjobs.com



CONGRATULATIONS
ON
150 YEARS!

Our patients are the best advocates and spokespersons for our successful services! We would love to add you to our family!

Having a **bad back as a plumber** does not go well. I must watch what I do. Dr. Ray has kept me on my feet and earning a living. The care is excellent! The staff is friendly and warm. - **Jerry**

I suffered from **low back pain and knee pain**, 6-7/10 pain levels. Dramatic results, I feel so much better. I felt Dr. Roddan listened closely to my symptoms. Dawn is very good at conducting therapy. After weekly visits at ProCare, I feel great without surgery! If you stay consistent, **ProCare will get you healthy.** - **Aaron**

Try working with Dr. Fisher...he has helped my condition so very much. One thing that sets their office above the rest is their **laser therapy and decompression treatments.** I am very confident in recommending Dr. Fisher. - **Ireta**

We offer weight loss assistance, neuropathy, spinal decompression therapy, nutritional counseling, and many other chiropractic care services.

Call ProCare Chiropractic Clinic Green Bay.

929-496-6000 • www.procarechiropractic.com

*SERVING
THE ASHWAUBENON
COMMUNITY
SINCE 1978!*

ProCare
Chiropractic
Neurology Center

Pro Care Chiropractic Clinic

920 Hansen Road, Suite F, Green Bay • 920-496-6000

www.procarechiropractic.com



Schedule of events

MONDAY, AUGUST 8

Grand Opening Ceremony at Ashwaubenon High School's Goelz Field

- **4:30-6:30 p.m.** Green Bay Packer Lumberjack Band warms up the crowd.
- **5:30-6:30 p.m.** Free ice cream for all, sponsored by Baskin Robbins! Ice cream served by the Ashwaubenon Optimists!
- **6:30 p.m.** Program begins. Opening remarks
- **6:30 p.m.** Flag ceremony. National anthem. Service Recognition.
- Performances by the Oneida Dancers and the Ashwaubenon High School Band & Encore.
- Singing of Ashwaubenon High School song!

TUESDAY, AUGUST 9

- Ashwaubenon Night at Capital Credit Union Park with the Green Bay Packers. Buy one \$5 ticket, get one free. All tickets get a free "Festy Brat"! Online promotion code: Ashwaubenon.
- Vocal performance at game by Brian James.

WEDNESDAY, AUGUST 10

- VIP Recognition dinner at the Ashwaubenon Community Center. Elected officials both current and past, business leaders, community organization representatives and community stalwarts! Sponsored by the Green Bay Packers "GIVEBACK" program.

THURSDAY, AUGUST 11

- **5:00-6:00 p.m.** Scavenger Hunt Turn-in at the Ashwaubenon Performing Arts Center. Prizes for all who complete the hunt! Instructions on-line at www.ashwaubenon.gov/150 Organized by the Elks Club!
- **5:00-6:00 p.m.** Vehicle inspection for the kids! Ashwaubenon Public Safety and Public Works vehicles will be on display in the high school parking lot between the pool and the performing arts center!
- **4:30-6:00 p.m.** Building tour of the Ashwaubenon Historical Society (936 Anderson Drive) FREE!
- **5:00-6:00 p.m.** Facility tour of the Ashwaubenon Community Pool and the Ashwaubenon Performing Arts Center. Haven't seen these wonderful new facilities yet? Now's your chance!
- **6:00 p.m.** Village Wide Talent show at the Ashwaubenon Performing arts center. FREE. Get a registration form at www.ashwaubenon.gov/150 Random prizes given!
- **FREE CONCERT** - Sam Llanas of The Bodeans at Epic Event Center. No advanced tickets needed.



Schedule of events



FRIDAY, AUGUST 12

(All Friday events at Ashwaubomay Park – 2881 S. Broadway)

- 4:30–8:30 p.m. Food Truck Rally! TEN TRUCKS! Beverage tent on site!
- 4:30–6:30 p.m. music on site
- 6:30–9:30 p.m. BAND: BOOGIE & THE YO- YO'Z! WOW!



SATURDAY, AUGUST 13

(All Saturday activities at Ashwaubomay Park – 2881 S. Broadway)

ASHWAUBENON BLAST!

- 9:00 a.m.–3:00 p.m. CAR SHOW....No need to pre-register...just show up!
- 10:30 a.m.–7:00 p.m. Carnival games, Bounce Houses, Rock Wall, etc... (\$5 Wristband needed)
- 1:00–4:00 p.m. Balloon Animal maker on site (\$5 wristband needed)
- 4:00–7:00 p.m. Children's face painter on site (\$5 wristband needed)
- 11:00 a.m.–6:00 p.m. Ashwaubomay Lake open. FREE SWIM!
- 11:00 a.m.–2:00 p.m. BAND: N.E.W. PIANO GUYS
- 3:00–6:00 p.m. BAND: DOO WOP DADDIES (50's)
- 6:30–9:30 p.m. BAND: JOHNNY WAD
- 9:35–10:00 p.m. FIREWORKS!!!!

Beverage & Food tents on-site run by community organizations!

SUNDAY, AUGUST 14

(All Sunday activities at the Ashwaubenon Community Center – 900 Anderson Drive)

- 9:00 a.m.–1:00 p.m. Pancake & Porky Breakfast at the community center (inside).
"Uncle Pancake" will be serving w/ assistance from the Ashwaubenon Paid On-Call Firefighters!
- 9:00 a.m.–3:00 p.m. Vendor Fair / Arts & Crafts (outside) Go online to register as a vendor or stop by the community center for a packet!
- 10:00 a.m.–1:00 p.m. BAND: Jerry Voelker & the Jolly Gents! Jerry performed at our centennial in 1972!




Former Senator and Ashwaubenon resident Jerry Van Sistine and Village President Ted Pamperin discuss affairs of the Village (1980's / 1990's)

24-Hour Towing
by
DETAIL TOWING

Also:
Reliable Roadside Assistance:
24 hours a day,
7 days a week.


inc. tire changes, jump starts,
& lockout service.

920-983-0883

 facebook

1238 Parkview Rd. Green Bay

Family owned, providing service since 1958




•**Electrical** •**Automation**
•**Solar** •**Voice/data/video**

3154 Holmgren Way, Green Bay
(920) 338-6000
www.elandelectric.com



Ashwaubenon High School student Nelson Beams shows off the logo he designed for Ashwaubenon's Sesquicentennial. Nelson's design was chosen from numerous submittals through a high school art/design class.



ASHWAUBENON SCHOOL DISTRICT

PARTNERING WITH THE VILLAGE OF
ASHWAUBENON FOR OVER 59 YEARS TO DEVELOP
STUDENTS WHO ARE HIGH-ACHIEVING LIFELONG
LEARNERS AND CONTRIBUTING WORLD CITIZENS

3,225 STUDENTS ENROLLED	95.2% GRADUATION RATE	54% STUDENTS INVOLVED IN CO-CURRICULAR ACTIVITIES	4,000 AVERAGE DAILY MEALS SERVED
\$1.6 MILLION AVERAGE 4 YEAR SCHOLARSHIP AMOUNT AWARDED	386 FULL OR PART TIME EMPLOYEES	14 AVERAGE YEARS TEACHING EXPERIENCE IN ASD	

Our Vision is to achieve world class excellence in education so each child can reach his or her full potential.

Town of Ashwaubenon

In 1872, a group of residents living in the borough of Fort Howard, the town of Lawrence, and the village of West De Pere, petitioned the State of Wisconsin to create their own town. The state legislature officially approved the new Town of Ashwaubenon on March 16, 1872.

- The town included 5,967 acres, with boundaries on the east at the center of the Fox River, on the west by the Oneida Reservation, on the north by what is now Lombardi Avenue, and on the south near Ashwaubenon Creek.

The first town meeting was held on April 2, 1872. An election was held, and taxes were levied for township expenses..

- Voters elected a town chairman, clerk, treasurer, assessor, two supervisors, three constables, and four justices..
- One of the justices was also named overseer of highways, although in 1872, the unpaved West De Pere River Road (now Broadway) was the only public road in Ashwaubenon.

An early map of the area, drawn by a federal land commissioner in 1821, shows long, narrow strips of land extending west from the Fox River, claimed by early settlers and their descendants. A plat map from 1875 shows that many of those original properties had since been divided and sold to new residents, who had begun clearing the heavily wooded land for farming.

The Wisconsin state census from 1875 (the first that listed Ashwaubenon residents separately) shows a total town population of 385.

Five years later, the 1880 federal census gave more detailed information.

- The total population was 404.
- About 43% of all residents were foreign born. The majority were from Denmark and Norway, with others from Belgium, Holland (Netherlands), Canada, Ireland and Sweden.
- About 47% were born in Wisconsin. Most of this group were children whose parents had come to Wisconsin from the countries listed above.
- The remaining 10% were born in the U.S., as were their parents. Included in this group were the descendants of French fur traders that came to the area from New France (Canada) in the late 1700's and early 1800's.
- The primary occupation listed for adult men was farming. About 60 men, and older boys not in school, either owned farms or were working as laborers on the family farm. About two dozen men were employed as brickmakers. There were also two engineers, a gunsmith, a printer, and a minister. Women and older girls were usually listed as "keeping house."

The Town of Ashwaubenon showed steady residential and industrial growth over the next 50 years.

- Wisconsin Public Service began electric streetcar service between Green Bay and West De Pere in 1900. Mail delivery began the same year.
- Residential building lots were offered for sale in the area near Cormier School beginning in 1911.



Ashwaubenon residents celebrated the 1977 incorporation into a Village in many ways!

- Fort Howard Paper Company opened in 1919, becoming the town's major employer.
- Blesch Field on Highland (now Lombardi) Avenue became Brown County's first airport in 1919.
- South Broadway (formerly River Road) was paved in 1921.
- Wisconsin Public Service received permission to begin installing power lines on all public roads in Ashwaubenon in 1924.
- The population in 1930 was 685.

With the onset of the depression in 1930, followed by World War II, development slowed. After the war ended in 1945, and particularly during the 1960's, the town experienced rapid transformation from rural to urban. By 1972, when Ashwaubenon celebrated its centennial, many changes had taken place.

- The town's first residential zoning ordinance was adopted in 1939.
- A volunteer fire department was organized in 1942.
- The Fox River Heights Sanitary District was established in 1945 to begin providing water and sewer services.
- A new Town Hall was built on Cormier Road in 1955.
- New City Stadium (Lambeau Field) opened in 1957.
- The Brown County Veteran's Memorial Arena opened in 1958.
- The first Community Center in Klipstine Park opened in 1969.
- The population in 1950 was 1,088. By 1970, it had grown to 10,042.

The annexation of Fort Howard Paper Company to the city of Green Bay in 1969 prompted the creation of the Ashwaubenon Industrial Park in 1970. Continuing residential, commercial and industrial expansion throughout the town raised concerns of further loss of land to annexation.

To protect Ashwaubenon's borders, town leaders proposed incorporation as a village. They won approval from state planners in June of 1977, pending passage of a referendum. Ashwaubenon residents voted in favor of incorporation in August of 1977 by a margin of 3,077 to 18.



Packerland Glass Products
Everything in Glass

*“When You Think of Glass...
Think of Packerland Glass”*

**Residential
Commercial
Automotive**

Serving
Northeastern
Wisconsin
for over
50 years

2042 Holmgren Way Green Bay
499-6214
www.packerlandglass.com

WE DELIVER!



★ **ASHWAUBENON** ★ **DE PERE**
★ **BELLEVUE** ★ **HOWARD**
★ **GREEN BAY** ★ **MARINETTE**

ORDER AT JIMMYJOHNS.COM



Conversational. Warm. Curated.

hjmartin.com

Martin
and son, inc

FLOORING | SHOWER DOORS | FLOORCARE

THURSDAY, AUGUST 11TH

EPIC
EVENT CENTER

**FREE CONCERT WITH
SAM LLANAS
FORMERLY OF THE BODEANS
NO ADVANCED TICKETS NEEDED.**

TUESDAY, AUGUST 9TH



**ASHWAUBENON
NIGHT**

\$5 BOGO TICKETS

COURTESY OF  **Capital**
CREDIT UNION

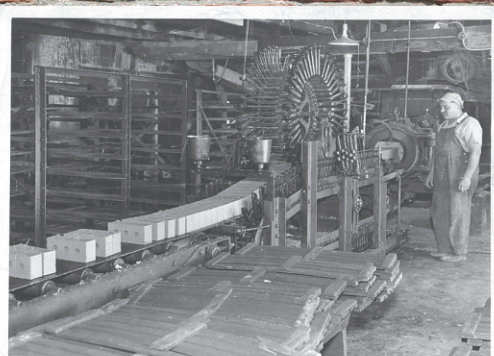
**A FREE festival BRAT
PER PERSON**

**BASEBALL BINGO TUESDAYS WITH TV GIVEAWAY
AND
PRE-GAME CONCERT BY BRIAN JAMES**

The ticket offer is good for any tickets in Sections 104-126. Purchase tickets at the SMA Ticket Office or online at greenbayrockers.com using promo code: Ashwaubencn (enter at checkout)

Ashwaubenon's Oldest Business

HOCKERS BRICK & TILE CO., INC.



*Family
owned
since 1869*

**Brick
Stone
Fireplaces**



2870 S. Broadway, Ashwaubenon
www.hockersbrick.com 920-499-0687



Some of Village Hall staff, circa 2007! Left to Right: Angie Calli, Patty Stubb, Rosemary Hermes, Amy Lueke, Bobbie Christus, Joanne Berens, Lynn Follette, Bobbie Skalecki, Pat McKeever, Barb Baeten, and Joyce Esser.

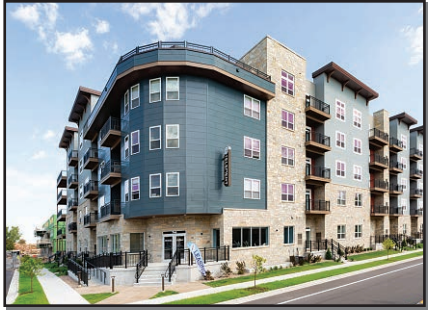


Creating a bright, sustainable future for the communities we serve

We're investing in solar, wind and battery storage to provide the affordable, reliable and clean energy you depend on. Our goal: net carbon neutral by 2050.



The Element Apartments is proud to support the Village of Ashwaubenon's Sesquicentennial



THE
ELEMENT
LIVE IN YOURS

746 Element Way, Ashwaubenon, WI

Call: 920-461-3808 • www.MyElementLiving.com

Element Residential Management LLC

162396

How Ashwaubenon Was Named

In 1795 Little Crow came to what is now Ashwaubenon from Mackinac Island in Michigan. His mother was French-Canadian, and his father was an Ottawa chief. As an interpreter for a local fur trader, Little Crow became acquainted with Menominee Chief Ahkeeneibeway (Standing Earth), and was welcomed into his family.

About two years later, a group of Menominee maidens returned from berry picking and reported that one of their group was missing. Chief Standing Earth launched a widespread search for the missing girl, and it was determined that a band of Chippewas returning from a visit to the white settlement at La Baye (Green Bay) had taken her to their encampment at Shawano Lake.

After much deliberation, a war party was organized and Little Crow was selected to lead it. They reached the Shawano Lake camp around midnight, and waited until morning when the Chippewa men would be away hunting. With the rest of the Menominee war party concealed in the forest, Little Crow went alone to search for the missing girl.

Proceeding cautiously, Little Crow searched among the lodges and wigwams and finally found the girl in a lodge being guarded by several older Chippewa women. With his tomahawk held high, he entered the lodge and motioned the girl to follow him. As they left the women gave him threatening side long looks.

Runners were sent ahead to tell that the girl had been rescued. There was a large celebration, and Chief Standing Earth gave Little Crow a new name. He would be known as As-ha-wau-bo-my, or Side Looks, in memory of the reaction of the Chippewa women at Shawano Lake.

As a further reward, As-ha-wau-bo-my was given the choice of two of the maidens of the village as his brides, but he chose only one - the youngest daughter of Chief Standing Earth, known as Wahbenukqua, or Morning Star. Her father also gave them a 3-square mile grant of land on the west bank of what is now known as the Fox River, where they built a home and raised their family. Ashwaubomay died in 1815. The land was inherited by his descendants, and later became part of Ashwaubenon.

In 1872, a group of local residents petitioned the State of Wisconsin to create their own town. Andrew Vieau Sr., a member of a pioneer fur trading family, urged that the town be named after his great-uncle, Ashwaubomay. Over the years the spelling of his name had been altered, and the new town was named Ashwaubenon.

Ashwaubomay's Burial Site

Sister Mary Bede, the daughter of Peter and Gertrude Baeten, grew up on her family's farm near Ashwaubenon Creek. The land had once been home to Ashwaubomay and his wife Wabenukqua.

In 1921, a brass plaque was to be placed on the Baeten farm at Ashwaubomay's burial site. Mary, who was 8 years old, watched as one of his descendants identified the correct location



By 1989, when a Brown County Fairgrounds renovation project was planned, the original brass plaque had disappeared. An archeologist was hired to find the burial site, and insure that it would not be disturbed. Sister Bede, then 76 years old, was able to locate the site that she remembered clearly from her childhood.

In 2014 the monument, which is located in Ashwaubomay Park, was refurbished by the village and the Ashwaubenon Historical Society.

Congratulations
Village of Ashwaubenon
Celebrating 150 Years!

Eillien's Candies has been a proud Employer of the Ashwaubenon and surrounding area for over 60 years.

 **Eillien's**®

**1301 Waube Lane
Green Bay**

**Learn more about the *Sweetest* Team in town!
Scan the code, contact us, or follow us on Facebook**

 **eillienscandiesinc • (920) 336-7549 • www.eilliens.com/careers**



*"We May Have Installed the Flooring
You Grew Up On!"*



620 Mike Mc Carthy Way
Green Bay 494-7868
www.lpmooradian.com

Celebrating 119 years of

- Flooring sales and installation
- Blinds
- Area rug sales
- Area rug cleaning and repairs

Packer City Soft Water

Concerned about your water?
WE'RE HERE TO HELP!

Servicing All Makes & Models
Residential
Commercial/Industrial

Congratulations
Ashwaubenon
on 150 Years!

(920) 336-5955

3330 Commodity Lane, Green Bay
packercitysoftwater.com



- GREEN BAY ART
- Sports Art & Memorabilia
- 920-412-0078

- FRAME OF MIND
- Custom Framing
- 920-498-2552

2129 South Oneida St, Green Bay

COME VISIT US - WE'RE LIKE A MUSEUM!

162506



NOW HIRING

TECHNICIANS

WITH SIGN-ON BONUS



MATERIAL HANDLING SOLUTIONS



EQUIPMENT

- NEW & USED FORKLIFTS
- NEW & USED AERIAL LIFTS
- NEW & USED INDUSTRIAL SWEEPER/SCRUBBERS
- NEW & USED UTILITY VEHICLES
- NEW & USED FORKLIFT ATTACHMENTS
- NEW EQUIPMENT TIRES

SERVICES

- EQUIPMENT REPAIR
- EQUIPMENT RENTALS
- EQUIPMENT PARTS
- TIRE REPLACEMENT
- OPERATOR TRAINING
- FLEET MANAGEMENT

SYSTEMS

- WAREHOUSE CONSULTING, DESIGN, & LAYOUT
- WAREHOUSE RACKING
- PICKING TECHNOLOGIES
- CONVEYOR & SORTATION
- CUSTOM AUTOMATION
- INDUSTRIAL ROBOTICS

1 (800) 2CONGER

GREEN BAY • NEENAH • WAUSAU • RICHFIELD

conger.com

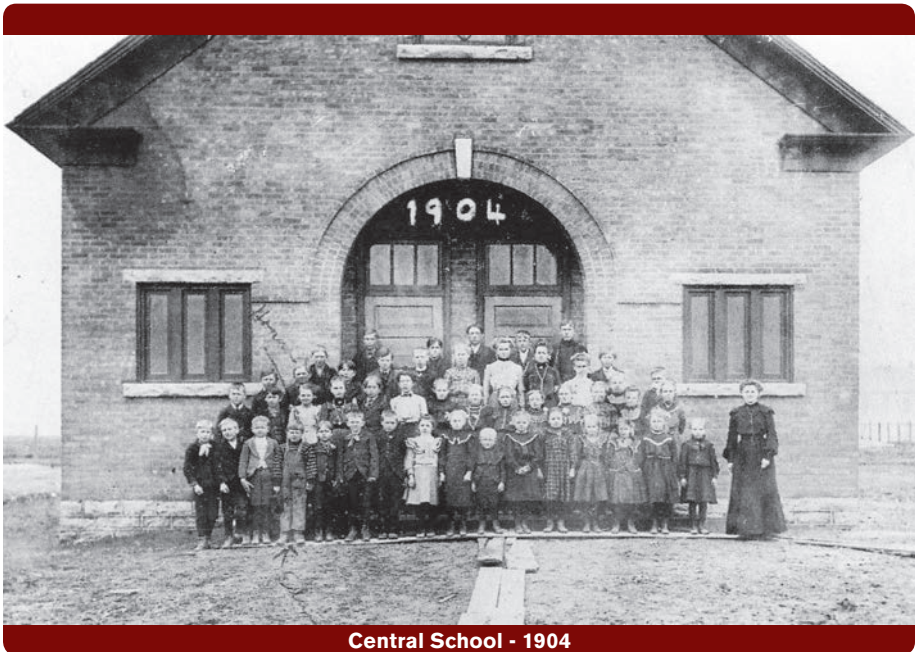
Ashwaubenon's Historic Schools

All schools in Wisconsin were privately funded until 1840, when towns and school districts were legally authorized to build and operate public schools.

- 1822** The first private school in what is now Ashwaubenon was opened at the Indian Agency house located at Ashwaubenon Creek. It was operated by an Episcopal missionary, and served the children of soldiers stationed at Fort Howard and a few local families.
- 1830** Louis Poquette operated a private school on his property near the Fox River to educate his children and those of his neighbors. Another private school building was located near the current Babcock Road.

The first Ashwaubenon public schools were authorized in May of 1872, just two months after the Town had been established by the Wisconsin State legislature. Two one-room schools, of wood frame construction, were opened later that year.

- 1872** West School was built on what is now Babcock Road. Around 1900, it was replaced by a new brick one-room building called Central School.

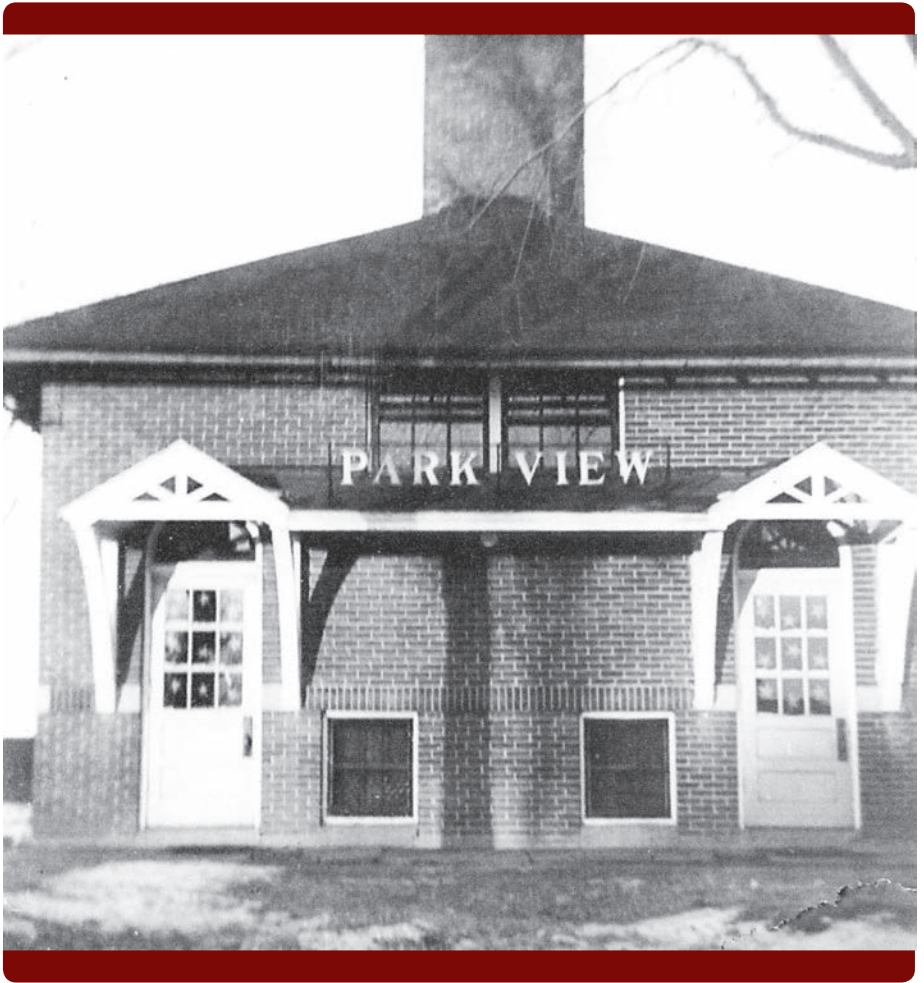


Central School - 1904

In 1931 a new one-room brick building, called Babcock School, was built on the same site. The Central School building was relocated and used as the Town Hall until 1957.

History

- 1872** East School was built on the West De Pere River Road (now Broadway), on land donated by Louis and Sophie Poquette. In 1913, it was replaced by a new one-room brick building, named Cormier School, which has been enlarged, remodeled, and updated many times, and is still in use today.
- 1921** Park View School was built at the intersection of present day Ridge and Parkview Roads. The one-room brick building closed as a grade school in 1951. It was later used for kindergarten classes, as a Brown County special education school, and a community center. It was demolished in the 1970's for the development of the Ashwaubenon industrial park.



- 1931** Babcock School was built on the site of Central School. It was named for Stephen Babcock, the UW professor who had developed the butter fat test for milk.



Babcock School was used as a one-room grade school until 1959, when all students were transferred to the expanded Cormier School. Babcock reopened in 1968 and 1969 to house kindergarten students. Both Central and Babcock schools were later demolished for the expansion of Airport Road (Highway 172).

CONGRATS ASHWAUBENON ON 150 YEARS!



Buy 1
Wrap
get 1
FREE

LIMIT 2

Valid Aug. 8-14, 2022 PLU 2621



Buy 1
Scoop
get 1
FREE

EXCLUDES WAFFLE CONES

Valid Aug. 8-14, 2022 PLU 2622



Buy 1
Cupcake
get 1
50% off

LIMIT 3

Valid Aug. 8-14, 2022 PLU 2623

Scan to
purchase
car wash
packages



STADIUM SHELL 1221 Lombardi Access Road, Green Bay

Wenz

FURNITURE & DESIGN

*We are proud to be part of the
Ashwaubenon community.*

Cheers to 150 years!



Ready for an upgrade?

We're ready to help in-store

OR *we will come to you!*



1693 Main Street, Green Bay, WI

2201 S. Oneida Street, Green Bay, WI

920-406-1800 | WenzHomeFurniture.com

Ashwaubenon Schools Today

Cormier School and Early Learning Center

- Cormier School opened in 1913 as a one-room school, and is the oldest school building in Ashwaubenon still standing at its original location.



- The Mothers' Club also began in 1913, and Cormier School became a social center for the entire community. In 1934 the Mothers Club became the PTA.
- In 1931 a second classroom was added, and two more were added in 1938. A 1956 addition included six more classrooms and a combined gymnasium and auditorium. In 1958, eight more classrooms were added.
- In the late 1950's, the two remaining one-room schools in Ashwaubenon closed, and all district students through grade 8 attended Cormier.
- In 1982 Cormier School closed, and was sold to the village for \$1.00. The building housed the Village Hall and Civic Center, and two classrooms were used for the Ashwaubenon Historical Society museum. The north wing was leased to the Cooperative Educational Service Agency (CESA) for offices. Cormier students were transferred to Valley View or Pioneer schools.
- In 1992 the school district remodeled the north wing, and reopened it for 4K and kindergarten classes. The village offices remained in the school until the new Village Hall on Gross Avenue (now Holmgren Way) opened in 1994. Cormier school was then sold back to the school district for \$1.00.
- Cormier School and Early Learning Center today houses the Pre-K and kindergarten programs.

In 1982 Cormier School closed, and was sold to the village for \$1.00.

Schools

- During the 1960's and 1970's, many Ashwaubenon farms were sold and replaced with suburban neighborhoods. Student enrollment grew from 758 in 1962 to 3,864 in 1972, which required the construction of four new schools.

Valley View Elementary School

- In 1963, Valley View School opened for kindergarten through 8th grade. It was designed to be easily expanded.
- The name, Valley View, was suggested by Thomas Slye, winner of a contest among district students to choose the name of the new school.
- The school has been remodeled and updated several times. Classrooms were added in 1965, 1968, and 2002.

Ashwaubenon High School and Junior High

- In 1960, a change in state law required that all school districts have their own high school, or join another district that had an existing high school. At that time, Ashwaubenon high school students attended school in either West De Pere or Green Bay. Residents voted to build their own high school.
- In 1965, the building opened for high school students in grades 9 and 10. Students in grades 7 and 8 from Valley View and Cormier were moved into the junior high portion of the building.
- Grade 11 was added in 1966, grade 12 in 1967, and the first graduating class was in 1968.
- In the 1972-73 school year, all sixth grade students from the district moved to the new middle school program, which replaced the junior high. A double-shift schedule had high school students attending classes in the morning, and middle school students in the afternoon.

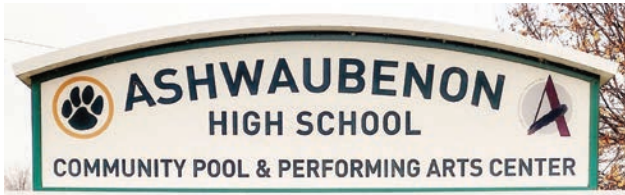
Residents voted
to build
their own
high school.

Pioneer Elementary School

- In 1969, Pioneer Elementary School opened for students in kindergarten through grade 6.
- In 2002 the school was renovated, adding additional classrooms and improving the library and lunchroom.

Parkview Middle School

- In 1973, Parkview Middle School was built adjacent to Klipstine Park. The land was sold by the village to the school district for \$1.00. The school opened in September to all district students in grades 6, 7 and 8.



Ashwaubenon High School

Ashwaubenon High School has been expanded and remodeled several times since its opening in 1965.

- A two-story addition in 1969 included classrooms, shop and art rooms and a library expansion.
- The school was expanded and updated in 2001, with new classrooms, music rooms, a new gym and locker rooms, a science wing and a new library.

2014 Referendum

In April of 2014, voters approved a unique referendum co-sponsored by the Village of Ashwaubenon and the Ashwaubenon School District. It continued the tradition of cooperation between the two entities that began when the town and the first school district were created in 1872.

The \$21 million referendum included four separate projects:

- A new community center
- A Performing Arts Center attached to the high school
- A community swimming pool
- A warm water pool

Community Facilities Committee members Ken Bukowski and Lissa Marth were instrumental in educating the voters about the project, and raising private funds for additional amenities not covered by the referendum.

Ashwaubenon Community Aquatic Center

The Aquatic Center at the high school opened in November of 2016. It replaced the pool originally built in 1965. It is available for school and community use, and includes two pools:

- The eight-lane competition pool, with two one-meter diving boards, was designed to host sectional high school swim meets. It features an ADA accessible ramp, LED scoreboard, and spectator seating for 449.
- The warm-water pool is used for younger youth swim lessons, aquatic exercise and therapy. It is also handicapped accessible.

The Aquatic Center offers swim lessons for all ages, fitness classes, open swim and pool party rentals.



Photo courtesy of Green Bay Press Gazette

The Oneida Nation

The Oneida Nation and Ashwaubenon have been neighbors for 150 years. A total of 1.71 square miles of the Oneida Nation Reservation is within the Ashwaubenon municipal boundaries, accounting for over 13% of the land within the Village

The Oneida Casino complex, located within Ashwaubenon village boundaries, is the state's premier gaming entertainment destination, bringing in thousands of visitors to the area each year.

Both Ashwaubenon and the Oneida Nation are proud of their heritage. In 1972, the Oneida Dancers performed at Ashwaubenon's Centennial, and in August of 2022, they will be a part of the opening ceremonies of Ashwaubenon's Sesquicentennial celebration.

The Oneida Nation and the Village of Ashwaubenon welcome a continued partnership for many years to come!



Photo courtesy of Oneida Nation



The Lamers trolley bringing visitors to the Oneida Complex.



“Trust Builds Relationships”

We provide complete insurance solutions for every aspect of your auto, home, boat, cycle, health, life and business needs.

(920) 330-9000



WE SERVICE ALL MAJOR BRANDS

•Residential •Commercial •Multi-Family

FREE ESTIMATES on ALL Installations



•Furnaces •Air Filtration Systems
 •Air Conditioners •Humidifiers
 •Boilers •Radiant In-Floor Heat

1396 Plane Site Blvd.
www.idealair.com

GREEN BAY AREA	CRIVITZ AREA
920 336-5551	715 854-7113









ASHWAUBENON PERFORMING ARTS CENTER

The Performing Arts Center opened in November of 2016. It replaced the auditorium that had been part of the original high school building, which opened in 1965.

It is a non-profit performance venue, which seats 736. It is funded through the village and located adjacent to the high school on South Ridge Road.

The PAC is shared by the school district and the community, and offers a schedule of regional and national touring performances, and musicals, concerts and plays by local community groups and Ashwaubenon students.



HAPPY
SESQUICENTENNIAL
CELEBRATION

150

TO THE VILLAGE OF
ASHWAUBENON!

FROM



GREEN BAY PACKAGING

Historic Churches

St. John's Lutheran Church, 2700 Babcock Road

- Ashwaubenon's oldest congregation, St. John's Norwegian Evangelical Lutheran, was formed in 1873. Services were held in homes of local Scandinavian farm families.
- The first St. John's church was built near the intersection of Babcock Road and Commanche Avenue in 1879. A bell tower was added in 1889. The bell had been used by the Oneida Episcopal Mission since 1839. Services were held exclusively in Norwegian until 1928.
- Although a windstorm destroyed the church in 1944, the bell survived. It was installed in a new concrete block church, at the corner of Babcock Road and Airport Road, in 1945.
- The current brick church was built in 1970, incorporating the 1839 bell.

Moravian Chapel, Babcock Road

- The oldest church in Ashwaubenon still standing at its original location is the Moravian Chapel.
- Thirteen families living in Ashwaubenon, who were members of the West Side Moravian Church in Ft. Howard, purchased land and constructed the chapel in 1890.

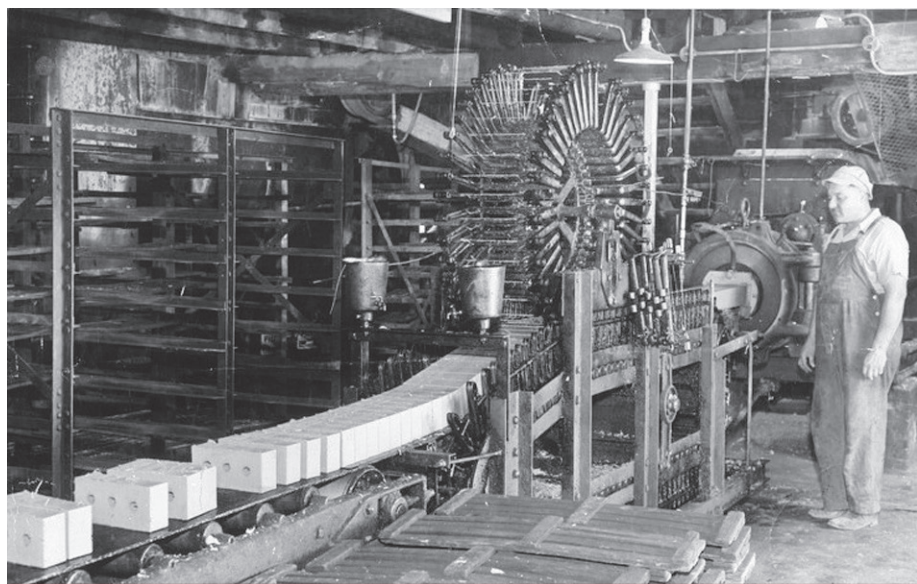
Churches Today

In addition to St. John's Lutheran, active churches in Ashwaubenon today include:

- Nativity of Our Lord Catholic Church, 2270 S. Oneida Street, was established in 1964. Services were held at the Brown County Memorial Arena until the church was dedicated in 1967.
- Bethany United Methodist Church, 1110 Echo Lane, was established in 1966, and the first service was held in the church in 1967.
- Pilgrim Congregational Church, 991 Pilgrim Way, was established and the church opened in 1969.
- Beth Haven Baptist Church, 2023 S. Ridge Road, was established in 1972.
- Restoration Church, 731 Morris Avenue, was established in 1995. It moved from Airport Drive to the former Rola Rena location in 2019.
- Elevation Church, 2605 S. Oneida Street, was organized in 2012 and moved to its present location in 2018.



Original St. John's Norwegian Evangelical Lutheran Church



Cutting bricks

Hockers Brick and Tile

The oldest business in Ashwaubenon is Hockers Brick and Tile. It is owned and operated by the 5th generation descendants of its founder, John Hockers.

John Hockers was born in Holland in 1841, and came to Wisconsin in 1868. He opened his first brickmaking business in 1869, and in 1872 acquired a brickyard on Dutchman's Creek, in the newly created Town of Ashwaubenon. The business was greatly expanded, and by 1879 was producing over two million bricks per year.

Many of the employees at the brickyard were immigrants from Holland and Belgium, whose passage to America was sponsored by John Hockers.

In 1896, Hockers Brick and Tile moved to a 47-acre site on South Broadway at Ashwaubenon Creek. When John Hockers retired in 1908, his sons and their descendants continued the business at the same location.

Brick was produced from clay at the site until 1962, when the company began offering a variety of brick and ceramic tile products from around the country. A custom sawmill was added in 1976, and a complete stone shop opened in 1982. In 2022, Hockers Brick and Tile is celebrating 150 years in business in Ashwaubenon.

John Hocker's Brick Yard,
ASHWAUBENON, BROWN COUNTY, WI

The Brick Yard is situated on Fox River, two Miles from Green Bay, and is convenient for Shipping purposes. Manufactured this year, 2,700,000.



Digging clay



Winter brick delivery

Photos courtesy of Hockers Brick and Tile

“Helping Neighbors Since 1940”



Kimps
ACE
Hardware

2548 Glendale Ave, Green Bay, WI 54313 • 920-434-1079

2110 S Ridge Road, Green Bay, WI 54303 • 920-497-6231

188788

Ashwaubenon Water & Sewer Utility

Water and sewer services in Ashwaubenon began in 1945 with the organization of the Fox River Heights Sanitary District.

- In 1948, land was purchased, the first well was drilled on Morris Avenue, and the first elevated storage tank was built. Water and sewer mains were constructed to existing streets, to serve an area of approximately 300 acres, and water meters were installed for 85 customers.
- To meet the growth of residential and commercial development in the 1950's and 1960's, three additional wells were drilled at Cormier Road, Ridge Road, and Babcock Drive. Storage tanks and standpipes were added, as well as a filter plant and an underground reservoir. Water and sewer mains were installed and began service to Phase I of the Industrial Park in 1971.
- By 1972, when the Town of Ashwaubenon celebrated its centennial, the Sanitary District's area had grown to nine square miles. It operated with a five-person utility field staff and two-person office staff, and provided over 389 million gallons of water annually for residents and businesses.

In 1977, the Sanitary District became a part of the newly-incorporated Village of Ashwaubenon, and was renamed the Water and Sewer Utility.

- In response to continued growth, three new wells were drilled at Argonne Street, Austin Straubel airport, and Fernando Drive. New elevated storage tanks were built on Marvelle Lane and Glory Road.
- Increased water usage throughout the area brought a new contaminant to the ground water – radium. The Village studied the issue for several years, and after careful consideration, signed a wholesale water agreement with the Green Bay Water Utility in 2004.
- Construction of water transmission lines and a new booster pumping station on Borvan Avenue was completed in 2006. Water from Lake Michigan started flowing to Ashwaubenon customers in June of that year.
- Three of the original wells were abandoned, and four others remain today as an emergency water source for the Village.
- The Utility still operates with a five-person field staff, a utility operations superintendent, and an office staff member who is assisted by the Green Bay Water Utility with financial operations.
- The Ashwaubenon Water and Sewer Utility today provides over 1.2 billion gallons of water annually for its customers..

Celebrating 50 years 1972 - 2022

The Ashwaubenon Historical Society was created in 1972, and became an independent non-profit in 1976. It is affiliated with the Wisconsin State Historical Society.

The Society's first museum was located in two classrooms at Cormier School from 1977 until 1996. It reopened in the remodeled former Water Department building in 1998, and moved to its present location in the former Ashwaubenon Community Center in 2016.

Exhibits at the Museum include:

- Pioneer residents and farm families
- Farmhouse and agricultural displays
- Ashwaubenon schools
- Business and residential history of the Broadway neighborhood
- Military memorabilia from Ashwaubenon residents
- Adolph Vandertie Hobo and Tramp Art collection



Farm history



Ashwaubenon schools



Hobo and Tramp Art

Village Government

The first Village election was held on October 26, 1977. Officers elected were:

- Village President - John Monfort Jr.
- Clerk - Charlotte Nelson
- Treasurer - Karen Destree
- Assessor - James Hock
- Justice - James Basten
- Constable - Joseph Nockerts



All were unopposed for the positions they had held during town government. In addition, six trustees at large were elected, from a field of 30 candidates.

Ashwaubenon today is governed by a President, Board of Trustees, and Manager.

The Village President, a part-time position, is elected at large for a term of three years. The President is the Chief Executive Officer of the Village, is a voting member of the Village Board, works closely with the Village Manager, and is Ashwaubenon's primary public spokesperson.

Seven Village Presidents have served since incorporation in 1977:

- John Monfort Jr. – 1977-1981
- Tony Frigo – 1981-1991
- Ted Pamperin – 1991-2003
- Norbert DeCleene – 2003-2007
- Gerald Menne – 2007-2009
- Michael Aubinger – 2009-2017
- Mary Kardoskee – 2017- Present

The Village Board consists of six trustees, each elected to represent two wards of the Village for a three-year term.

In 1994, as municipal government became more complex, the Village Board created the full-time, appointed position of Director of Administrative Services. In 2011, its duties were realigned, and the position was renamed Village Manager. As the Chief Administrative Officer, the Manager works with the President and Board in providing direction, guidance and supervision of department directors and staff.

- Steve Kubacki served as Director of Administrative Services from 1994 until 2011.
- Allison Swanson served as Village Manager from 2011 until 2020.

- Joel Gregozeski became Village Manager in 2020.

The Village is served by a number of departments, some dating from the creation of the Town in 1872. Others were added and redefined in later years to reflect the continued growth of Ashwaubenon.

Village Clerk

- The Village Clerk coordinates voter registration and elections, issues permits and licenses, and is custodian of all official village records. The office is also responsible for village board minutes, adopted ordinances and resolutions, and open records requests.
- In 2014, the Village Board combined the Clerk and Treasurer positions.
- A 2020 referendum changed the Clerk position from elected to appointed, and transferred Treasurer's duties to existing Finance Department staff.

Assessor

- Ashwaubenon's first Assessor was elected in 1872. It became a contracted position in 2000.
- The Assessor is responsible for the assessment of various classifications of property within the Village for tax valuation.
- An Assessment Technician employed by the village is the primary contact for the Assessor's office.



Long-time Village Clerk and Treasurer Charlotte Nelson helped transition Ashwaubenon from a Town to a Village in 1977.

Finance and IT Departments

The Finance Department is responsible for the accounting and financial reporting of all Village operations, including:

- Tax collection
- Billing and collections, accounts payable, and payroll
- Investment and cash management
- Maintenance of all Village financial records, and oversight of annual audits
- Coordination of the annual operating and capital budget process for all Village operations

The Information Technology Department supports and maintains telecommunications systems throughout Village Hall and other Village facilities. Services include data center management, network security and ongoing support and maintenance for office automation equipment.

Legal Services - Village Attorney

The Village Attorney's Office provides legal advice and opinions to the Village President, Village Board, and departments, commissions, boards and staff members.

- The office is responsible for drafting ordinances, resolutions and other board and committee documents.
- Advice and consultation is provided by the office concerning administration, liability, public record and open meeting laws, human resources, collective bargaining, and other governmental matters.
- The Village Attorney's Office also prosecutes all municipal ordinance citations, and handles numerous real estate matters including TIF projects and acquisition of property.
- The Legal Assistant in the Attorney's Office also serves as the Deputy Village Clerk

Ashwaubenon Municipal Court

The Municipal Court was established in 1979. The Municipal Court Judge is elected for a term of four years, and is required to have a law degree and live in the Village of Ashwaubenon.

- Court sessions, including initial appearances, hearings and trials, are held on Wednesday evenings.
- The Court handles all citations issued by the Ashwaubenon Public Safety Department, including traffic and local ordinance violations. It also handles citations issued by Building Inspectors for code violations, and is responsible for the collection of fines.
- Juvenile matters including truancy, disorderly conduct, drinking and drug offenses, and curfew violations are also a significant part of the Municipal Court caseloads.



Judge Wickert

Commercial Development

The first grocery store in Ashwaubenon was built by Fabian Cormier on South Broadway in 1935. A lumber company opened nearby in 1936. As new homes were built to the west, retail development followed.

- Ashwaubenon's first restaurant, the Airport Grill, opened inside the terminal at the airport in 1955, and the first motel, the Sky-Lit, was built on Ashland Avenue in 1957.
- 1962 brought the first business, a liquor store, to Ridge Road, and in 1972 the Rola-Rena roller skating rink opened on Morris Avenue.
- K-Mart, the first large retail store in Ashwaubenon, opened on Lombardi Avenue in 1970. When the store closed in 2014, the building was demolished and the land is now part of the Packers' Titletown complex.

When City Stadium (Lambeau Field) was built in 1957, Oneida Street was still farmland. The first two blocks south of Highland (Lombardi) Avenue were constructed for access to stadium parking lots and the Arena, which opened in 1958. The street had been extended to Cormier Road by 1959, and to Hansen Road by 1966. The final segment, to Waube Lane, was completed in 1974, when the new Highway 41 overpass and exit ramps opened.

While new homes were built on the west side of Oneida street, commercial development soon began on the east side.

- A heating company was the first business built on Oneida Street, in 1959. In 1962, Pleasant View Recreation Center opened, with a miniature golf course and driving range. It was located across the street from the Pleasant View residential neighborhood.
- Ashwaubenon's first bank, Fox Heights State Bank, opened in 1967. That same year, Nativity of Our Lord church opened at the corner of Oneida Street and Cormier Road. From that intersection south, both sides of Oneida Street became commercial property.
- In 1969, the first supermarket in Ashwaubenon, a Super Valu, opened on the southeast corner of Oneida Street and Morris Avenue.
- Montgomery Wards auto center opened at the northeast corner of Oneida Street and Pilgrim Way in October of 1971. The Montgomery Wards department store relocated from Green Bay in March of 1972, marking the beginning of the Bay Park Square Mall development.



Oneida at Hwy 172 in 1978

The last 50 years have brought tremendous growth, and change, to Ashwaubenon's commercial areas. Many of the original businesses have been replaced with a wide variety of new retail stores, restaurants, hotels and offices.



Beyond Legendary

Your
discovery
awaits.



Pack in the memories that will be, well,
legendary. Start your adventure at greenbay.com.

visitorinfo@greenbay.com | 920.494.9507 or 888.867.3342



greenbay.com

People Caring More

pcmcu
CREDIT UNION

Green Bay

601 Willard Dr.
Green Bay, WI 54304

Marinette

1740 Stephenson St.,
Marinette, WI 54143

PARTNERING EDUCATING INSPIRING
EXPERIENCE THE CREDIT UNION DIFFERENCE!

Get More with PCMCU!

Visit Us Online Today at

www.pcmcu.org

PDQ Car Wash

is thankful to be a part of this community,
as we celebrate 35 years as your local,
family-owned car wash in Ashwaubenon!



2701 South Oneida Street | www.pdqcarwash.com



Broadway
AUTOMOTIVE
Better!



BUICK



GMC



Shop Thousands of Vehicles. All in One Place, Anytime.

BroadwayAutomotive.com



You Can Train *HERE* for a *GREAT* New Career!

There is an increasing need for airline pilots. It is one of the most ambitious, respected, and well-paying careers, with opportunities in both the public and private sectors.

- *Complete Training in half the time of a degree*
- *FAA Approved Courses*
- *Degree Options Available*
- *Partial Financing Options Available*
- *Proven history of graduates working in aviation careers*
- *Internship & Employment Opportunities*



Pilotsmith, Inc.

1921 Airport Dr. • Green Bay 920-415-2FLY (2359)
www.pilotsmith.com

Congratulations Ashwaubenon on your 150th Anniversary!

Al Crispigna's

SAMMY'S

PIZZA & ITALIAN RESTAURANT

"A Family Tradition Since 1958"

159623



Parks, Recreation & Forestry Department

Although no public parks existed at the time, early one-room schools in Ashwaubenon did have playgrounds. Park View grade school also had a baseball diamond, and Babcock School had a skating rink.

The Ashwaubenon Park Commission was established in April of 1948. The first park owned and operated by the town was on Morris Avenue near Broadway, where playground equipment was installed in the 1950's. As residential development moved westward, new parks were added. Today there are 20 parks of various sizes located throughout the village.

- The largest, Ashwaubomay, was developed in 1973 on 84 acres adjacent to the Fox River and Ashwaubenon Creek. It was upgraded in 1999 to a four diamond baseball complex, and also features a swimming lake, four open-air shelters, two soccer fields, a playground, horseshoe pits and walking trails. The park has been the site of the Ashwaubenon Blast since 2015, and in August of 2022 will become the new home of northeast Wisconsin's Artstreet festival.
- Two of the most unique parks are Sherwood Forest and Hidden Valley, both created in 1993. The names were chosen from 300 entries in a naming contest sponsored by the Parks department. Both parks have trails that wind through wooded land that has never been cleared for development.
- The Parks Department also maintains many smaller neighborhood parks, and almost 10 miles of walking and biking trails outside of the parks.

- The 50-acre Ashwaubenon Sports Complex was developed beginning in 1999, and today includes adult softball fields, basketball courts, soccer fields, tennis courts, a skateboard park, playground, picnic tables and open-air shelters. The independently operated non-profit Cornerstone Community Ice Center offers skating instruction, and hockey leagues, camps and tournaments.

The Parks, Recreation and Forestry Department office is located at the Ashwaubenon Community Center, which opened in 2016.

Rental facilities available at the Community Center include:

- A small group meeting room, with a kitchen and TV, seats up to 70 people.
- A large multi-use room includes a full-service kitchen and bar area if needed. It includes two ceiling-mounted projectors with dropdown screens, and an outdoor wrap-around patio with a firepit. It seats up to 248 people, and can be divided for smaller groups.

The Department distributes a semi-annual Recreation and Village Services handbook to all residents, outlining the wide variety of classes, activities and events offered for children and adults.

- Seven parks are staffed for area youth on a drop-in basis.
- Ashwaubomay Lake welcomes over 23,000 summer visitors each season.
- Senior citizen programming has increased greatly, with guidance from the Senior Citizen Advisory Committee, which was formed in 2008.



- The department organizes the Ashwaubenon Blast, food truck rallies, and works with other organizations to host regional programs, events and competitions at Ashwaubomay Park and other locations.
- A unique partnership has been established between the Village and School District, which provides tax savings for Ashwaubenon residents. Off-site athletic field maintenance and school district snow plowing are done by the Village, in return for community pool and PAC maintenance and facility usage for Parks Department programming.



Village Parks, Recreation & Forestry Department staff at Village Hall ready to officiate on Halloween!



pepsi

Pepsi-Cola of
Green Bay
congratulates
the Village of
Ashwaubenon
on it's
150th
year anniversary!

163291



The water tower is a familiar skyline site at Lois Aubinger Park.

Forestry Department

Ashwaubenon first received a Tree City USA designation from the National Arbor Day Foundation in 1992. The award is given to communities that effectively manage their public tree resources.

A full-time Village Forester was hired in 1998, and the neighborhood street tree planting program began in 1999. The department is also responsible for:

- Maintenance of all trees in parks and public spaces
- Arboretums in Hidden Valley and Sherwood Forest parks
- Community gardens at Bill Diamond Park
- Adopt A Garden and Adopt A Park programs
- Tree and Bench Donation program

The Forestry department is also overseeing the removal of over 1,000 remaining ash trees on Village owned property due to the effects of the emerald ash borer.



Ashwaubenon is proud to be home of the Brown County Veteran's Memorial, located in front of the Resch Expo Center.

Serving All of Northeast Wisconsin For Over 30 Years

RICHARD'S
HEATING • COOLING INC.

- Licensed
- Bonded
- Insured

**Free
Estimates
on
installations**

- Forced air systems
- A/C for hot water heated homes
- Air Purifiers
- Maintenance Programs
- Humidifiers

**24 Hour
Service**

We service all
brands and types
of equipment

- Residential
- New Construction
- Light Commercial

www.richardsheatingcooling.com
920-336-0431 1211 Flightway Dr. De Pere



Photos courtesy of Titletown

Titletown

In its 150 year history, Ashwaubenon changed from woodland to farmland, which was then replaced by suburban residential, industrial, commercial and retail areas. In 2015, the Green Bay Packers announced plans for a unique mixed-use urban development - the Titletown district.

Set on 45 acres along the south side of Lombardi Avenue, just west of Lambeau Field, the Titletown community includes residential, retail, and business facilities, surrounding a public park space.

- The first businesses to open in Titletown were the Lodge Kohler Hotel, the Bellin Health Sports Medicine Clinic, and the Hinterland Brewery.
- Titletown Tech, which encourages innovation and business development in northeast Wisconsin, opened in 2019. It is a partnership between the Green Bay Packers and the Microsoft Corporation.





- The U.S. Venture Center office building, on Marlee Lane at the west end of Titledtown, opened in 2021.

Titledtown Townhomes became available for sale in 2020, and Titledtown Flats rental apartments welcomed their first tenants in 2021.

The park space in the center of Titledtown offers multiple year-round recreational opportunities for children and adults.

- Ariens Hill offers snow tubing during the winter. The park also includes a full-size football field, game courts, and a playground.
- The plaza, on Ridge Road opposite the stadium, offers tables and chairs for relaxing, and activities for children. It becomes an ice skating rink in colder months.
- Weekly night markets during the summer feature local vendors and bands, and game day activities are held during the football season.
- The park has regularly scheduled fitness classes, multicultural dance and music events, and interactive art and craft opportunities.
- Five restaurants within the Titledtown district offer a variety of dining options.

Join Culvers in Celebrating Ashwaubenon's Sesquicentennial August 8-14



\$1.50
single
scoop
cake
cones &
dishes



\$1.50
Sodas

**Not valid with any other offer, coupon or discount. Valid only at:*

Culvers of Ashwaubenon
909 Hansen Rd. Green Bay
(920) 405-0735

Culver's[®]

CULVERS.COM

© 2020 Culver Franchising System, LLC
Limited time offer. At participating Culver's restaurants. 8/20

Sports in Ashwaubenon

Long before City Stadium (now Lambeau Field) was built on Highland Avenue (now Lombardi Avenue) in 1957, sports was a major passtime in Ashwaubenon. In the 1870's, one of the most popular was horse racing.

In 1874, James Cormier Sr. built a half-mile race track on his property on the Fox River, just north of the present day Railroad Museum.

- The property, known as Cormier Park, hosted both saddle horse races and harness racing, which often featured professional sulky drivers.



- In 1879, James Cormier helped to organize and raise funds for the first Brown County Fair, which was held at Cormier Park in October of that year.

Cormier Park was also a popular site for baseball games.

- Local teams from Green Bay, Fort Howard, and De Pere played opponents from around northeast Wisconsin. Spectators often arrived by steamboat at the park's dock from downtown Green Bay. Round trip fare was 15 cents.
- In 1876, the Oneida Tribe played an exhibition game of LaCrosse at Cormier Park. Also appearing was the Oneida brass band.
- In 1885, a traveling all-girl baseball team arrived in Green Bay to play the Grays, a local semi-professional men's team. The game was moved to Cormier Park in Ashwaubenon because a Green Bay law prohibited the playing of baseball on Sundays. The Grays won, 9 - 7.

The popularity of baseball and other sports has continued to grow. Parks and indoor facilities have been added, expanded and improved many times in Ashwaubenon's 150 year history..

In 2019, Capital Credit Union Park was built on Holmgren Way, next to the Village Hall. It is home to the Green Bay Rockers baseball team. With a seating capacity of 3,300, the stadium can also be used for soccer games and outdoor concerts.



Diamond #4 at Ashwaubomay Park

**Congratulations Ashwaubenon
on your 150th Anniversary!**

**We are pleased to be a small part
of the history of this great place.**

COLD COMFORT SMART MOVES



NORTHLAND
COLD STORAGE, INC.

2490 S. Broadway, Green Bay, WI 54304

(920) 431-4600 • www.ncold.com

193356

Volunteer Fire Department

Ashwaubenon residents voted to establish the town's first Volunteer Fire Department in May, 1942. A budget of \$3,000 was approved to purchase a truck and equipment, and to build a fire-proof garage on an easement granted by the Menominee Sugar Company.

- The Department began with ten members, and was incorporated in 1943. The fire truck could pump water from its own 500-gallon storage tank, or from a nearby water source. A distinctive whistle using the sugar beet plant's steam line sounded alarms.
- In 1955, a new town hall and fire station opened on Cormier Road. The department had 18 members and an annual budget of \$1,369.03, with just \$5.25 spent on fuel and oil.
- A second station was opened on Ponderosa Avenue in 1970, with a department total of 34 firefighters.

Ashwaubenon Rescue Squad

In 1973, five Ashwaubenon citizens incorporated a rescue squad to provide emergency medical services to Town residents exclusively. It was funded by donations until 1974, when it became a Town of Ashwaubenon department, and was allocated a budget of \$9,261 toward operating expenses.

- In 1974, the Rescue Squad had 14 volunteer members, men and women, who provided primary emergency medical care to the town on a 24-hour basis.
- Full-time Emergency Medical Technicians John Konopacki, Pat McKeever and Steve Cox were hired in 1977, and the department had grown to 29 members. The squads were housed at Station No. 2 on Ponderosa Avenue.
- In 1978, six members of the Rescue Squad attended specialized training, becoming certified paramedics.
- After the Fire Department and Rescue Squad were combined into one department in 1979, there was growing support for Ashwaubenon to form its own Police Department.
- After six months of study, the village board voted unanimously in February, 1980 to implement a Public Safety Department, combining police, fire, and rescue services to the community.



Department of Public Safety

The first 24-hour tour of duty for the new Department of Public Safety began on August 4, 1980. Brown County continued to provide support for the Village under the existing contract until August of 1981, when Ashwaubenon was ready to stand “On Our Own” with 22 full-time officers and a dispatch center.

- By 1990, the department included 30 sworn officers and three investigators. The dispatch center had six telecommunicators, with one supervisor who also served as court clerk.
- As the department grew in manpower and equipment, new community programs were developed for residents, including Neighborhood Watch groups, Fire Prevention and Explorer programs, the annual Bicycle Safety Rodeo, and the Ashwaubenon Public Safety Benevolent Organization.
- In 1995, the Department moved into the new Village Hall and Public Safety building on Holmgren Way, and a School Liaison Officer position was added.
- 2001 brought new challenges to the Public Safety Department. A plane crash in April required the department to be on scene for over 30 hours handling fires, chemical leaks, and assisting the NTSB with its investigation. Just two weeks after the 9/11 attacks, the department worked with Green Bay and Brown County to provide the highest level of security at the Monday night game at Lambeau Field.
- In 2004, the Village became a primary presidential campaign stop, requiring all members of the department to work security, medical and fire details.
- Ashwaubenon fire services became part of the MABAS mutual aid organization. It includes 17 fire departments and a private ambulance service within Brown County, which operate on a common radio frequency and can work together seamlessly on any emergency scene.
- The Public Safety Department Communications Center merged with Brown County in 2010.
- Ashwaubenon’s first K-9 unit was established in 2014. A two-year old German Shepard named Ole, and his handler, received extensive specialized training in New Mexico before beginning patrol duties. Ole is utilized by the Public Safety Department and other agencies for narcotic detection, officer safety, and public education programs.
- A Facility Therapy Dog Program was established between the Village, the Ashwaubenon School District, and the department’s School Resource Officers in 2020. Therapy dog Force knows over 40 commands, and can detect when people are experiencing anxiety, anger, or stress. She helps students with emotional and behavioral issues, and helps to build positive interactions and relationships with officers.
- In March of 2021, with the help of a \$200,000 donation from the Green Bay Packers, the department acquired 51 body cameras, 20 tasers, squad cams and equipment for digital storage.

The Public Safety Department presently includes 51 sworn officers and 11 civilian support personnel.

- Ashwaubenon is one of only about a dozen communities nationwide whose officers have certification in law enforcement, firefighting, and emergency medical services. Many are also licensed paramedics. The cross-training of all first-responders not only saves time, and lives, but is also a cost savings for the community.
- In addition, 20 paid on-call fire and rescue members are trained and perform firefighting and emergency medical duties at the same level as full-time members of the department. Activated by pager, they operate two engine companies and a rescue squad based at the Ponderosa Avenue station.

Several programs operated by the Public Safety Department offer the public an opportunity to learn about the daily duties and responsibilities of its officers.

- The Ashwaubenon Public Safety Cadet program is designed to prepare young adults ages 14 to 21 for careers in public safety. Cadets meet twice a month for instruction by various officers, scenario training, and field experience. They are tested at state and national competitions, and also provide service to the community.
- The Citizens' Academy was started in 1997. The Academy is offered once a year, and lasts for ten weeks. Classes are taught by Public Safety officers and include a wide variety of topics, including Department history, traffic accidents, gangs, court, defense and arrest tactics, drug impaired driving, firearms, D.A.R.E., school liaison, crime prevention, emergency medical and fire operations, investigations, and telecommunications.
- Graduates of the Citizens' Academy are invited to join the Volunteers in Police Service (VIPS), founded in 1998. The VIPS assist the department at special events including the Bike Safety Rodeo, Cellcom marathon, and Packer games, and raise funds for the K-9 program and non-budgeted equipment.
- Ashwaubenon Public Safety was the first department in the nation to offer an advanced Citizens' Academy Program. Past graduates are invited to attend a six-week refresher course to learn about changes in the department.



1997 was the 1st graduating class of the Ashwaubenon Citizen's Academy.



Public Safety Director John Konopacki (L) and APS officer Tom Rolling (R), present a "DARE" award to Van Driesse Lincoln Mercury.

Volunteers

Volunteers and service organizations have been an important part of the community of Ashwaubenon for over a hundred years.

- In 1913, the first Mothers' Club was organized at Cormier school. Club members held public card parties and socials to raise funds for a small kitchen in the school's basement, and paid for the wiring and light fixtures when electricity was installed. The Mothers' Club later became the PTA.
- In 1921, when the construction of Park View grade school, at the corner of Ridge and Parkview Roads, was approved, nearby farmers volunteered to dig the basement. Funds were raised to buy a piano for the school, and to purchase an additional acre of land for a baseball diamond.
- In 1931, when Cormier school was enlarged to two rooms, the PTA raised funds for new playground equipment, lights and curtains for the stage, and a new kitchen. PTA members also made clothes for the children of Mexican migrant workers who worked in the sugar beet fields.
- In 1941, after the Pearl Harbor attack, Cormier students gave up candy and gum at school until the end of World War II, and instead began contributing their pennies to buy United States defense savings stamps. Other rural schools joined the effort. Each Cormier student was also responsible for collecting 100 pounds of paper, to be sold for the purchase of a defense bond in the school's name.

Volunteers continue to make significant contributions to life in Ashwaubenon today.

- Ashwaubenon residents serve on a number of Village advisory boards and committees, and volunteer their time for events sponsored by the Parks and Recreation, Public Safety, and other departments.
- Senior citizens volunteer their time helping students and teachers in the schools, and Ashwaubenon high school students complete at least 24 hours of school-approved community service before graduating.
- Several organizations work with the Ashwaubenon school district to provide volunteers for activities, and funding for items not included in the budget.
- Many Ashwaubenon service organizations and businesses support and promote school and youth activities, offer scholarships, sponsor special events, and provide volunteer hours and financial support for food pantries, homeless shelters, animal welfare, veterans services, and a wide range of other community programs in Ashwaubenon and throughout the area.



Ashwaubenon Public Safety vehicles



Public Works & Engineering Departments

Ashwaubenon's first street department was created in 1956, and began taking over maintenance of about 25 miles of Town roads from the County. The department was also responsible for garbage pickup, which had begun in 1955. All equipment was rented until 1962, when a street department garage was built on Cormier Road.

In 1972, when Ashwaubenon celebrated its centennial, the department had 13 full-time employees, and was responsible for 88 miles of roads within the Town. As the street department's responsibilities grew, it became the Public Works Department. Municipal construction engineering and geographic information system (GIS) services began in the 1990's, and storm water utility management was added in 2012.

The Public Works Department today provides a wide variety of both seasonal and year-round services to the community, including:

- Spring yard waste collection
- Summer roadway maintenance and repairs
- Fall leaf pickup
- Winter snow clearing and removal
- Garbage, recycling and large rubbish collection
- Sidewalk maintenance

The Public Works Department helps with the construction of Parks and Recreation projects, and the maintenance of the Village Hall and other Village facilities. It also assists Public Safety with traffic control operations for major events within the Village.

The Department today maintains over 100 miles of road within the Village with a crew of 15 full-time employees. A Public Works operations superintendent manages the day-to-day activities, and a three-mechanic team maintains all Village-owned vehicles and equipment.

A team of two engineers and one engineering/GIS technician oversee municipal construction within the Village, and provide engineering services to other departments as needed.

Community Development Department

The Community Development Department was created in 2016, as a successor to the first Zoning and Plan Commission established in 1948. The Department is responsible for:

- Coordination of site plan reviews
- Long-range comprehensive planning
- Economic development coordination
- Zoning code administration and enforcement
- Building inspections and code enforcement



Kelley Photo Services

Brown County Veterans Memorial Arena

The Veterans Memorial Arena opened in November of 1958. It had seating for 5,250 spectators for a variety of sports events, major musical concerts and road shows, and hosted trade shows and special events.

- A collection of artifacts displayed at the Arena marked the beginning of the Packers Hall of Fame.
- Apollo 16 Astronauts John Young, Charles Duke and Thomas Mattingly held a question and answer session for school children at the Arena, as part of their visit for Ashwaubenon's Centennial celebration in 1972.
- In 1976, An addition to the building, dedicated by President Gerald Ford, became the Hall of Fame's home until it moved to the Lambeau Field Atrium in 2003.
- The Brown County Expo Centre was built in 1986, with over 43,000 square feet of exhibit space for trade shows, conventions, seminars and banquets. It was renamed Shopko Hall in 1999.



Hank Lefebvre Photo

Resch Center and Expo

The Resch Center was added to the Veterans Memorial Complex in January of 2002. It features seating for 10,200 fans for concerts, shows and sports events, including:

- Wisconsin State girls volleyball and basketball tournaments
- UW Green Bay Phoenix men's basketball games
- Green Bay Gamblers hockey games
- Green Bay Blizzard football games



Resch Center

In May of 2019, the Arena and Shopko Hall were demolished to make way for the Resch Expo, which opened adjacent to the Resch Center in 2021. They are part of the Veteran's Memorial Complex.

- The Expo has 125,000 feet of exhibit space available for trade shows and large meetings. The space can be used as one large hall, or divided into two or three spaces. Six additional suites on the second floor are available for smaller events.



Resch Expo

Brown County Airport

The first Brown County airport was located at the corner of Highland (Lombardi) Avenue and Ashland Avenue, which was also Highway 41.

- It was known as Blesch Field, named for the property owner who donated use of the land, free of charge, for airport purposes in 1928.
- The runway, which was unpaved, and a hangar were built by the non-profit Brown County Airport corporation.

The anticipated arrival of the first Northwest Airways air mail plane, on December 15, 1928, drew over 3,000 spectators. Delayed by fog, the plane arrived several hours late, and was met by the postmaster and a smaller, but enthusiastic crowd in spite of wet and muddy conditions on the field and nearby roads.

- The airport was leased by the County Park Commission from the Blesch estate in 1931. The Park Commission purchased the land in 1933.
- It was maintained by the Highway Commission, which used sand to level the runway. Some planes were equipped with skis for landing on snow.
- Daily air mail planes arrived from Milwaukee, with stops at Fond du Lac, Oshkosh and Appleton. Larger planes carried mail and up to 16 passengers.

Air mail service to the airport was ended by the federal government on August 1, 1933. Private planes continued to use the field, but commercial mail and passenger service did not return until the new Austin Straubel Airport opened in 1948.



© Neville Public Museum of Brown County

Austin Straubel Airport

Brown County's current airport opened in 1948, and was named for Lt. Colonel Austin Straubel, the first Brown County pilot killed in action during World War II.

- Wisconsin Central Airlines, which was founded in Clintonville in 1944, began three daily flights on October 1, 1948, using 9-passenger planes.
- Larger, 21-passenger planes were added in 1951, and in 1952 the company became North Central Airlines. It was the airport's major carrier until 1986, when it was merged with Northwest Airlines.

The airport today occupies more than 2,000 acres of land in Ashwaubenon and on the Oneida Nation Reservation. It includes two runways, and the terminal built in 1965.

- The airport terminal offers three restaurants and three retail stores, a game room and other amenities for travelers.
- In the fall of 2021, the PawsAero therapy dog program began, with four dogs trained to help passengers with anxiety about flying.
- Austin Straubel Airport is one of only two commercial airports in Wisconsin authorized for international flight arrivals by the U.S. Customs and Border Protection.
- In March of 2022, it became the first airport in the world to receive an award for its responsible management of water runoff, both on land used for airport operations, and on vacant airport land leased to farmers.



Ashwaubenon Industrial Park

In January of 1970, the Town Board formed a committee to look into the creation of an industrial park. Representatives from a variety of local businesses, working with the railroad, state highway department, and Town officials, began the extensive development process. Farm owners were contacted, and thirteen agreed to sell part or all of their land for the park.

In March of 1971, a master plan for the park was presented. It included 638 acres, which would be developed in phases.

- A street plan of the park was drawn, bounded by Ridge Road, Waube Lane, Park View Road, and Gross Avenue (Holmgren Way).
- The plan included a layout of proposed rail lines, and access ramps from the new location of Highway 41, which was under construction at the time, and the proposed Allouez-Ashwaubenon bridge, which would open in 1975.
- All parcels of land within the park would be rezoned to heavy industry, and land use controls would regulate setbacks and building elevations.

The first lot in Phase I was sold in July of 1971, and a warehouse built on the property was leased to the Industrial Park's first tenant in October.

- Ten years later, more than 70 businesses had moved into the park. It has been expanded several times, with streets and utilities being added, extended or reconstructed as needed.
- In 1997, the new Ashwaubenon Business Park was added at the southwest corner of the Village, through a land use plan agreement between Ashwaubenon, Hobart and Lawrence.



One of Green Bay Packaging's storage facilities located in the Industrial Park.



Ashwaubenon's "Entertainment District" continues to grow with new housing and businesses. Shown above is one of the residential buildings in "The Element" complex.

**Not a corporation
but a community.**

When we serve together with local entrepreneurs, leaders, & families, **great things happen.**

Nicolet
NATIONAL BANK

NicoletBank.com | 920.406.7080

National Railroad Museum

**2285 S. Broadway
Ashwaubenon, WI 54304
(920) 437-7623
nationalrrmuseum.org**

**GO TO THE
PACKER GAMES!**

- Tickets - End Zone to 50 Yard
- Buying Game Tickets for Top \$\$\$
- Game Packages with Hotels - Home & Road
- Tailgate Parties
- Large Groups Welcome
- Luxurious Club Seats



Unforgettable Fan Experiences
(920) 722-5377 | EventUSA.com



The Community Development Department played an integral role in the creation of "Capital Credit Union Park – Home of the "Rockers"!"

Local photographer serving
Northeast Wisconsin.
We provide professional
portrait photography for:

- Seniors • Families
- Children • Sports Leagues

**Ambrosius
Studios**

Call for to make an appointment • 920-494-2294
ambrosiusstudios.com

1827431

Congrats
Village of Ashwaubenon!
on your

150 YEAR ANNIVERSARY

1872-2022

FINCANTIERI
MARINE GROUP

155905

The Future



Bellin Health

Bellin's Ashwaubenon Ambulatory Surgery Center is a five-story, 262,000 square-foot facility being constructed at 933 Waube Lane (Located on the former Menard's site). Construction of this building began in the spring of 2022 and is anticipated for completion in February 2024.

This facility will have eight operating rooms and room for up to four more as future growth dictates. Its first floor will house the expansion of Bellin Health's Orthopedics department, including a state-of-the-art joint replacement clinic and rheumatology clinic, as well as physical, occupational, and speech therapy. In addition, the clinic will have a full complement of diagnostic imaging services to assist in continually improving access for patients. The second floor will be dedicated to surgical services, including pre-surgical prep, operating rooms, and recovery. The facility is expected to house some 450 providers and staff members once fully operational.

Bellin Health will also build a new pediatric and adolescent specialty care clinic on land near the corner of Wisconsin 172 and Ashland Avenue in the village of Ashwaubenon.

The Bohemian Park

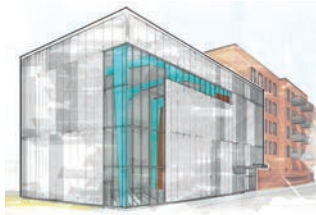
The Bohemian Park is a mixed-used development located at the southwest corner of Holmgren Way and Morris Avenue. The second building is under construction and features four stories, 52 units of residential apartments with retail, and commercial space on the ground floor.



The Common Place

The Common Place is a five-story mixed-use building with commercial space on the first floor and four stories of apartments above. In addition, Odyssey Climbing Company will be

opening a four-story indoor climbing gymnasium adjacent to The Common Place.



Your New Ashwaubenon Agent!
Christina Lindauer
State Farm Insurance Agent



173315

2337 S Ridge Rd Ste A
Green Bay, WI 54304

Business: 920-494-0111

Christina@ChristinaLindauer.com

www.ChristinaLindauer.com



Congratulations
Village of
Ashwaubenon
on your
150th
Celebration!



173422


WISNESKI
Auto Sales



Used Vehicles
Starting From \$3,995

*Many To Choose From All Fully
Inspected With A Warranty Included*

2688 Packerland Dr., Green Bay, WI 54313

920-544-5065

wisneskiautos.com

162488

**Congratulations
Ashwaubenon!**

from





**CONGRATULATIONS
ASHWAUBENON
ON 150 YEARS!**

865 Lombardi Avenue | Green Bay , Wisconsin 54304
(920) 405-8700 | fax: (920) 405-1997 | www.tundralodge.com



All Are Welcome!

Mass Times

Saturday 5:00 PM

Sunday 8:30 AM and 10:15 AM

Tuesday-Friday 8:00 AM

Confession: 4:00 PM Saturday
and by Appointment

Our Parish Office Hours

8:00 AM-4:00 PM Monday-Thursday

8:00 AM-12:00 PM on Fridays

www.nativitydisciples.org

**Enjoy a Car Buying
Experience
Like No Other!**

Rav 4



Camry

Tacoma



LEMIEUX ...the best! 
TOYOTA

2550 South Oneida Green Bay 496-2200
www.lemieuxtoyota.com

Congratulations!



Village of Ashwaubenon



CARD & COIN

COLLECTIBLES EST. 1992

2208 S. Ridge Rd. #102, Green Bay
920-498-0050 • packercityantiques.com

Parker John's BBQ & PIZZA

smokin' good ribs, wings & pizza



**NEW
OUTDOOR
PATIO!**



View Menu



2851 S. ONEIDA ST.

DINE IN - CARRY OUT - DELIVERY - CATERING

CONGRATULATIONS ASHWAUBENON!



AutoSelect

REPAIR • SERVICE • TIRES

You're good to go!

Two Green Bay
Locations

WEST

2045 S. Oneida St.
920-494-4936

EAST

2128 Main St.
920-465-3790

162372

PRSR STD
U.S. POSTAGE
PAID
STEVENS POINT, WI
PERMIT NO. 44
POSTAL CUSTOMER
ECRWSS

Happy
150TH

ASHWAUBENON



GREEN BAY **GRB**
AUSTIN STRAUBEL
INTERNATIONAL AIRPORT