

ASHWAUBENON

Recreation & Village Services

SPRING & SUMMER 2024

APPLICATIONS NOW
BEING ACCEPTED
for Summer & Fall Part-Time
Recreation Jobs!



ashwaubenon.gov

900 Anderson Drive, Ashwaubenon, WI 54304 • 920.492.2331



ASHWAUBENON PARKS, RECREATION & FORESTRY DEPARTMENT

900 Anderson Drive
Ashwaubenon, WI 54304
ashwaubenon.gov
492-2331

STAFF

Rex Mehlberg
Director
rmehlberg@ashwaubenon.gov
David Roehrig
Recreation Program Supervisor
droehrig@ashwaubenon.gov

Melody Escoto
Aquatic Coordinator
mesco@ashwaubenon.gov

Tim Bauknecht
Forester
tbauknecht@ashwaubenon.gov

Kelly Baenen
Administrative Assistant
kbaenen@ashwaubenon.gov

Dan DeBauche
Parks Foreman

Steve Eichinger
Parks Maintenance

Matt Poirier
Parks Maintenance

Senior Citizens Coordinator
seniors@ashwaubenon.gov

OFFICE HOURS

Monday-Thursday
7:30 a.m.- 4:30 p.m.
Friday
7:30 a.m.-11:00 a.m.

High School Pool: 492-2993
Ashwaubomay Lake: 336-3430
Parks, Recreation & Forestry
Department: 492-2331

INDEX & STAFF LISTING



ACTIVE ADULTS OPPORTUNITIES

Beach Day	17
Brain Health	16
Breakfast w/ the Experts	17
Book Club	19
Card Camp	16
Card Making with Janice	16
Coast To Coast on A Tandem	15
Conversational Ukulele	15
Donuts & Documentaries	19
Embroidery Club	19
Fitness Classes	21,22
Geocaching 101	16
Hand & Foot Card Club	15
Hand, Knee, & Foot	15
Ice Cream Social	17
Kayak Tour	20
Knitting Club	19
Line Dancing Club	19
Lunch & Learn	18
Meals on Wheels	6
Movie Matinee	19
Pickleball	22
Rockers Game	18
55+/Senior Citizen Day	17
Senior Safety Update	15
Senior Stretch & Balance	15
Seniors 4 Seniors	15
Sewing Club	19
Studio For Artists	19
Vietnam: A Look Back	17
Walking Club	20
Wellness Workshops w/ Courtney	18

ADULT PROGRAMS

Active Adults	20
Barre/Yoga Strong Fusion	21
Bean Bag Leagues	22
Card Making	16
Cedarburg	
Strawberry Festival	22
Deep Stretch w/ Kate	20
Fit & Fabulous	21
Fit & Flexy w/ Kate	20
Fun Run Group	22
Kayak Tour	20
Milwaukee Brewers Trip	22
Pickleball	22
Za' Jammin Mashup	21

AQUATICS

Aquatic Registration	
Information	35

PARK BOARD MEMBERS

Mark Castonia
Deborah Lundberg
Chris Zirbel
Heidi Murphy
Donovan Miller
Tracy Flucke
A. Dean Hess

Aqua Boot Camp	34
Ashwaubomay Lake	36, 37
Deep Water Exercise	34
Jr. Lifeguards	35
Lake Rental	37
Lake Season Pass Info	36
Lap Swim	32
Levels of Swim Description	31
Open Swim	32
Open Swim Fit Training	34
Pool Rentals	33
Private Lessons	32
Swim Lessons	32, 35
Therapeutic Core & More	34
Water Exercise Classes	34

FALL PROGRAMS

Punt, Pass & Kick Contest	30
Rookie Football Camp	30
Tots Football Camp	30
Youth Flag Football Leagues	30

MISCELLANEOUS

Auxiliary Aids	3
Ashwaubenon Arts Council	9
Ashwaubenon Performing	
Arts Center	9
CORP Meetings	6
Community Garden	22
Co-Sponsored Organizations	51
Director's Desk	3
Facility	
Reservations	3, 4, 5, 33, 37
Map of Parks	39
Park Info	38
Recreation Scholarship	
Program	3
Registration	
Information	3, 35, 50
Sponsorships/	
Partnerships/Donations	38
TDS Fiber	42
Volunteering in Schools	14
WPRA Tickets	6

PARKS & FORESTRY

Adopt A Garden/	
Park Programs	43
Arbor Day	42
Bench Donations	42
EAB	40, 41
Oak Wilt	43
Street Tree Planting	42
Tree Donation Program	38

YOUTH & TEEN PROGRAMS

Easter Egg Hunt	25
Intro to Kayaking	27
Intro to Sailing	27
Intro to Volleyball	27
Little Ninjas	23
Summer Day Camp	26
Summer Lunch Program	25
Summer Park Playgrounds	24
Tae Kwon Do	23
Tennis	26

SPECIAL EVENTS

Artstreet	7
Ashwaubenon Blast	8
Ashwaubomay Park	
Clean-Up Project	14
Bike to School Day	44
Christmas in July	36
Corcl Time	37
Doggie Dip	37
Easter Egg Hunt	25
Food Truck Rally	10, 11
Father's Day Swim	36
Fiesta On The Beach	36
History in the Park	7
Movie in the Park	29
Neighborhood Special Events	28
Rummage Sale	14
Sand Castle Contest	37
Science Rules	24
Show at Shmay	36
Spish Splash	
End of Summer Bash	36
Summer Concerts	12, 13
Water Olympics	24

TOT PROGRAMS

Easter Egg Hunt	25
Rookie Basketball	26
Rookie Soccer Camp	23
Rookie T-Ball	23
Sports 101	27
Tot Dance	27

VILLAGE SERVICES

Clerks Office	45
Pubic Safety	48, 49
Street	
Department	44, 45, 46, 47

Find us on
Facebook



GIFT CERTIFICATES AVAILABLE

The Ashwaubenon Parks, Recreation & Forestry Department has gift certificates available. The gift certificate can be used as payment towards any of our instructional programs and can be purchased for any dollar amount. To purchase a gift certificate, stop by the department office.

GENERAL INFORMATION

RECREATION SCHOLARSHIP PROGRAM

The Parks, Recreation & Forestry Department, with the assistance of the Ashwaubenon Lions have a limited amount of resources set aside to grant scholarships for children to participate in recreational activities. Scholarships are granted according to the free or reduced price school lunch program. For further information please contact the Parks & Recreation Department.

ARE YOU A RESIDENT?

A resident for registration purposes is anyone who lives within the Village of Ashwaubenon. Any person residing outside of the Village boundaries will be considered a non-resident and will pay their fair share through an additional surcharge established by the Park Board.

AUXILIARY AIDS

Auxiliary aids for disabled persons wishing to attend or participate in the Village of Ashwaubenon's Recreation Programs are available upon request at least 96 hours in advance of the events. If a notice of less than 96 hours is received, the Village will make every attempt to provide the aids, however, this may not be possible with such short notice.

RENTING OUR FACILITIES

The Ashwaubenon Parks, Recreation & Forestry Department has facilities that may be rented throughout the year for various events. Some facilities are for Ashwaubenon based businesses and property owners ONLY and some are available to both residents and non-residents.

What events our facilities are available for:

- Baby/Bridal Shower
- Family Reunions
- Picnics
- Retirement Party
- Birthday Party
- Wedding Reception

What events our facilities cannot be rented for:

- Fundraising Events (Park Board approval required)
- Non-Ashwaubenon based organizations not directly serving Village residents
- For-profit sales events

The individual renting the facility and receiving the contract for the rented facility MUST be in attendance the day of the rental as they are the individual who will be held responsible for the facility.

Ashwaubenon businesses renting our facilities for meetings or events will be required to submit a certificate of insurance with the Village of Ashwaubenon listed as an additional insured.

FROM THE DIRECTOR'S DESK...

To the Thawing Wind
Come with rain, O loud Southwester!
Bring the singer, bring the nester;
Give the buried flower a dream;
Make the settled snowbank steam;
Find the brown beneath the white;
But whate'er you do tonight,
Bathe my window, make it flow;...

An excerpt by Robert Frost

Spring brings upon our Department a PLETHORA of projects and program for 2024! Hopefully our spring and summer sun will be bright and warm!

- Waterford Park will be getting new playground equipment installed this summer. The Waterford Park community top vote getter was the design from Midwest Playscapes.
- The Ashwaubomay River Trail bridge and viewing plaza area will have a ribbon cutting ceremony by early summer. Watch our Facebook page for the date!
- Planning continues for the next phase of the Ashwaubomay River Trail, which will go from the current trailhead (north end of the Lake parking lot), behind Ashwaubomay Lake to the southern fence-line, and then around to the former boat launch area.
- Park design is happening for a new "mini-park" being planned on Element Way. The park will help serve our residents living in that area's housing developments.
- Design is occurring for a future addition to the W. Main Avenue Trail. Also, the Industrial Park Trail is scheduled to be reconstructed with new asphalt after almost 25 years of use (time flies) !
- Our Wednesday lunch concert series at Klipstine continues, as does our food truck rally series at Ashwaubomay Park. Don't miss the great food and entertainment at these continually growing events!
- Our Department will be updating it's Comprehensive Outdoor Recreation Plan (CORP) again in 2024. This plan is updated every 5 years, which involves feedback from YOU, on what amenities and improvements you would like to see in the Ashwaubenon park system. See page 6 for further information. Your feedback is what helps prioritize projects and funding during budget time!
- Forestry is finally seeing the light at the end of the tunnel, in terms of Village removal of ash trees from the emerald ash borer infestation. The final "management zone" removals of our ash street trees will be done this year. Moving forward will be pockets of removals in some additional parks and conservancy areas. Once the management zone removals are complete, we will focus on replanting street trees to replenish our neighborhood tree canopies.
- Don't miss the "SHOW AT SCHMAY"...a fun outdoor movie event at Ashwaubomay Lake featuring "The Little Mermaid" on Saturday, June 22nd! Time will be at 1 p.m. on the big mobile screen!

From our staff to you...we truly wish all of you a safe, warm and FUN summer!

Registration for programs begins: APRIL 1: FOR RESIDENTS • APRIL 8: FOR NON-RESIDENTS

Unless notified by our Department, you will automatically receive your first choice.
If you would like confirmation of your registration, please provide an email address.

RENTAL FACILITIES

FACILITY RESERVATIONS

Residents may book the Community Center up to 3 years in advance while non-residents may book up to 3 months in advance. All other reservations, including picnic shelters, will begin the first Monday in November for the following year. Reservations are made on a first come, first served basis. A 5.5% sales tax will be added to all rentals.

RESIDENT ONLY FACILITIES

CORMIER GYM, 2280 S. BROADWAY

Basketball rentals \$25 per hour resident
(2 hour minimum)

RESIDENT/NON-RESIDENT FACILITIES

Park rentals are available from 6:00 a.m. until 10:00 p.m.

ASHWAUBOMAY PARK, 2881 S. BROADWAY

NON-RESIDENTS MONDAY - FRIDAY ONLY!

- Shelter #1 & #2 (open) \$40 resident
 \$55 non-resident
Portable toilets located adjacent to shelters
Shelter 2 has 8 tables, a group grill, and a serving table.
- Shelter #4 (open) \$75 resident
 \$90 non-resident
12 tables, electricity, lights, drinking fountain & restrooms

ASHWAUBENON SPORTS COMPLEX, 1680 FERNANDO

Open Shelter \$75 resident
 \$90 non-resident
Electricity, drinking fountain, & restrooms

NOTE: jumpers, inflatables, dunk tanks, amusement rides, etc. are NOT allowed in the park areas without written permission from the Parks, Recreation & Forestry Department.



ASHWAUBENON SPORTS COMPLEX

BECOME A FAN

of Ashwaubenon Parks, Recreation and Forestry
Department on Facebook. Stay informed of
special events, cancellations and more!



SHELTER #4 - ASHWAUBOMAY PARK



SHELTER #4 - ASHWAUBOMAY PARK



ASHWAUBOMAY #1



ASHWAUBOMAY #2

RENTAL FACILITIES

ASHWAUBENON COMMUNITY CENTER

900 Anderson Dr.

The Ashwaubenon Community Center is available 7 days a week from 6:00 a.m. - 10:00 p.m. Ashwaubenon residents can rent until midnight on Friday & Saturday. Residents may book up to 3 years in advance while Non-Residents may book up to 3 months in advance.

The Ken & Marge Bukowski Activity Room seats 50-70 depending on the type of event. Rentals are a minimum

of 4 hours or 2 hours for business meetings. Rental includes a galley kitchen, tables, chairs, large TV and DVD player. Deposit is required.

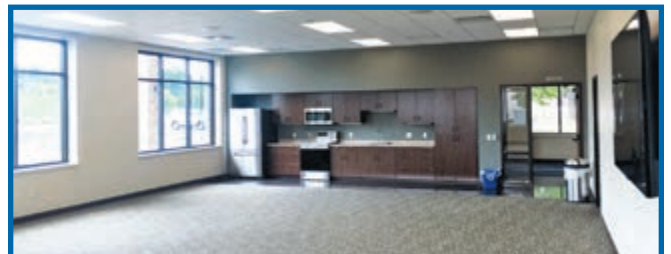
The Green Bay Packers Grand Park Room with the divider in place seats up to 170. Rentals are a minimum of 4 hours or 2 hours for business meetings. Rental includes a full commercial grade kitchen, bar, tables, chairs, fire pit and patio. Deposit is required

The full Green Bay Packers Grand Park Room seats up to 248. Rentals are a minimum of 4 hours or 2 hours for business meetings. Rental includes a full commercial grade kitchen, bar, tables, chairs, fire pit and patio. Deposit is required.

*Visit ashwaubenon.gov for room sizes and layouts and a 360 degree video tour.



				REFUNDABLE DEPOSITS		WEEKDAY BUSINESS MEETINGS	
ROOMS	RESIDENT RENTAL RATE 1ST 4 HOURS	NON-RESIDENT RENTAL RATE 1ST 4 HOURS	ADDITIONAL HOURLY RATE	RESIDENT	NON-RESIDENT	RESIDENT	NON-RESIDENT
BUKOWSKI (ACTIVITY) ROOM	\$160.00	\$310.00	\$40.00	\$200.00	\$500.00	\$40.00 per hour	\$75.00 per hour
GREEN BAY PACKERS GRAND PARK ROOM/EAST	\$250.00	\$500.00	\$62.50	\$500.00	\$1,000.00	\$62.50 per hour	\$110.00 per hour
GREEN BAY PACKERS GRAND PARK ROOM/FULL	\$280.00	\$530.00	\$70.00	\$500.00	\$1,000.00	\$70.00 per hour	\$125.00 per hour



GENERAL INFO



MEALS ON WHEELS PROGRAM

The Ashwaubenon Parks, Recreation & Forestry Department is partnering with the Aging & Disability Resource Center of Brown County (ADRC) to recruit and train additional volunteers to deliver home bound meals through their Meals on Wheels Program.

Individuals or organizations interested in receiving more information on how to become a volunteer for this Ashwaubenon home bound meal route should call the Ashwaubenon Recreation Department at (920)492-2331. Both training and mileage reimbursement are

provided through the Aging & Disability Resource Center of Brown County.

Delivery volunteers & subs are needed. Please call 492-2331.

Ashwaubenon residents can register for the Meals on Wheels Program by calling the Aging & Disability Resource Center of Brown County at (920) 448-4312. Meals will be available to individuals who:

- are 60+ years of age (adults who are under age 60 may qualify)
- are home-bound and not driving

- are not able to prepare meals for themselves,

Please call the Aging & Disability Resource Center to discuss eligibility and your specific situation.

The Home Bound Meal Program is designed to meet at least one third of the Recommended Daily Allowance for adults age 60 or older. Meals are delivered between 11:00 a.m. and 12:30 p.m. - Monday thru Friday - and are available on a suggested donation basis of \$4.00 per meal.



2024 WPRA SUMMER TICKETS

We are once again selling discounted tickets April 30th until September 6th to many of Wisconsin's go to destinations. Stop by our office to get the full details and pricing. A 3% fee will be added to the price if paying by credit card for these tickets. Discounted attractions include: Milwaukee County Zoo, Mt. Olympus Theme & Water Park, Noah's Ark, Pirate's Cove Adventure Golf, and Wisconsin Ducks Tour.

COMPREHENSIVE OUTDOOR RECREATION PLAN

The Village will need to update its' Park Plan (called the "Comprehensive Outdoor Recreation Plan", or "CORP") in 2024.

Last updated in 2019, many ideas for neighborhood park projects completed in the last 5-6 years came out of these meetings. Projects such as the Ashwaubomay River Trail bridge, the Sherwood Forest Trail addition, the Ashwaubenon Sports Complex Trail addition, the Main Avenue Trail extension, and additional sunshades at Ashwaubomay Lake.

Again...these ideas came from YOU! After your ideas and discussion points were given, our Park Board continued discussion and ranked potential projects which have been considered in the last 5 budget cycles. What amenities would you like to see in our parks or in the Village, interns of Parks & Recreation?

A series of park meetings/discussions have been scheduled to collect your feedback.

Here are the dates:

Aubinger Park: Wednesday, July 10 under the shelter at 6 p.m.

Fort Howard Park: Tuesday July 16 under the shelter at 6 p.m., as part of our Neighborhood Event

Canterbury Park: Wednesday, July 17 under the shelter at 6 p.m.

6 Village of Ashwaubenon  ashwaubenon.gov

Ashwaubomay Park: Thursday, July 18 at 6 p.m. as part of our Food Truck Rally

Smith Park: Tuesday, July 23 under the shelter at 6 p.m. as part of our Neighborhood Event

Waterford Park: Tuesday, July 30 under the shelter at 6 p.m. as part of our Neighborhood Event

Sand Acres: Tuesday, August 6 under the shelter at 6 p.m. as part of our Neighborhood Event and National Night Out.

We have tried to spread these out at various parks. They usually don't last too long! Suggestions may be given for ANY neighborhood or park facility at ANY of the meetings. Just because a meeting is at a specific park, does not limit comments for just that park/neighborhood.

In addition, we will take suggestions at the September 17 Park Board meeting at Ashwaubenon Village Hall. Time TBD...but likely between a 5:30 - 7 p.m. start time. And...there is an option of filling out an on-line form (available June - August on our website). Go to Ashwaubenon.gov Click on Government/Departments/Parks & Recreation...and the link will be on the page.

So...let yourself be heard for what recreational amenities you would like to see in Ashwaubenon. We hope to see you there!

COMMUNITY EVENTS

ASHWAUBENON HISTORY IN THE PARK *HISTORY OF LIVING AND DECEASED INDIVIDUALS*

ONE NIGHT ONLY Thursday, June 20, 2024 - 6:00 p.m.

Ashwaubenon Community Center Grand Park Room • 930 Anderson Dr.

Admission: \$10.00 Per Person

Registration is appreciated, pay at the door • Call Janet at (920) 336-9519

Refreshments Available

Co-Sponsored by:

Ashwaubenon Historical Society Inc., Ryan Funeral Home,
and Ashwaubenon Parks & Recreation

Video: Compliments of Den & Lin Persick

All proceeds go to benefit the Ashwaubenon Historical Society

ART STREET

For over 40 years, Art Street has been bringing art out of studios, galleries and museums, throughout Wisconsin and the country. In one weekend, stroll the festival at our exciting new location, Ashwaubomay Park, and encounter the original works of hundred's of artists, numerous acts on our community and main stages and savor an array of specialty foods. Enjoy cultural displays. Engage in hands-on family activities. Listen to the sounds of laughter, nature, and song.



**FINE ART | MUSIC | FOOD
FAMILY FUN!!!**

Presented by:



info@mosaicartsinc.org
www.mosaicartsinc.org

COMMUNITY EVENTS



Ashwaubenon Blast and Family Fun-ath-alon

- » Concessions **ON-SITE ALL DAY!**
- » Food, soft drinks, beer and water available
- » Plenty of picnic tables!
- » Free Car Show 8am-3pm!
- » \$5 wristbands for unlimited games, bounce houses, balloon animals and face painting
- » Balloon Animals from 2-5 p.m.
- » Face painting from 4-7 p.m.
- » Kiddie Carnival games w/ prizes from 2:30-6:30 p.m.
- » ... And more!!! **WOW!**



SATURDAY, AUGUST 10th

Time: 8 a.m.-10 p.m.

Location: Ashwaubomay

Ages: All ages



SCHEDULE OF EVENTS

8:00 a.m.-3:00 p.m.

Car Show

11:00 a.m.-2:00 p.m.

BAND TBD

11:00 a.m.-6:00 p.m.

Free Swimming at
Ashwaubomay Lake

2:30-6:30 p.m.

Kiddie Carnival and
Bounce Houses*

2:00 p.m.-5:00 p.m.

Balloon Animals*

3:00 p.m.-6:00 p.m.

The Cougars

4:00 p.m.-7:00 p.m.

Face Painting*

6:30 p.m.-9:30 p.m.

The Glam Band

*wristband required

Back by popular demand and bigger and better than ever. The 8th Annual Ashwaubenon Blast is back again to wrap up a summer of fun. The Village, Ashwaubenon Alumni Association and area sponsors are teaming up again to bring you the **BIGGEST COMMUNITY EVENT OF THE YEAR!** Come celebrate at Ashwaubomay Park with neighbors friends, family and past Ashwaubenon Graduates. Everyone is welcome! This is the summer event you won't want to miss!



GENERAL INFO



ASHWAUBENON PERFORMING ARTS CENTER



2391 South Ridge Road

The Ashwaubenon Performing Arts Center (PAC) is a beautiful 730-seat venue located one mile south of Lambeau Field, at 2391 South Ridge Road.

This state-of-the-art performance space was built for the artistic and theatrical enrichment of the students and community members of the Village of Ashwaubenon and surrounding areas. The PAC serves as home to school and community musicals, plays, concerts, and theatre programs and also actively presents regional, national, and international touring entertainment.

Visit ashwaubenonpac.org for more details and to see our schedule of upcoming shows!

Schedule of Events

HS Choir Concert for a Cause

April 4 - 7:00 PM

Brass Differential & Copper Box

April 5 - 7:30 PM

Sponsored by Alliance Insurance Centers
Part of the Kroll's West Regional Series

Ashwaubenon School District Art Show

April 9-11, 3:30-6:30 PM

Alive Again: A Tribute to Chicago

April 13 - 7:30 PM

Sponsored by Ken & Marge Bukowski
Part of the Kroll's West Regional Series

AVB Community Band

April 15 - 7:00 PM

Grammy Award-Winning Mads Tolling & The Mads Men

April 18 - 7:30 PM

Sponsored by Green Bay Packaging
| George Kress Foundation

An Evening with John McGivern

April 26 - 7:30 PM

Sponsored by KHROME

Vibe Dance

April 28

Forever Dance Company

May 4, 5

Parkview Band Concerts

May 6 - 6:00 PM

Parkview Choir Concerts

May 7 - 6:00 PM

Barb's Centre for Dance & Ballet 360

May 11 - 1:00 PM & 6:30 PM

May 12 - 11:00 AM & 4:00 PM

AVB Community Band

May 13 - 7:00 PM

NEW Fusion Dance & Performing Arts

May 18 - 11:00 AM & 3:30 PM

May 19 - 11:00 AM & 3:30 PM

AHS Band Pops/Theme Concert

May 21 - 7:00 PM

AHS Art Show

May 21, 22, 23 - 3:30 PM-6:30 PM

AHS Choir Pops Concert

May 23 - 7:00 PM

All That Dance

May 31 & June 1

A CALL FOR "ART" - MINDED PEOPLE!

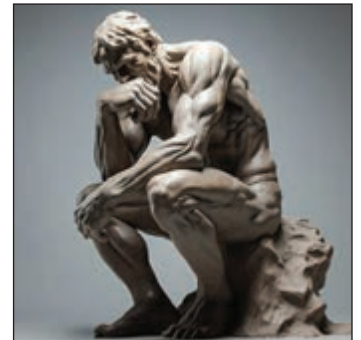
Love the Arts? As an artist... or just enjoy them? We may have a role for you! As part of the Village of Ashwaubenon's Strategic Plan, art plays a role in making our community a great place to live and visit.

The Village is looking to form an "Ashwaubenon Arts Council"/Advisory Committee to develop art ideas; create "calls for artists" to submit ideas/work; and make recommendations to our Village Board for art projects and public placement in our community.

We're just starting off on this endeavor, so we'd love to hear if you would be willing to consider getting in on the ground floor of this committee. We're looking for art minded people, either as an artist, teacher, student or art aficionado (someone who just appreciates art) who feels like they could contribute ideas and help guide us in giving the Arts in Ashwaubenon a more prominent focus.

What kind of art you say? Think statues, murals, lighting, ...art has so many meanings to so many people!

If what you're hearing interests you, give us a call to further discuss! Again...this is our first grass roots effort to put something together, so we're taking names and will see how this progresses! Don't be shy! Contact Rex Mehlberg, Director of Parks, Recreation & Forestry, at (920) 492-2331 to hear about some of our initial thoughts on the committee and how you can be involved!



COMMUNITY EVENTS

A FOOD A-FARE



**MAY 16 • JUNE 20
JULY 18
SEPTEMBER 12**

**FOOD TRUCK RALLY
4:30-8:30 PM**

A series of 4 Food Truck Rallies will be hosted by the Village of Ashwaubenon Parks & Recreation Department this summer. Each rally will be incorporated with a special event.

- Multiple Food Vendors On-site selling food from 4:30-8:30 pm
- Beverage area selling soda, water, domestic and craft beer. Volunteers provided By Fortifi Bank.
- Ashwaubomay Lake will have extended hours for June & July rallies staying open until 8pm.
- Dozens of picnic tables for patrons to sit and enjoy their meals.
- Watch our Facebook pages for a food truck "lineup" as the dates get closer!

Sponsored By:



Fortifi Bank



Anticipated food vendors for 2024.

Vendors will vary by date.

LaTacoyota	Bay Area Burger Co.
Maldonado's	The Wandering Table
Gourmet Corn	In Yeero Dreams
The Dog House	Ice Clouds
The Dough Shoppe	Minzo's Kitchen
Caribbean Cruiser	Blue Suede Foods
Legendary Gyro's	Rusty's BBQ
Osorio's Latin Fusion	Travelin Tom's Coffee
Philly's & York	4 Schmitt's & Giggles
Chilled	



The June and July dates

will be held in conjunction with
Ashwaubomay Lake special events!

JUNE: FIESTA ON THE BEACH

JULY: CHRISTMAS IN JULY

**Ashwaubomay Lake
will be open until 8 p.m.
on food truck rally nights!
Reduced admission
after 5 p.m.**

**See page 36
for further
information on
Lake events.**

COMMUNITY EVENTS



PLENTY OF SEATING AVAILABLE

**May 16 - Big Mouth & the
Power Tool Horns**

June 20 - Grupo Kn Zavor
(Latin Rhythm & Salsa)

July 18 - Nashville Pipeline

**September 12 - That 90's
Band**

DOG FRIENDLY

All of our food truck rallies are now dog friendly. Bring your furry family members to enjoy all the fun!



SUMMER CONCERTS



2024

ASHWAUBENON PARKS, RECREATION & FORESTRY

CONCERTS IN THE PARK SERIES

at Klipstine Park 900 Anderson Drive



A FREE lunchtime concert series!!!

- Enjoy music, lunch, and visit with friends and family.
- 11:30 - 2 p.m. Wednesdays, June 12 - July 31
- Concessions available on site, provided by area community organizations.
- Picnic tables available or bring a lawn chair and blanket.
- Rain site for all concerts will be located in the Ashwaubenon Community Center.
- For more information, call Parks & Recreation at (920) 492-2331.

Events Held In Conjunction with Concerts In The Park:

- | | |
|-------------------|---|
| June 26* | Food Drive Bring a non-perishable food item for "Stocked Shelves" pantry @ St. John Lutheran Church. |
| July 17** | Senior Citizen Day Ashwaubenon Seniors eat for \$3. Proof of Ashwaubenon residency required. |
| July 31*** | Ice Cream Social Day Sundaes for only \$1...served by the Senior Citizen Advisory Committee! |

SUMMER CONCERTS



2024 SUMMER LINE-UP



June 12

The Del Rays (50's/60's Rock & Roll)

Sponsor: AnSer Services



June 19

Music Jar Band (Cover Band... All Genres)

Sponsor: US Bank



June 26

Paul Evansen (Neil Diamond-"Truly Diamond" Show Tribute)

Sponsor: Green Bay Moose Lodge 801



July 10

Talk of the Town

Sponsor: Ashwaubenon Lions Club



July 17

Let Me Be Frank Productions

Sponsor: Woodside Senior Communities



July 24

Daddy D Productions

Sponsor: Ashwaubenon Business Association



July 31

ROCKER!

Sponsor: Pepsi-Cola of Green Bay

**If you do business with
our sponsors,
please let them know
your appreciation
in making this series possible!**



Contributing Sponsor

COMMUNITY EVENTS

ASHWAUBENON VILLAGE-WIDE RUMMAGE SALE

Interested in reducing some clutter around the house and make money at the same time?!

SIGN UP FOR THE 2024 VILLAGE-WIDE RUMMAGE SALE

Rummage sales will be held rain or shine on **Friday, April 26th & Saturday, April 27th**, from 8 a.m. - 3 p.m.

For the low cost of \$6.00, your rummage sale will be included on a map with location indicated and a short description of items at your sale. You will also receive a number, which corresponds with our map and a "rummage sale" yard sign which you can place to advertise your sale.

Don't delay, start thinking about it today! Sign-up for this event has a deadline of **Friday, March 29, 2024** to ensure you are included on the map!!



Pick up a form at the Ashwaubenon Parks, Recreation & Forestry Department located on 900 Anderson Drive and send along with a check to the address on the form.

OR Visit Ashwaubenon Village web site and download PDF form which you can either print and mail or attach PDF to email and send to droehrig@ashwaubenon.gov

OR If you have questions, email them to: parks@ashwaubenon.gov or you may call the Ashwaubenon Parks, Recreation & Forestry office at 492-2331.

THE GREAT ASHWAUBOMAY PARK CLEAN-UP PROJECT

The 15th annual community work day at Ashwaubomay Park is scheduled for **Saturday, June 22, 2024**. We are seeking community members, park users, service organizations and scouting groups to help improve Ashwaubomay Park for all visitors. Last year volunteers cleared buckthorn and honeysuckle along Ashwaubomay Creek at our park entrance.

Please bring your hand pruners, pole saws, and loppers (no power tools please) to help remove these invasive species and other brush that have taken over the Fox River riverfront. Our work day will begin at 9:00 a.m. and run until 11:30 a.m. when we will have a BBQ hot dog lunch awaiting beneath a picnic shelter, followed by free lake admission! We'll be meeting by the Ashwaubomay Lake shelter area.

Interested in helping ... GREAT!!! It is recommended that work gloves, long sleeve T-shirts and long pants be worn for safety purposes.

Give us a call at 492-2331 to get on the volunteer list.



VOLUNTEERING IN THE SCHOOLS

The Ashwaubenon School District invites all citizens to consider volunteering in the schools. There are a variety of volunteer opportunities at Cormier, Valley View, Pioneer, Parkview and the High School.

Volunteers can serve as classroom helpers, assisting teachers with reading activities, math facts, spelling review and serve as test and computer supervisors. In addition, the district is looking for citizens willing to periodically read to classes and to help with special projects. Serving as a mentor or guest speaker and sharing information about careers, travel, hobbies and life experiences are still another way in which citizens can be utilized.

Volunteer opportunities are available for once a week, monthly, or on an "as needed" basis. Commitments are generally for an hour or two in a variety of time slots. Volunteer activities are flexible to accommodate citizens who travel or go south for the winter.

Assignments will begin in September. A complete list of volunteer opportunities will be listed and continually updated on the school district website at www.ashwaubenonk12.wi.org/volunteeringcln. Anyone interested should contact, Coordinator of Volunteers, Kathy O'Brien at (920) 360-4033 or kobrien@ashwaubenonk12.org or call the school district office at 492-2900.



ACTIVE OLDER ADULTS



SENIORS 4 SENIORS

Come check out our new social group Seniors 4 Seniors. This is a group that connects Seniors with resources while tracking their concerns and planning for changes in their lives. A gathering of Seniors from all over the community to discuss issues or concerns in their lives.

Date: 4TH WEDNESDAY OF EVERY MONTH

Time: 1:00 pm - 3:00 pm

Location: Ashwaubenon Community Center

Fee: Free

HAND & FOOT CARD CLUB

Come join our fun and Hand and Foot Club on the 1st and 3rd Tuesday of each month. This club is free to join and a fun, welcoming group. This group meets at the Ashwaubenon Community Center from 11:30am-1:30pm. If you are interested in joining please reach out to Nancy at nabogacz@netnet.net. We have a cap of 24 players and need an even amount of players so please reach out to join.

Date: 1ST & 3RD TUESDAY OF EVERY MONTH

Time: 11:30 a.m.-1:30 p.m.

Location: Ashwaubenon Community Center

Fee: Free

HAND, KNEE, & FOOT

Come join in the fun with our Hand, Knee, and Foot Club. We have a group that meets every other week at the Ashwaubenon Community Center to get together and enjoy this fun game. This group is free to join!!! Call us at 920-492-2331 for more details.

Date: 2nd & 4th Monday of Each Month

Time: 1:00 p.m.-4:00 p.m.

Location: Ashwaubenon Community Center

Fee: Free

SENIOR SAFETY UPDATE IN BROWN COUNTY

A presentation by Brown County Deputy Bryanne Gawlik, on the start to finish approach of calling for assistance from Police, Fire, or Medical Professionals. What you need to know on local updates on public safety, scams, as well as simple self-defense tips and tricks.

PRE-REGISTER BY FRIDAY, MAY 24

Date: THURSDAY, MAY 30

Time: 9 a.m.

Location: Ashwaubenon Community Center

Fee: Free

COAST TO COAST ON A TANDEM

Join the Ashwaubenon Community Center's Book Club for a special Authors' Event, Wednesday, April 10th at 1pm. Tracy and Peter Flucke authors of Coast to Coast on a Tandem will discuss their adventures not only on a bicycle built for two riding around the country, but there adventure writing their and publishing their book. Copies of the book will be available for purchase.

PRE-REGISTER BY APRIL 5, 2024

Date: WEDNESDAY, APRIL 10

Time: 1:00 p.m.

Location: Ashwaubenon Community Center

Cost: FREE

CONVERSATIONAL UKULELE

The Ukulele is one of the simplest stringed instruments one can learn to play! It is a joyful happy instrument that can be as simple or as complex as you wish. Join our expert teacher Betsy every week as we build skills and learn new songs. The goal is fun, fun, fun!

EVERY THURSDAY

Time: 1:00 p.m.

Location: Ashwaubenon Community Center

Cost: \$5 per month



SENIOR STRETCH & BALANCE

Senior Stretch & Balance-move your body through seated and standing yoga poses with chair support offered designed to increase flexibility, balance and range of motion. There is no floorwork with this class. Senior Stretch & Balance will be led by certified instructor Faye Nedobek.

THURSDAYS

SESSION 1: APRIL 11-MAY 2

SESSION 2: MAY 9-MAY 30

SESSION 3: JUNE 6-JUNE 27

SESSION 4: JULY 11-AUGUST 1

SESSION 5: AUGUST 8-AUGUST 29

Time: 9:35 a.m.-10:20 a.m.

Location: Ashwaubenon Community Center

Fee: \$16 resident;
\$31 non-resident



ACTIVE OLDER ADULTS



BRAIN HEALTH

“Care Partner’s Journey w/Dr. Lulloff”

WEDNESDAY, APRIL 17

If you’re looking for inspiration and life-changing lessons, you won’t want to miss his talk, “A Care Partner’s Journey.” With powerful insights and valuable tips, this event will leave you feeling motivated and empowered. Join us for an unforgettable experience and discover the incredible impact of Dr. Lulloff’s story.

Sleeping Through the Ages”

WEDNESDAY, MAY 29

Sleep is an important part of your daily routine — in fact you spend about one-third of your life doing it! Quality sleep — and getting enough of it at the right times — is as essential to survival as food and water. Without sleep you can’t form or maintain the pathways in your brain that let you learn, create new memories, concentrate and respond quickly. Sleep also plays a key housekeeping role that removes toxins in your brain that build up while you are awake. This presentation will highlight the importance of restorative sleep and how to set up a sleep routine to gain maximum sleep benefits - at all ages!

Technology Use & the Negative Impacts On Our Brain”

WEDNESDAY, JUNE 12

Technology use can actually cause structural changes in the brain. Pings, alerts, rings, and notifications can shift our focus in a way that can lead to long lasting difficulties with paying attention. Difficulties paying attention can lead to poorer performance on academic, personal, and professional tasks.

“Food Is Medicine”

WEDNESDAY, AUGUST 21

Our brain’s constant supply of fuel comes from the foods we eat. Emerging research from the fields of neuroscience and nutrition shows that by changing what you eat, you can improve your mental and emotional well-being. You can stabilize your moods. You can improve your focus. You can even make your brain grow. Join us to learn how food affects the structure and function of your brain.

Presenter: Brain Center of Green Bay

Time: 10:00 a.m.-11:00 a.m.

Location: Ashwaubenon Community Center

Cost: Free

Pre-register by Friday before each class

CARD CAMP

If you enjoy card making with rubber stamps, then this class is for you. Michelle and Connie will be leading this class to help you perfect your cards. You will rotate stations to make 4 awesome cards (3 general and 1 holiday. Please bring your own scissors. All other supplies provided. Space is limited to 16 people per session.

SUMMER CLASS - WEDNESDAY, JUNE 5

FALL CLASS - WEDNESDAY, SEPTEMBER 11

Cost: \$10 per class

Time: 9 a.m., 1 p.m., or 5 p.m.

Location: Ashwaubenon Community Center

CARD MAKING WITH JANICE

You know how heartwarming it is to receive a hand-written card in the mail? Well this class is the opportunity for you to learn how to make simple cards that will be a joy for you to send. In each class Janice will teach a new design layout and you will leave each session with four completed cards. The cards will be generic enough to be used for many occasions (e.g. thinking of you). Artistic talents are not required for this class. All you need to bring along is a favorite scissors and we will provide the rest of the supplies. Minimum of 5 pre-registered by the Friday before.

DATE: (NO APRIL CLASSES)
4TH TUESDAY OF EVERY MONTH
EVENING CLASS 6:30 PM CLASS THE
4TH TUESDAY OF EVERY MONTH
OR
MORNING CLASS 9:30 AM CLASS THE
4TH WEDNESDAY OF EVERY MONTH

Location: Ashwaubenon Community Center

Fee: \$5 per class

GEOCACHING 101

Learn how to join the world’s largest treasure hunt. Geocaching is an outdoor recreational activity, in which participants use a Global Positioning System (GPS) receiver or mobile device and other navigational techniques to hide and seek containers, called geocaches, at specific locations marked by coordinates. There are literally millions of geocaches hidden around the world—there are probably some near you right now. This is a great activity for all of the family and all skill levels! The idea behind geocaching is to get more people outside and to introduce them to the world around them. The fun happens when the hidden stashes of objects are discovered. At this session, we will show (and tell) you all that you need to get started with this fun hobby.

PRE-REGISTER BY JUNE 7, 2024

DATE: **WEDNESDAY, JUNE 12**

Time: 6:00 p.m.

Location: Ashwaubenon Community Center

Cost: FREE

ACTIVE OLDER ADULTS



BREAKFAST WITH THE EXPERTS

Learn from the presentations of our experts and have the opportunity over breakfast to chat and ask questions of them. Our Breakfast with the Experts Series is sponsored by Oak Park Place Assisted Living and Memory Care-Green Bay.

PRN HOME HEALTH & THERAPY

PRN Home Health & therapy offers a full spectrum of Physical, Occupational and Speech Therapy services.

You can expect Better patient Outcomes and Seamless Integration & support where dedicated clinicians will provide compassionate, Individualized care around your goals and needs.

PRE-REGISTER BY FRIDAY, APRIL 12

DATE: TUESDAY, APRIL 16

Presenter: Mary Boyce

Time: 9:30-10:30 a.m.

Location: Ashwaubenon Community Center

Fee: Free



GREEN BAY REHABILITATION

Green Bay Rehabilitation Hospital is a new 40 bed inpatient rehabilitation facility. The hospital provides specialized rehabilitation services for patients with functional deficits as a result of debilitating illnesses or injuries. Through the inpatient rehabilitation programs, our goal is to help patients recover quickly and return home at their maximum level of independence. Treatment is tailored based upon each patient's medical condition and needs.

PRE-REGISTER BY FRIDAY, SEPTEMBER 13

DATE: TUESDAY, SEPTEMBER 17

Presenter: Matthew Lauders

Time: 9:30-10:30 a.m.

Location: Ashwaubenon Community Center

Fee: Free

VIETNAM: A LOOK BACK

Bob Lotto, who served in the 1st Air Cavalry from 1966-1976, will be presenting a look back at Vietnam. This presentation will help us understand and remember what it was like to be an infantryman serving during that time.

PRE-REGISTER REQUIRED BY JUNE 7

DATE: WEDNESDAY, AUGUST 14TH

Time: 9:30 a.m.

Location: Ashwaubenon Community Center

Fee: Free

ICE CREAM SOCIAL

Cool off with a delicious ice cream sundae or cone while enjoying the sounds of "ROCKER!" during the weekly Concert in the Park. There will be different toppings that will allow you to personalize your sundae. This concert is sponsored by Pepsi Cola of Green Bay.

DATE: WEDNESDAY, JULY 31

Time: 11:30 a.m. – 2:00 p.m.

Location: Klipstine Park

Fee: \$1.00



ASHWAUBENON SENIOR CITIZEN DAY AT CONCERT IN THE PARK

All Ashwaubenon residents 55 and over, today is your day! Come and enjoy "Let Me Be Frank" during the weekly Concert in the Park located at Klipstine Park. Thanks to an extremely generous donation from a long time Ashwaubenon resident all Ashwaubenon seniors will be offered lunch for \$3 (ID or proof of residency is required). Lunch includes hamburger, brat or hot dog, chips, cookie and drink!!! This concert is sponsored by Woodside Senior Communities.

DATE: WEDNESDAY, JULY 17

Time: 11:30 a.m. – 2:00 p.m.

Location: Klipstine Park

Fee: \$3 for Ashwaubenon residents 55 and older (ID or proof of residency required)

BEACH DAY FOR SENIORS!

Join the Village of Ashwaubenon's Park and Recreation Department Thursday, July 25th 10am for our Beach Day for Seniors! Ashwaubomay Lake will open 1hr earlier for

Ashwaubenon's Seniors. After spending the morning enjoying the sun and the beach, stay for lunch. The Park and Recreation Department will be offering a lunch special for our seniors! This \$5 lunch will include: hamburger/brat/hot dog, chips, soda or water and a frosty treat from our concessions.

PRE-REGISTER REQUIRED BY JULY 19TH.

DATE: THURSDAY, JULY 25

Time: 10:00 a.m.

Location: Ashwaubomay Lake

Fee: \$5

ACTIVE OLDER ADULTS



LUNCH & LEARN

Learn from the presentations of our experts and have the opportunity over lunch to chat and ask questions of them. Lunch and Learn will provide a sandwich and soup to all participants. Sponsored by Woodside Senior Communities. Call us at 492-2331 to register.



BASIC EXERCISE /WELLNESS

Woodside's Wellness Coordinator will be presenting on all things wellness and the positive, holistic effects you can all feel when implementing simple wellness plans into your life.

Pre-register by Friday, May 10

DATE: TUESDAY, MAY 14

Presenter: Woodside Staff

Time: Noon-1:00 p.m.

Location: Ashwaubenon Community Center

Fee: Free

TECHNOLOGY IS YOUR FRIEND!

Often times the stigma within the senior population is to fear and run from technology. Now, more than ever, technology is truly able to make all of our lives, especially those who are aging, more convenient, enjoyable and safe. In this session we will discuss how new technology can help you with everything in your daily life, from grocery pick up to emergency safety systems.

Pre-register by Friday, July 5

DATE: TUESDAY, JULY 9

Presenter: Woodside Staff

Time: Noon-1:00 p.m.

Location: Ashwaubenon Community Center

Fee: Free

CARE IN THE COMMUNITY

At this session we will have Heatland's team come in to help explain the different care options that are available and the difference between them. We will go over Hospice, Palliative, home health and home care.

Pre-register by Friday, June 7

DATE: TUESDAY, JUNE 11

Presenter: Woodside Staff

Time: Noon-1:00 p.m.

Location: Ashwaubenon Community Center

Fee: Free

WILLS & ESTATE PLANNING

Join us as Attorney Devin C. Shanley from Peterson, Berk & Cross, S.C. discusses the importance of creating a comprehensive estate plan. A good estate plan reflects your life and mirrors the values you live out every day. Estate planning is for everyone, not just the wealthy, aging or ill. Shanley will share how you can develop a plan.

Pre-register by Friday, August 9

DATE: TUESDAY, AUGUST 13

Presenter: Attorney Devin C. Shanley

Time: Noon-1:00 p.m.

Location: Woodside Senior Communities

Fee: Free



WELLNESS WORKSHOPS WITH COURTNEY

Join us for this 4-part series where we will talk about everything health and wellness. Courtney has been a Registered Nurse for almost 10 years and is a Certified Health Coach. Each workshop will consist of an educational presentation, an activity to jump start your wellness journey, and time for questions. You will learn about subjects such as chronic pain and inflammation, how to move waste from your waist, and ways that you can make health your hobby. All you need to bring is yourself!

DATE: THURSDAYS-MAY 30, JUNE 13, JUNE 27, JULY 11

Time: 1 p.m.

Location: Ashwaubenon Community Center

Fee: \$20

GREEN BAY ROCKERS

Come join us for a day at the ball field. Help us cheer on the hometown Green Bay Rockers baseball team. The cost will

include a game ticket and meal (hot dog, chips, water).

PRE-REGISTER REQUIRED BY JUNE 7

DATE: THURSDAY, JUNE 20

Time: 12:05 p.m.
(game start)

Location: Capital Credit Union Park

Fee: \$14



ACTIVE OLDER ADULTS



SEWING CLUB

Love to sew, knit, crochet or quilt? Bring your latest project and join this fun group of ladies! Inspiration included. We will be meeting every Monday morning at 10am in the Ashwaubenon Community Center Activity Room!!!

DATE: EVERY MONDAY

Time: 10:00 a.m.-3:00 p.m.

Location: Ashwaubenon Community Center

Fee: \$5 per month

BOOK CLUB

Are you an avid reader that can't wait to discuss the latest novel you just finished? The Book Club at the Ashwaubenon Community Center invites you to join them the second Wednesday of the month in the Community Center Lobby at 1pm. This Club is done in partnership with the Brown County Library, Ashwaubenon Branch.

DATE: 2ND WEDNESDAY OF EVERY MONTH

Time: 1:00 p.m.

Location: Ashwaubenon Community Center

Fee: Free

MOVIE MATINEE

Come join us the first Tuesday of the month for a movie and snacks! We will be watching movies on our giant projector screen to make you feel like you are at the theater. Every month will feature a different film and genre. This event is FREE! Interested? Call our office for the featured movie of the month!

DATE: 1ST TUESDAY OF EVERY MONTH

Time: 1:00 p.m.

Location: Ashwaubenon Community Center

Fee: Free

STUDIO FOR ARTISTS

Join artists in an open studio forum every Thursday from 9am to 12 pm. Work on your own projects / paper / canvas / artworks with like minded artists. Tables, chairs, and water available for use. No instructors. Just a great setting for artists to interact and work on their own.

DATE: EVERY THURSDAY

Time: 9:00 a.m.-Noon

Location: Ashwaubenon Community Center

Fee: Free

DONUTS & DOCUMENTARIES

Interested in learning something new in an entertaining fashion? Join us here, at the Ashwaubenon Community Center, the third Friday of the month for Doughnuts and Documentaries. Every month we will show a critically acclaimed documentary on various subject matters while you enjoy coffee and doughnuts! This is sure to satisfy both your curiosity and your stomach!

DATE: 3RD FRIDAY OF EVERY MONTH

Time: 9:30 a.m.

Location: Ashwaubenon Community Center

Fee: Free

KNITTING CLUB

Join us every Tuesday to work on your knitting project. This fun club offers space to work on projects and also brings a social aspect.

DATE: EVERY TUESDAY

Time: 10:00 a.m.-2:00 p.m.

Location: Ashwaubenon Community Center

Fee: \$5 per month

EMBROIDERY CLUB

Bring your current embroidery project and enjoy some much needed stitching time. We meet the first Wednesday of the month from 9 am - Noon in the Ashwaubenon Community Center Activity Room. It's free and fun.

DATE: 1ST WEDNESDAY OF EVERY MONTH

Time: 9:00 am - Noon

Location: Ashwaubenon Community Center

Fee: Free

LINE DANCING CLUB

Join us Tuesday and/or Friday mornings for our Line Dancing Club. Everyone is welcome to join this club. We will work together to learn new moves.

DATE: EVERY TUESDAY & FRIDAY

Time: 9:00 a.m.-11:00 a.m.

Location: Ashwaubenon Community Center

Fee: \$5 per month

ADULT PROGRAMS



ASHWAUBENON WALKING CLUB

Our club walks every Wednesday, except during inclement weather, at 9am. Typically we walk Titledown in winter and rotate Ashwaubenon locations monthly beginning in April. A weekly reminder will go out on Tuesdays.

All the walkers walk at a different pace, so you do not have to worry about keeping up with anyone! We usually walk for an hour or 3 miles whichever comes first, but everyone is free to drop off at anytime!

EVERY WEDNESDAY

Time: 9:00 a.m.
Location: Check for monthly location
Fee: Free

KAYAK TOUR WITH KAYAK WISCONSIN

Join Sheri on a guided kayak tour down the Fox River. Everyone will meet at the Wrightstown Boat Launch. Sheri will provide everything you need to know along with a quick Kayak 101 lesson. After Sheri helps launch everyone, she will guide you along the banks of the Fox River. This tour is for both the experienced and not so experienced kayaker. There is a 10 person MAXIMUM.

PRE-REGISTER BY TUESDAY, AUGUST 6

DATE: MONDAY, AUGUST 12
Time: 10 a.m.
Location: Wrightstown Boat Launch
Fee: \$22

FIT & FLEXY W/ KATE

Cardio kick with intervals of strength. Bring water and hand weights.

SPRING SESSIONS-TUESDAY & THURSDAYS

SUMMER SESSIONS-THURSDAYS

SPRING 1: APRIL 4-30

SPRING 2: MAY 2-MAY 30 (no class 5/23)

SUMMER 1: JUNE 6-JUNE 27 (no class 6/20)

SUMMER 2: JULY 11-AUGUST 1

SUMMER 3: AUGUST 8-AUGUST 29 (no class 8/15)

Time: 5:30 p.m.-6:15 p.m.
Location: Ashwaubenon Community Center
Spring Fee: \$48 resident; \$63 non-resident
Summer Fee: \$24 resident; \$39 non-resident
Mini Summer Fee: \$18 resident; \$33 non-resident

DEEP STRETCH W/KATE

Connect breath with body, realign, relax and restore. Bring water and yoga mat.

SPRING SESSIONS-MONDAYS

SUMMER SESSIONS-THURSDAYS

SPRING 1: APRIL 8-29

MINI SPRING 2: MAY 6-MAY 20

SUMMER 1: JUNE 6-JUNE 27 (no class 6/20)

SUMMER 2: JULY 11-AUGUST 1

SUMMER 3: AUGUST 8-AUGUST 29 (no class 8/15)

Time: 4:30 p.m.-5:15 p.m.
Location: Ashwaubenon Community Center
Fee: \$24 resident; \$39 non-resident
Mini Summer Fee: \$18 resident; \$33 non-resident

* NEW! ACTIVE ADULTS

Cultivate cardiovascular health, strength, and flexibility in this feisty, social, moderate-intensity class for adults. Easy-to-follow standing on the floor routines with intervals of strength and balance challenges. Bring water bottles and optional hand weights. Dress for movement and fun!



MONDAYS WITH KATE

SUMMER I JUNE 3 - 24

SUMMER II JULY 1 - 22

SUMMER III JULY 29 - AUGUST 26 (no class 8/12)

THURSDAYS WITH LISSA

SUMMER I JUNE 6 - 27 (no class 6/20)

SUMMER II JULY 11 - AUGUST 1

SUMMER III AUGUST 8 - 29 (no class 8/15)

Time: 10:30 a.m.-11:15 a.m.
Location: Ashwaubenon Community Center
Fee: \$24 resident; \$39 non-resident
Mini Fee: \$18 resident; \$33 non-resident

ADULT FITNESS



ZA' JAMMIN MASHUP!

Cardio dance at its best! Zumba® inspired class combines current and oldie pop songs with Latin dance moves into one, time-flying experience! Fun to do and easy-to-follow! Tone your muscles and condition your cardio-vascular system. Follow the choreography or dance free style – your choice! Come and shake what your mama gave you! No experience required.



Wear athletic or dance shoes. Ages 14 & up. Classes led by **NETA® certified group fitness instructor (10-year veteran Zumba® instructor), Lissa Marth.**

MONDAY EVENINGS 5:30 – 6:15 P.M.

SUMMER I JUNE 3 - 24

SUMMER II JULY 1 - 22

SUMMER III JULY 29 - AUGUST 26 (no class 8/12)

Time: 5:30 p.m.-6:15 p.m.

Location: Ashwaubenon Community Center

Fee: \$24 resident; \$39 non-resident

Mini Summer Fee: \$18 resident; \$33 non-resident

BARRE/YOGA STRONG FUSION™

Barre meets **Yoga Strong** to develop core and total body strength, reduce stress, increase lean muscle mass and bone density, and improve balance and flexibility! Combines Ballet-inspired movements, isometric exercises, and yoga flow with optional hand weights, straps, yoga bricks, and balls. Bring your own yoga mat and props, hand weights, water bottle, and sweat towel. Classes led by **NETA® Barre Connect™ and Yoga RYT200HR certified group fitness instructor, Lissa Marth**



TUESDAYS

SUMMER I JUNE 4 - 25

SUMMER II JULY 2 - 23

SUMMER III JULY 30 - AUGUST 27 (no class 8/13)



Time: 4:30 p.m.-5:15 p.m.

Location: Ashwaubenon Community Center

Fee: \$24 resident; \$39 non-resident

Mini Summer Fee: \$18 resident; \$33 non-resident

BEST VALUE! BEST VALUE!

Register for a full session at \$6 per class (resident) - online at ashwaubenon.gov or in-person at Park & Rec Office Need Flexibility? Purchase a punch card for

either Lissa or Kate's classes at \$7 per class

- Register and purchase in person at Park & Rec Office
- 10 classes per card = \$70/ resident or

\$85/non-resident

- Expires December 31, 2024
- Must present card in person in class - Non-transferable

FIT & FABULOUS FOR LIFE!

Fun-filled, total-body conditioning class in this calorie-burning, strength-building, body-energizing experience designed to captivate for improved fitness and life! Target improvement in energy, total body strength, cardio-vascular conditioning, and overall fitness from head-to-toe in 40 minutes or less!

Intensity level – participant's choice!

Easy-to-follow floor cardio with strength and resistance intervals using hand weights, gliding discs, balls, and floor mats

Strength training included with EVERY class

Exercise mats recommended for floor exercises. Bring your own mats, hand weights, water bottles, and sweat towels. Classes led by **NETA® certified group fitness instructor, Lissa Marth**

TUESDAY EVENINGS

SUMMER I JUNE 4 - 25 (no class 6/15)

SUMMER II JULY 2 - 23

SUMMER III JULY 30 - AUGUST 27 (no class 8/13)

Time: 5:30 p.m.-6:10 p.m.

Location: Ashwaubenon Community Center

Fee: \$24 resident; \$39 non-resident

Mini Summer Fee: \$18 resident; \$33 non-resident



ADULT LEAGUES / CLASSES



FUN RUN GROUP

These weekly informal runs are designed to promote running as a conditioning, competitive and social activity. The runs are planned to accommodate all ages and all types of runners. This includes the veterans, beginners, joggers, racers, males, females & families. Time certificates are available to EVERYONE in every race. There is no entry fee or advance sign-up required!

Contact Michael Vandenbusch at 819-5510 for further information.

DATES: MAY 1 - SEPTEMBER 25
Time: WEDNESDAYS @ 6 p.m.
Location: Ashwaubenon Community Center

COMMUNITY GARDENS @ BILL DIAMOND PARK

Interested in a garden plot? Call our office for plot availability! We typically still have plots available in late March/April for the upcoming season!

TUESDAY, MARCH 12, 2024 @ 8 A.M.:

Sign-ups for NEW gardeners begin.
Fee: \$25 for season

There are 50 plots in the garden plus 2 elevated gardener boxes. The inorganic garden boxes are designed for individuals with mobility challenges, allowing for easier gardening (less stooping, bending, etc.). The plots are a combination of inorganic(42) and organic(8). Returning gardeners have priority registration, followed by new gardeners. Plot numbers for new gardeners which are available to "reserve" will be posted on our website prior to March 14th. Please call our office for additional details or check out our website at ashwaubenon.gov.

CEDARBURG STRAWBERRY FESTIVAL

Come one, come all to Strawberry Fest in Cedarburg Wisconsin. Spend the day strolling through the amazing downtown Cedarburg area. Vendors and shops vary from arts & crafts to flea and farm market goods. Enjoy the beautiful time of year harvesting strawberries. Wisconsin Strawberries provide the

perfect addition to all those tasty treats! No matter your hobby, this trip is sure to please everyone in your group.

PRE REGISTER BY FRIDAY, JUNE 7, 2024

DATE: SATURDAY, JUNE 22, 2024
Departure: Sam's Parking Lot @ 9:00 am
Return: 6:30 p.m.
Fee: \$39 resident; \$53 non-resident
(Trip includes Motorcoach transportation.
Additional expenses are not included in fee.)
Ages: All ages are welcome.
Anyone under 18 must register with an adult.

BEAN BAG LEAGUES

Our adult bean bag leagues will continue in 2024! Leagues will consist of 6 to 8 teams and will be round robin. Teams will play every team in their league so friends and co-workers can be certain to play each other with some friendly competition. Best out of 3 games, teams play first one to 21 and must win by 2. If you can't play every week, DON'T WORRY because it is completely free to have an unlimited amount of substitutes play in your place.

WEDNESDAY NIGHTS JUNE 12 - JULY 31

Registration Begins: April 1
(Registration Packets available online and in our office)

Time: 7:00 p.m.
Fee: \$30 resident team /\$45 non-resident team
Age: Anyone 18+ is welcome

PICKLEBALL 101

Come and experience the "fastest growing sport in America!" Learn from experienced players from the Packerland Pickleball Players. Players learn the basic skills needed to become familiar with the game, including different types of shots, posture, court positioning, and scoring. Equipment will be provided by the coaches. You bring your enthusiasm to learn!!!



DATE: TUESDAY, JULY 23 & THURSDAY, JULY 25
Location: Fort Howard Park
Fee: \$10
Time: 5:30 p.m.-7:30 p.m.

MILWAUKEE BREWERS TRIP

Cheer on the Milwaukee Brewers as they take on the Atlanta Braves. Tickets will be located in section 109 (the Field Outfield Box along the 1st base side). Game starts at 1:10 p.m.. Cost includes transportation and game ticket.

PRE-REGISTER BY FRIDAY, JUNE 28

DATE: WEDNESDAY, JULY 31
Departure: Sam's Parking Lot @ 10 a.m.
Return: 8:00 p.m. (approximately)
Fee: \$77 Resident/\$92 Non-Resident
Ages: All ages are welcome. Anyone under 18 must register with an adult.

YOUTH PROGRAMS



ROOKIE T-BALL (Parent participation required)

Looking to introduce the sport of baseball to the little ones? T-Ball is designed to introduce the game and skills of baseball to young players. Participants will learn skills such as batting, fielding, throwing and running. Unique and fun games will be incorporated into this fun class to help your child improve the skills they learn. Classes are designed to develop motor skills, promote physical fitness and create self-confidence. Come ready to learn and have fun! Parent participation is required.

THURSDAYS, MAY 23 - JUNE 27 (6 classes)

Ages: 3 & 4 year olds
Time: 5:15 p.m. - 6:00 p.m.
Location: Ashwaubenon Sports Complex
Fee: \$40 resident; \$55 non-resident



ROOKIE SOCCER CAMP

Looking to introduce the sport of soccer to the little ones? Then sign up for this fun camp. Kicking, dribbling, passing and more will be taught. Incorporated into this camp are unique and fun games that will improve your soccer skills, speed, strength, coordination and agility. Rookie soccer is a program that will engage children in physical activity in a non competitive environment. Classes are designed to develop motor skills, promote physical fitness and create self-confidence. Come ready to learn and have fun!

THURSDAYS, JULY 11 - AUGUST 15 (6 classes)

Ages: 3 & 4 year olds
Time: 5:15-6:00 p.m. or 6:00-6:45 p.m.
Location: Pioneer Park
Fee: \$40 resident; \$55 non-resident

LITTLE NINJAS

Children will have fun building teamwork, memory, balance, control, discipline, coordination, fitness and improve their gross motor skills. This class will prepare your little Ninja for the regular Tae Kwon Do class. Instructed by Marcela Charles.

THURSDAYS

SESSION 1: MAY 23-JUNE 27
SESSION 2: AUGUST 22-SEPTEMBER 26

Ages: 5-6 year olds
Time: 5:45 p.m - 6:15 pm
Location: Ashwaubenon Community Center
Fee: \$25 resident; \$40 non-resident

TAE KWON DO

A great activity for the entire family, Tae Kwon Do presents a way for parents and children to learn, have fun and grow together. This family-oriented martial art is for young and old alike. Tae Kwon Do promotes good physical and mental health, builds confidence, and develops respect for self and others. Loose fitting clothing is recommended and limited contact is expected. Participants must be at least 7 years old.

THURSDAYS

SESSION 1: MAY 23-JUNE 27
SESSION 2: JULY 11-AUGUST 15
SESSION 3: AUGUST 22-SEPTEMBER 26

Time: 6:35 p.m.-7:35 p.m.
Location: Ashwaubenon Community Center
Fee: \$25 Resident/\$40 Non-Resident
Ages: 7 & older (adults welcome)



YOUTH PROGRAMS

Park PLAYGROUND Program

JUNE 6 - AUGUST 13

(9 Week Program)

Time: **Monday - Friday**
10:30 a.m. - 12:30 p.m.
and
1:00 p.m. - 4:30 p.m.

Location: Pioneer, Smith, Ft. Howard, Waterford,
Sand Acres, Argonne/Canterbury Park

Is your child 6 years old or older? This summer, encourage them to attend their neighborhood park for the playground program. They are guaranteed a summer full of fun and excitement. Our playgrounds are staffed weekdays with playground leaders who plan and lead activities throughout the summer. Activities include arts and crafts, games, sports, theme weeks, special events and much more!

Your child is sure to enjoy this fun-filled 9 week program. Best of all, the playground program is **FREE!** Children should register with the playground leader at the park they are attending. **All parks will be closed on Thursday, July 4.**

Argonne and Canterbury Park will have a split schedule for 2024. Park Program will staffed at Canterbury on M/W/F and staffed at Argonne T/TH.



ASHWAUBOMAY LAKE

Our park program will be taking a trip to Ashwaubomay Lake for a afternoon of swimming with their favorite Parkees. We will be picking up participants from Sand Acres, Smith and Fort Howard to head over to Ashwaubomay. Cost for this trip will cover our bus expense and lake admission.

THURSDAY, JUNE 27

Time: 1:00 p.m.-3:00 p.m.
Location: Ashwaubomay Lake
Ages: 6 years & up
Fee: \$7

WATER OLYMPICS

Join your favorite playground leaders at the last special event of the summer, WATER OLYMPICS. Participants will take part in various games that have a water added "twist" to them. Don't forget the water sprinklers and balloons that will be on site. Lets finish the summer off right by cooling off at Pioneer Park!!

THURSDAY, JULY 11

Time: 1:30 p.m. - 4:30 p.m.
Location: Pioneer Park
Ages: 6 years & up

SCIENCE RULES

Join your friends and parkees, as we explore the wonderful world of science! Kids will participate in hands on experiments that cover topics such as chemistry, physics, biology and so much more. Kids newfound science knowledge will then be put to the test with a variety of competitions that apply these new skills and promotes critical thinking. We will even be making ice cream with science, yes you heard that right, SCIENCE! As Bill Nye once said, SCIENCE RULES!

THURSDAY, AUGUST 1

Time: 1:30 p.m. - 4:30 p.m.
Location: Pioneer Park
Ages: 6 years & up

YOUTH PROGRAMS/SUMMER FOOD PROGRAM

A FREE SUMMER LUNCH PROGRAM, FOR YOUTH AND TEENS AGES 18 AND UNDER

The **Summer Food Service Program (SFSP)** Program, funded by the US Department of Agriculture (USDA), will be offered at two Village locations in 2024:

- Parkview Middle School (955 Willard Drive)
- Fort Howard Park (2172 South Broadway)

The program is being sponsored through the Ashwaubenon School District (ASD) with support from the Village of Ashwaubenon.

What is a summer lunch program? The Summer Food Service Program (SFSP) ensures that children continue to receive nutritious meals when school is not in session at no charge. This summer, USDA plans to serve more than 200 million free meals to children 18 years and under at approved SFSP sites.

At **Fort Howard Park**, bag lunches will be brought to the park by the ASD food van and served by ASD staff with assistance from the VOA parkees. Serving time is expected to be 12 noon.



At **Parkview Middle School**, free nutritious lunches will be served immediately after summer school (about 12 noon) in the school cafeteria. You do NOT have to be enrolled in summer school to be served a free meal! Children of any income level are welcome to participate. Children and teens



ages 18 and under are welcome.

- A lunch will typically consist of some type of sandwich (bread with chicken, lean meat or fish) or pasta, vegetables, fruit, milk, and possibly some other goodies!
- There is **NO** cost for the summer lunch program for youth ages 18 and under.
- Each person must be present to receive a lunch.
- You do NOT need to register for the program.
- Parents/Guardians: If you would like to eat lunch with the kids, an adult lunch will cost \$3.

The program will begin on Monday, June 10 and run through Friday, August 9. More information about the program will be posted on the ASD website and Ashwaubenon Park & Rec Facebook page as summer nears. Feel free to call 492-2331 for further information!



ASHWAUBENON PARKS & RECREATION

EASTER EGG HUNT

Join us for our 23rd Annual Easter Egg Hunt. Don't miss your chance to see the Easter Bunny.

SATURDAY, MARCH 30, 2024

- Time: Please arrive at 9:15 a.m.
Hunt Begins at 9:30 a.m. SHARP
Hunt will be divided by age groups
- Age Groups: 3 years old and under
4-6 years old
7-10 years old
- Location: Pioneer Park
2570 Timber Lane



YOUTH PROGRAMS

SUMMER DAY CAMP

Ashwaubenon Summer Day Camp will now be in its 10th year of operation. Each week is filled with new themes, exciting games, projects and trips. Our 2024 Summer Day Camp is sold out. Please make sure to check our Fall/Winter brochure for information on our 2025 Summer Day Camp.



TENNIS INSTRUCTION

Game! Set! Match! Do you want to learn the basics of tennis? Our classes will teach proper stroke technique, strategy and court positioning all while having fun. Participants will enjoy 5 weeks of instruction and fun drills. Participants must supply their own tennis racquet. Limited enrollment, sign up soon!



MONDAYS/WEDNESDAYS

JUNE 10 - JULY 15 (no class 7/3)

Time: Pre-Tennis (5 & 6 yrs): 12:45 p.m. – 1:30 p.m.
Beginner (8–11 yrs): 1:30 p.m. – 2:30 p.m.
Intermediate (12–18 yrs): 2:30 p.m. – 3:30 p.m.

Location: Pioneer Park Tennis Courts

Fee: \$50 resident/\$65 non-resident

INTRO TO VOLLEYBALL

Join our new intro to volleyball class. We will learn the basics of the sport. This is a great opportunity to see if volleyball is the right sport for your child. Bump, set, spike! This program will be taught by Park & Rec staff.

DATE: THURSDAYS, JULY 25-AUGUST 15

Grades: 4th-6th Grade

Time: 6:15 p.m.-7:15 p.m.

Location: Valley View Gym
2200 True Lane

Fee: \$35 resident
\$50 non-resident



ROOKIE BASKETBALL CAMP

Looking to play some basketball to either learn or sharpen your skills? Then sign up for this fun camp. Passing, running, dribbling, shooting, rebounding and more will be taught. Incorporated into this camp are unique and fun games that will improve your basketball skills, speed, strength, coordination and agility. Come ready to learn and have fun! Taught by former women's college basketball players from UWGB and St. Norbert College.

MONDAYS JULY 8 - JULY 29 (4 Classes)

3 & 4 years old: 5:30 p.m.-6:15 p.m.

5 & 6 years old: 6:30 p.m.-7:15 p.m.

Location: Ashwaubenon Community Center (Outdoor Court)

Fee: \$35 resident/\$50 non-resident



YOUTH PROGRAMS



SPORTS 101

Each week we will explore a new sport to learn about and play! We will cover the basic skills needed and incorporate fun activities into our mornings. This a great way to find out which activities your child is interested in.

Week 1 Soccer, Week 2 T-Ball,

Week 3 Football, Week 4 Basketball.

TUESDAYS, JUNE 11-JULY 2

Ages: 3 - 5 year olds

Time: 9:00 a.m. - 9:45 a.m.

Location: Pioneer Park Shelter

Fee: \$35 resident; \$50 non-resident



TOT DANCE

Shuffle ball change, hop, hop! Do a little doe-see-doe! Come join the Ashwaubenon Parks and Recreation Department as they bring out the talent in your child. Participants will learn one routine. The last day of class the participants will perform in a recital for their family and friends. Comfortable clothing should be worn.

TUESDAYS, JUNE 11 - JULY 30

(Recital on July 30)

Time: 8:45 a.m. - 9:15 a.m. (2 & 3 year olds)

9:30 a.m. - 10:00 a.m. (3-5 year olds)

Location: Ashwaubenon Community Center

Fee: \$40 resident

\$55 non-resident



INTRO TO SAILING

This is a fun, introductory sailing session using a "quick-start" method of learning to sail Hobie® Wave catamarans. In a short period of time students, ages 8 to 99, participating in our introductory sailing lesson are out on the waters of Green Bay sailing on their own. On days where there is no wind, you may have the opportunity to experience kayaking or stand-up paddleboarding. We encourage individual growth by challenging one's self all while fostering a love for the water and sailing.

We look forward to enjoying a fun and safe day on the water with you!

PRE-REGISTER BY FRIDAY, JUNE 21

WEDNESDAY, JUNE 26

Ages: 8 and up

Time: 5:30 p.m.-8:30 p.m.

Location: Green Bay Sail & Paddle

101 Bay Beach Road, Green Bay, 54302

Fee: \$55

INTRO TO KAYAKING

This is a fun, introductory kayaking session using a "quick-start" method of learning to kayak. In a short period of time students, ages 8 to 99, participating in our introductory kayaking lesson are out on the waters of Green Bay kayaking on their own. For those days when our staff has to make the decision that the weather outside simply isn't safe to be on the water, your class will be moved into our indoor classroom where you will enjoy several kayaking related activities. We encourage individual growth by challenging one's self all while fostering a love for the water and kayaking. We look forward to enjoying a fun and safe day on the water with you!

PRE-REGISTER BY FRIDAY, JULY 19

WEDNESDAY, JULY 24

Ages: 8 and up

Time: 5:30 p.m.-8:30 p.m.

Location: Ashwaubomay Park

Fee: \$55





NEIGHBORHOOD SPECIAL EVENT



Come one, Come all to our neighborhood special event series! We'll be bringing fun family events to 4 parks in 2024, to encourage moms, dads, the kids and neighborhood families to get out and meet each other and have a great time too! Each evening event will include a **FREE hot-dog dinner** (dogs, chips, lemonade), fun games run by our entire parkee staff, all followed by our popular movie in the park! Be sure to put this event in your calendar, and take a walk over.



A special thank you to the Ashwaubenon Lions Club for purchasing brand new books and glow sticks that are passed out during these events. This kind act goes a long ways towards promoting literacy and family time together in our community!

NEIGHBORHOOD EVENT SITES:

TUESDAY, JULY 16
Fort Howard Park

TUESDAY, JULY 23
Smith Park

TUESDAY, JULY 30
Waterford Park

TUESDAY, AUGUST 6
Sand Acres Park

Each event begins @ 6 p.m. Games and activities throughout the evening until the movie starts @ dusk! See page 29 for movie titles and descriptions!

SUMMER MOVIES IN THE PARK

MOVIE IN THE PARK Imagine parking yourself on a blanket on a warm summer night and watching your favorite movie on the giant screen. Come to the Park to enjoy your favorite movies.



"WONKA"

**TUESDAY, JULY 16
@ FORT HOWARD PARK**

This fantasy musical film follows the story of Willy Wonka, the famous but eccentric chocolatier based on the character from Roald Dahl's novel. In particular, it emphasizes his rise to the top. The narrative traces his beginnings as a young adult who started as an employee selling chocolate in a store until he became driven to enter the chocolate industry eventually. This film acts as a prequel to the 1971 film adaptation of Dahl's novel.



"MIGRATION"

**TUESDAY, JULY 23
@ SMITH PARK**

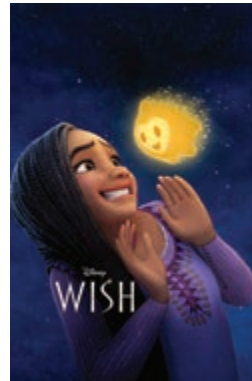
The animated film tells the story of a family of ducks dreaming of the perfect getaway vacation. Mack, the overprotective father, cannot take the risk of traveling from New England all the way to Jamaica. When his two kids, Dax and Gwen, try to convince him to take the leap, Mack must navigate the tricky route through New York City while keeping his family safe.



"THE SUPER MARIO BROS MOVIE"

**TUESDAY, JULY 30
@ WATERFORD PARK**

Based on the Super Mario video games, the animated film follows Mario on his adventures with his friends. Mario joins forces with Princess Peach and Toad. The trio is in search of Mario's brother Luigi. Together, they hope to defeat the evil Bowser and save the Mushroom Kingdom from his destructive schemes.



"WISH"

**TUESDAY, AUGUST 6
@ SAND ACRES PARK**

A young woman named Asha possesses wild wishes for happiness. After making a wish on a starry night, Asha is surprised when Star, a ball of cosmic energy, comes down to accompany her. Asha and Star must work together to defeat the ruthless ruler, King Magnifico, who threatens the safety of her local community. With Asha's unstoppable courage and Star's magical powers, nothing is impossible.

FUNFLICKS OUTDOOR MOVIES

With 5 screen sizes to choose from, we can accommodate groups of 5 to 5000

movies@funflicks.com

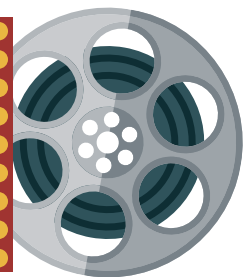
FUNFLICKS.com Big Screens! Big Sound! Big Fun!™

We deliver the Outdoor Movie Experience to your home.
Call us at 920-472-4495 for your night to remember.

***NOTE: IF INCLEMENT WEATHER, MOVIE WILL BE MOVED TO THE FOLLOWING EVENING AT THE SAME LOCATION.**

Sponsored By:

State Farm
Shawn Dockry



EARLY "FALL" PROGRAMS

VOLUNTEER COACHES ARE NEEDED
for our football program. If you or someone
you know would like to volunteer,
please let us know during registration.

TOTS FOOTBALL CAMP

Looking for your children to play some football and learn the basic skills? Then sign up for this fun camp. Passing, running, catching, basic defense and offense will be taught. Incorporated into this camp fun games that will improve your football skills, speed, strength, coordination and agility.

SATURDAYS, SEPTEMBER 14 - OCTOBER 19

Ages: 3 - 5 years old

Time: 8:30 a.m. - 9:10 a.m.

Location: Ashwaubenon Sports Complex
1640 Fernando Drive

Fee: \$40 resident
\$55 non-resident

*Non-contact while playing.

YOUTH FLAG FOOTBALL LEAGUE



Hut, Hut, Hike! This fall we will be offering the youth Flag Football program for boys and girls who are in grades 3-6 for the 2024-2025 school year. The Flag football program was designed to teach participants about the sport of football while emphasizing participation and sportsmanship. Players will learn various skills, while participating in a non-contact fun and exciting program.

SATURDAYS, SEPTEMBER 14 - OCTOBER 26

(Dates depending on number of teams)

Leagues: Grades 3 & 4 games start at 10:15 a.m.
Grades 4 & 5 games start at 11:15 a.m.

Location: Ashwaubenon Sports Complex
Outfield of Softball Fields
1640 Fernando Drive

Fee: \$45 resident (includes t-shirt)
\$60 non-resident

Players may begin signing up immediately.

Sign-up Deadline: Friday, September 6

First Day of Play: Saturday, September 14

Note: Players will be randomly assigned to teams.

ROOKIE FOOTBALL CAMP

Looking to play some football to either learn or sharpen your skills? Then sign up for this fun camp. Passing, running, catching, blocking defense, offense and more will be taught. Incorporated into this camp are unique and fun games that will improve your football skills, speed, strength, coordination and agility. This camp will get you ready to play Youth Flag Football.

SATURDAYS, SEPTEMBER 14 - OCTOBER 19

Ages: Grades 1 - 2

Time: 9:20 a.m. - 10:00 a.m.

Location: Ashwaubenon Sports Complex
1640 Fernando Drive

Fee: \$40 resident
\$55 non-resident

*Minimal contact while playing.

ASHWAUBENON PUNT, PASS & KICK CONTEST

Be sure to join us for the annual Ashwaubenon Punt, Pass & Kick Contest this fall. The competition is held on Diamond #4 at the Ashwaubenon Sports Complex. Best of all, the event is FREE!! Just stop over before or after your game or practice. Event is open to ages 6-15 (as of December 31st of 2024)

SATURDAY, SEPTEMBER 28

Time: 9 a.m. - noon

Location: Ashwaubenon Sports Complex
1680 Fernando Drive

Fee: FREE!

Call the Parks, Recreation & Forestry Department for PPK rules!





ASHWAUBENON'S SWIMMING LESSON PROGRAM

The Ashwaubenon Swimming Lesson Program helps swimmers of all ages and varying abilities develop their swimming and water safety skills. It is designed to give students a positive learning experience. If you are unsure what level to enroll in, contact our Aquatic Coordinator and she will help you choose the appropriate class.

PARENT AND ME AQUATICS (6 MONTHS - 3 YEARS OLD)

Participants must be accompanied by an adult in the water for the entire 30 minute class. Parents are instructed how to safely work with their child in the water including how to properly support and hold their child. The child will be exposed to games that use basic movements, such as kicking, arm strokes and breath control. Activities are based on the developmental abilities of the child.

TINY TOTS - (AGES 3 - 4 YEARS OLD)

Blowing bubbles, putting face in water, back and front float with assistance, front crawl arm action, exit water on their own.

LEVEL 1

Enter & Exit water independently, front and back float with support, 3 bobs, blow bubbles, front and back crawl with assistance.

LEVEL 2

Fully submerge head & hold breath for 3 seconds, jump into water, 10 bobs, front float and back float unassisted 5 seconds, front & back glide 2 body lengths, front and back crawl unassisted 5 yards, retrieve a submerged object 2 times assisted.

LEVEL 3

Enter water by jumping in from the side into deep water, retrieve a submerged object 2 times unassisted, front & back glide 5 body lengths, tread water for 30 seconds, front crawl with rotary breathing 15 yards, back crawl 15 yards, elementary backstroke kick 15 yards, head first entry from the side in a sitting & kneeling position.

LEVEL 4

Front crawl with rotary breathing 25 yards, back crawl 25 yards, elementary backstroke 15 yards, breaststroke & sidestroke (scissors) kick 15 yards, front and back open turns, tread water for 2 minutes (using two different kicks), standing front dive from side of pool, feet first surface dive, survival swimming for 30 seconds.

LEVEL 5

Front crawl with alternate breathing 50 yards, back crawl 25 yards, elementary backstroke 25 yards, sidestroke and breaststroke 15 yards, dolphin kick 15 yards, tread water for 5 minutes (using two different kicks), tuck and pick surface dives, long shallow dive, survival swimming for 1 minute.

LEVEL 6/7

Front crawl and back crawl with 100 yards, breaststroke and sidestroke 25 yards, butterfly 15 yards, front and back flip turns, open turn (sidestroke), tread water for 6 minutes (1 minute w/o hands, 2 minutes w/ hands x 2), speed turn and pull out for breaststroke, surface dive & retrieve an object from the bottom (8-10 ft deep).

DIVING (offered on instructor availability)

This class will teach the basic fundamentals and techniques of diving. You will learn approaches, jumps and various dives. This class is for ages 6 and up. Swimmers must be comfortable in deep water.

SEMI-PRIVATE LESSONS

(offered on instructor availability)

Specialized instruction with a maximum of three students per class (minimum of two). These classes will be run on the weekends during the open swim time frame. Only available upon request and instructor availability. Each lesson is 30 minutes long.

PRIVATE LESSONS

(offered on instructor availability)

Whether you are interested in getting comfortable in the water for the first time, want to improve your form or swim faster, we can develop a program to suit your needs. Private lessons are perfect for those who prefer one-on-one attention. An instructor will work with you to determine the best path to help you achieve your personal goals. Each lesson is 30 minutes long.



SPRING AQUATICS



LEARN-TO-SWIM FEES

Fee Per Session (10 classes):

\$35 resident; \$50 non-resident

Fee per Session (5 classes):

\$25 resident; \$40 non-resident

SPRING SWIMMING LESSON SCHEDULE

SPRING SESSION 1

MONDAYS & WEDNESDAYS (twice a week/10 classes)
APRIL 8 - MAY 8

TIME

5:45 - 6:25 p.m.

LEVELS OFFERED

TT/2/3/5/PC

6:30 - 7:10 p.m.

TT/2/3/4

SPRING SESSION 1

SATURDAYS (once a week/5 classes)
APRIL 6 - MAY 4

TIME

10 - 10:40 a.m.

LEVELS OFFERED

TT/2/3/5/PC

10:45 - 11:25 a.m.

TT/2/3/4



SEMI-PRIVATE LESSONS

Specialized instruction with a maximum of three students per class (minimum of two). Only available upon request and instructor availability. Each lesson is 30 minutes long.

Fee per session: \$75 resident
(10 lessons) \$90 non-resident

Fee "Mini" session: \$47 resident
(5 lessons) \$62 non-resident

Call 492-2331 to request

PRIVATE LESSONS

Whether you are interested in getting comfortable in the water for the first time, want to improve your form or swim faster, we can develop a program to suit your needs. Private lessons are perfect for those who prefer one-on-one attention. An instructor will work with you to determine the best path to help you achieve your personal goals. Each lesson is 30 minutes long.

Fee: 1 Lesson \$30 resident \$45 non-resident
3 Lessons \$65 resident \$80 non-resident
7 Lessons \$150 resident \$165 non-resident

Call 492-2331 to request

COMPETITIVE PRIVATE LESSONS

Specialized instruction for swimmer competing at a competitive level. This is for swimmer looking for stroke refinement and individualized attention. 30 minute lesson with an evaluation of skills. Lessons are taught by Jen Steffel who has over 31 years of competitive swim experience.

Fee: \$25 per lesson

Call 492-2331 to request

ASHWAUBENON COMMUNITY POOL SPRING/SUMMER OPEN & LAP SWIM

Daily Fees: \$3.00 Children (2-17)
\$3.50 Adults (18-59)
\$3.00 Seniors (60 & over)

Passes: (Good for 10 visits)
\$27.00 Child/Seniors
\$31.50 Adults
– Children Under 2 are FREE –

*Please note the pool availability is subject to change depending on school district physical education use.

Check out our website ashwaubenon.gov or stop in at the pool for the pool open swim schedule



THINGS YOU SHOULD KNOW

CHANGING ROOM POLICY: Children 5 and older are asked to use appropriate changing rooms. We also have 3 family changing rooms available in the warm water pool.

PARENT WATCH POLICY: Parents are welcome to watch, but with your child's interest in mind, we ask that you keep interaction with your child to a minimum. Our instructors have found that the quality of instruction has often been affected by parents and/or sibling distraction, interruptions and various other concerns during class time. We also feel it is most beneficial for children to have recreational time with their peers. Our instructors always welcome the opportunity to discuss participant's progress with parents. Please contact your instructor before or after class with any special concerns.

REFUND POLICY: If a participant cancels a registration, \$5 will be charged for processing with the balance of the activity fee being refunded. Cancellations may occur up to two days before an activity

unless there is a registration deadline. NO REFUNDS will be given after an activity has started

POOL TEMPERATURE: Competitive pool is kept at 81 degrees F and the warm water pool is kept at 89 degrees F.

LOCKER FACILITIES: The pool offers storage for your belongings while using the pool. There are lockers available in each locker room that may be locked with a personal lock.

GOGGLES: For levels 1-3 we do not recommend goggles because children need to learn to be comfortable in the water without any aids. However, with the upper level classes, goggles are recommended as students are expected to spend a significant amount of time doing a variety of skills with their faces in the water. Goggles will help to reduce eye irritation.

Please note: Mask type goggles with the nose piece attached are strictly prohibited.

Community Pool

AVAILABLE RENTALS/PACKAGES

Competition Pool (Whole)
Competition Pool (Per Lane)
Warm Water Pool (Whole)
Multi-Purpose Room
Upper Viewing Deck

PACKAGES

Competition Pool & Multi-Purpose Room
Warm Water Pool & Multi-Purpose Room
Both Pools & Multi-Purpose Room
Entire Facility (Both Pools/Multipurpose/Viewing Deck)

You can reserve the pool and multipurpose room in 1½ hour time slots for any special occasion. Your friends and family can enjoy the pool all to yourselves! A \$150 security deposit is required at the time of booking for all pool rentals.

BASE COST PER 1.5 HOURS (FEES WILL VARY)

\$140/resident	\$155/non-resident
\$65/resident	\$80/non-resident
\$125/resident	\$140/non-resident
\$75/resident	\$90/non-resident
\$75/resident	\$90/non-resident

BASE COST PER 1.5 HOURS (FEES WILL VARY)

\$155/resident	\$170/non-resident
\$145/resident	\$160/non-resident
\$250/resident	\$265/non-resident
\$275/resident	\$290/non-resident



AQUATICS



OPEN SWIM FIT TRAINING

Get your morning laps in! This class is designed for swimmers that want to maintain their conditioning during the off season. It is most appropriate for swimmer who already have a strong swim ability. Similar to a Masters swim program this class will get you in the water for a guided work out set or give you the ability to work on your own swimming goals. Taught by Jen Steffel.

MONDAYS AND THURSDAY

SPRING SESSION 1:

(10 Classes): **APRIL 8TH – MAY 9TH**

SPRING SESSION 1 PLUS WEDNESDAY:

(5 Classes): **APRIL 10TH – MAY 8TH**

SPRING MINI SESSION:

(5 Classes): **MAY 13TH – MAY 30TH (NO CLASS 5/27)**

SPRING SESSION MINI PLUS WEDNESDAY:

(3 Classes): **MAY 15TH – MAY 29TH**

SUMMER SESSION 1:

(10 Classes): **JUNE 3RD – JULY 5TH (NO CLASS 7/4)**

SUMMER SESSION 1 PLUS WEDNESDAY:

(5 Classes): **JUNE 5TH – JULY 3RD**

SUMMER SESSION 2:

(10 Classes): **JULY 8TH – AUG 8TH**

SUMMER SESSION 2 PLUS WEDNESDAY:

(5 Classes): **JULY 10TH – AUG 7TH**

SUMMER SESSION 3:

(10 Classes): **AUG 12TH – SEPT 12TH**

SUMMER SESSION 2 PLUS WEDNESDAY:

(5 Classes): **AUG 14TH – SEPT 11TH**

Time: 5:30 a.m. - 7:00 a.m.

Fee: 10 classes \$50 Resident/\$65 Non-Resident
5 classes \$25 resident/\$40 Non-Resident

DEEP WATER EXERCISE

We're taking the water exercise to the deep end of the pool. While it is very low impact on your joints it has a high impact on your cardiovascular system. We'll use equipment and water resistance to target specific muscle groups throughout the body. You do not need to know how to swim to join the class as we'll be using aqua belts. Class will be taught by instructor Chelsey Larsen.

TUESDAYS & THURSDAYS

SPRING SESSION: APRIL 9TH – MAY 9TH

MINI SPRING SESSION: MAY 14TH – MAY 28TH

SUMMER SESSION 1: MAY 30TH – JULY 2ND

SUMMER SESSION 2: JULY 9TH – AUG 8TH

MINI SUMMER SESSION: AUG 13TH – AUG 27TH

Time: 5:45 p.m.-6:30 p.m.

Location: Ashwaubenon Community Pool

Fee: \$35 resident; \$50 non-resident

Mini Session Fee: \$17.50 per person

THERAPEUTIC CORE & MORE

This class is a Warm water class taught by therapists to focus on flexibility, strength building, range of motion and movement. The class will be low impact and low intensity. Instructed by Brian Weitz, PTA & Jackie Goddard, DPT

TUESDAYS AND THURSDAYS

SPRING SESSION: APRIL 9TH – MAY 9TH

MINI SPRING SESSION: MAY 14TH – MAY 28TH

SUMMER SESSION 1: MAY 30TH – JULY 2ND

SUMMER SESSION 2: JULY 9TH – AUG 8TH

MINI SUMMER SESSION: AUG 13TH – AUG 27TH

Time: 3:30 p.m. - 4:30 p.m.

Location: Ashwaubenon Community Pool / Warm Water Pool

Fee: \$40 / Resident \$55 Non-Resident

Mini Session Fee: \$20 per person

WATER EXERCISE

For all ages and abilities! Suit up and take the plunge. Water is a perfect environment for exercising, losing weight and toning up. Water helps support, heal and relax muscles that have been strained or tightened. This program will increase your strength and flexibility. You will make new friends and have fun exercising. You do not need to be a swimmer to enroll in this program. Taught by instructor Diane Kerlin.

TUESDAY & THURSDAY EVENINGS

SPRING SESSION: APRIL 9TH – MAY 9TH

MINI SPRING SESSION: MAY 14TH – MAY 28TH

SUMMER SESSION 1: MAY 30TH – JULY 2ND

SUMMER SESSION 2: JULY 9TH – AUG 8TH

MINI SUMMER SESSION: AUG 13TH – AUG 27TH

Time: 6:00 p.m. - 6:45 p.m.

Fee: \$35 resident; \$50 non-resident

Mini Session Fee: \$17.50 per person

AQUA BOOT CAMP

A High intensity water fitness program utilizing a variety of equipment and exercises to challenge your strength, flexibility, and give you a great cardio workout. Instructed by Junius Ho, MS

TUESDAYS

SPRING SESSION: APRIL 9TH – JUNE 4TH

SUMMER SESSION 1: JUNE 18TH – AUG 13TH

Time: 4:30 p.m. - 5:15 p.m.

Fee: \$40 resident; \$55 non-resident

SUMMER AQUATICS



SUMMER SWIMMING LESSON PROGRAM

The Parks, Recreation & Forestry Department will be offering Parent and Me Aquatics, Tiny Tots and Levels 1-7 this summer at the Ashwaubenon Community Pool, 2391 S. Ridge Road. All lessons are taught by American Red Cross lifeguards with certifications in, CPR, AED, First Aid and additional training in swimming lessons.

SUMMER LESSONS

SESSION 1: JUNE 10TH – JUNE 21ST

SESSION 2: JUNE 24TH – JULY 5TH (No Class 7/4)

SESSION 3: JULY 8TH – JULY 19TH

SESSION 4: JULY 22ND – AUG 2ND

SESSION 5: AUG 5TH – AUG 16TH

AFTERNOON LESSONS (Tuesdays & Thursdays)

SESSION 1E & 1F : JUNE 11TH– JULY 11TH (No Class 7/4)

MINI SESSION : JULY 16TH—JULY 30TH

EVENING LESSONS (Mondays & Wednesdays)

SESSION 6A & 6B : JUNE 10TH– JULY 10TH

MINI SESSION : JULY 15TH-JULY 29TH

Please note: Swim sessions consist of ten (10) forty minute lessons.

Mini Sessions consist of five (5) forty minute lessons.

TIME	LEVELS AVAILABLE	DAYS HELD	SESSION
DAYTIME LEARN-TO-SWIM LESSONS			
9:15-9:55 a.m.	TT, 1, 2, 3, 4, 5	M-F	1-5
10:00-10:40 a.m.	1, 2, 3, 4, 5, PC	M-F	1-5
10:45-11:25 a.m.	TT, 1, 2, 3, 4, 5	M-F	1-5
12:15-12:55 a.m.	TT, 1, 2, 3, 4, 5, 6, 7	M-F	1-5
AFTERNOON LEARN-TO-SWIM LESSONS			
1:00-1:40 p.m.	TT, 1, 2, 3, 4, 5, 6, PC	T/TH	1E & 2E
1:45-2:25 p.m.	TT, 1, 2, 3, 4, 5	T/TH	1F & 2F
2:30-3:10 p.m.	TT, 1, 2, 3, 4, 5	M-F	1-5
EVENING LEARN-TO-SWIM LESSONS			
4:45-5:25 p.m.	TT, 1, 2, 3, 4, 5	M & W	6A & 7A
5:30-6:10 p.m.	TT, 1, 2, 3, 4, PC	M & W	6B & 7B

PC = Parent - Child

Fee per Session (1-5)

\$35 resident; \$50 non-resident

Fee per Mini Session (7A & 7B)

\$25 resident; \$40 non-resident

ONLINE REGISTRATION AND DROP OFF

You can now register for all of our classes online at www.ashwaubenon.gov, you will be able to **register for sessions 1, 2, 1E, 1F & 6A of lessons beginning MONDAY, APRIL 29.**

Session 2E, 2F, 7A & 7B: beginning MONDAY, JUNE 10

Session 4: beginning MONDAY, JUNE 24

Session 5: beginning MONDAY, JULY 8

Registrations can also be dropped off at the Park and Recreation office

8 a.m. - 4:30 p.m. Monday - Friday at
900 Anderson Drive, Ashwaubenon, WI 54304.

JUNIOR LIFEGUARDS

This an excellent choice for youth 11-15 years old. Participants responsibilities include morning workouts, leadership scenarios, in-water safety skills, assisting swim instructors during daily swim lessons and helping at theme nights and special events. Participants will have an opportunity to be trained in Community Water Safety, CPR, use of a lifeguard rescue tube, spine board and other equipment. Junior Lifeguard candidates should be able to perform the front crawl, sidestroke, breaststroke and backstroke. Registration is limited; therefore early registration is encouraged.

MONDAY - THURSDAY

JUNE 17 – JULY 18

Time:

8:30 a.m. - 9:15 a.m.

Fee:

\$35 resident; \$50 non-resident

ASHWAUBOMAY LAKE



ASHWAUBOMAY LAKE



Grab the family and come out and play at Northeastern Wisconsin's largest man-made sandbox & beach area. There's always something happening here. Check out this year's list of special events.

Ashwaubomay lake is located in Ashwaubomay Park, 2881 S. Broadway.

Lake amenities include a zero-depth sand beach entry, diving platform, slide, basketball hoop & raft, sand volleyball court, sand playground equipment, sun arbors and complete snack shack to feed and re-hydrate the troops.

The Lake will open for the season Thursday, June 6th. Hours of operation are daily from 11:00 a.m. - 6:00 p.m. with Wednesdays open until 8:00 p.m. Daily admission is charged. Season passes are also available at the admissions and will be sold during regular business hours. The lake will close for the season on Friday, August 16th.

**Only Coast Guard Approved
Life Jackets Allowed**

DAILY ADMISSION	RESIDENT	NON-RESIDENT
60 years & Over:	FREE	\$4.50
18-59 years:	\$4.50	\$5.50
2-17 years:	\$3.50	\$4.50
Under 2:	FREE	FREE

ASHWAUBOMAY LAKE SEASON PASSES

EARLY BIRD DISCOUNT: Season passes purchased by Wednesday, June 5 are entitled to a \$5 discount.

Season passes may be purchased at the Parks, Recreation & Forestry Department office during normal business hours, 7:30 a.m. - 4:30 p.m. Monday-Thursday and 7:30 a.m.-11:00 a.m. on Fridays. Beginning June 6, passes will be sold at Ashwaubomay Lake as well.

	THROUGH JUNE 5	JUNE 6 OR AFTER
Resident Individual	\$35	\$40
Resident Family	\$75	\$80
Non-Resident Individual	\$50	\$55
Non-Resident Family	\$90	\$95

PURCHASING ASHWAUBOMAY LAKE SEASON PASSES:

- A family season pass includes up to four (4) members living at the same address, with a maximum of two (2) adults. For families larger than four (4), additional passes may be purchased at \$10 per person/pass.
- Children under 2 do not need a season pass.
- Proof of residency is required for resident passes.

FEATURED EVENT

SHOW AT SHMAY

SATURDAY, JUNE 22

"THE LITTLE MERMAID"



The youngest of King Triton's daughters and the most defiant, Ariel longs to find out more about the world beyond the sea and, while visiting the surface, falls for the dashing Prince Eric. While mermaids are forbidden to interact with humans, Ariel must follow her heart. She makes a deal

with the evil sea witch, Ursula, which gives her a chance to experience life on land but ultimately places her life – and her father's crown – in jeopardy

Time: Movie Starts at 1pm

Fee: Included with Lake Admission

SPECIAL EVENTS

FATHER'S DAY SWIM

SUNDAY, JUNE 16 (ALL DAY)

Bring your father and friends to Ashwaubomay Lake for Father's Day on June 16th. All Dad's swim FREE with a paid child admission. Lake hours for the day are 11 a.m. - 6 p.m. Regular admission fees apply.

FIESTA ON THE BEACH

THURSDAY, JUNE 20 (5 P.M. - 8 P.M.)

No time to siesta it's time to fiesta. We will be having a pinata on the beach along with other fiesta theme games. Come out for reduced priced swimming from 5-8pm as part of our Food Truck Rally in the park.

CHRISTMAS IN JULY

THURSDAY, JULY 25 (5 P.M. - 8 P.M.)

Come deck the halls at the lake!!! Holiday festivities include a Santa belly splash contest, a snowball toss, and a few other fun Christmas games. Reduced price swimming from 5-8pm as part of our Food Truck Rally in the Park.

SPLISH SPLASH END OF SUMMER BASH

THURSDAY, AUGUST 8 (5 P.M. - 8 P.M.)

Come join us for an end of summer evening of fun! We will end this summer in style with a pair of free kids sunglasses for our first 100 guests starting at 5pm.

EARLY CLOSING POLICY

Ashwaubomay Lake will be closed if the air temperature is below 65° and/or there are fewer than 5 (five) patrons in the lake area.

ASHWAUBOMAY LAKE



WEEKLY ACTIVITIES AT THE LAKE

SANDCASTLE CONTESTS

Compete against others for title of "Best on the Beach!" Create your own unique and creative sand design and enjoy a fun filled day at the beach. Winners will receive a ribbon from our treasure chest and have their castle's picture posted on the Ashwaubomay Lake Facebook Page. Contests are held **WEDNESDAY AND SUNDAY AFTERNOONS**. Judging will begin at 3 p.m. Bring your own buckets.

CORCL TIME

Ever heard of a corcl? They are fun little round kayaks and we have them at the Lake! Join us on **TUESDAYS AND THURSDAYS** to try them out!

SPECIAL GROUP RATES

How would you like to hold your company picnic/special event at Ashwaubomay Lake. Now you can! Groups can rent Ashwaubomay Lake for exclusive use.

RENTAL TIME AVAILABLE:

The Ashwaubenon Parks, Recreation & Forestry Department will provide:

- All the necessary personnel
- All Lake rentals include free use of the open-air shelter adjacent to the café
- Café open for snacks or dinner (Additional fee required)

All facility rules apply during group use for the safety of everyone.

Call for availability



BECOME A FAN
of Ashwaubomay Lake on Facebook. Stay informed of special events, closing status, view sand castle photos and more!



2024 DOGGIE DIP

As the dog days of summer come to end its time to let our canine friends take the plunge. The day after the "human swimming season" is over we will be turning the lake over to our 4 legged friends for a 3 hour doggie dip. Bring Fido and his/her favorite toy over for a swim in the lake. A portion of the proceeds from this event will benefit the Wisconsin Humane Society. There will be concessions available provided by the Wisconsin Humane Society.



DOGGIE DIP RULES:

1. Only family friendly dogs are allowed.
2. Owners **must provide paper documentation** of their dog's **current** rabies vaccination certification (with the expiration date) the day of the swim or they will **NOT** be allowed inside the lake area. Dog tags will not work as proof of vaccination.
3. Puppies must be **at least 16 weeks old** and be vaccinated for rabies.
4. Owners are responsible for their dogs at **ALL** times, including cleaning up after their dogs. WHS will have doggie-doo bags available.

SATURDAY, AUGUST 17

Location: Ashwaubomay Lake
Time: Noon – 3:00 p.m.
Fee: \$5 per dog



PARKS & FORESTRY



TREE/BENCH DONATION PROGRAM

The Village of Ashwaubenon Parks, Recreation & Forestry Department offers a dignified Tree and Park Bench Donation Program. This program will provide individuals, families and organizations a way to remember a loved one, honor someone special or recognize a special achievement.



A selection of species is offered to allow participants to choose a tree to suit their individual tastes. To ensure optimal growth, trees will be planted by Village Staff at the appropriate time of year (typically May and October as weather permits). Tree donors will also be recognized on our donor plaque which is displayed at the Village Hall.

The bench style is a six foot long, steel Du Mor bench and can be ordered in a green or black polyester powder finish. The bench also comes with a 2" x 10" plaque that is set into the bench to create a personalized message commemorating the donation. Benches will be installed in summer or fall on a concrete slab in a mutually agreeable location.

If you would like to further discuss specific details of the program, a Parks, Recreation and Forestry staff member will be happy to meet with you to answer any questions. Please contact the Department Office at 492-2331 to discuss options.

SPONSORSHIPS/PARTNERSHIPS/DONATIONS

The Parks, Recreation & Forestry Department has many "needs" for our community programs and facilities. We always welcome inquiries from individuals and businesses on how we can form a partnership, or recognize an individual / group through a facility donation or event sponsorship.

Some current & past ideas include:

- Ashwaubenon Blast/Family Food Truck Rally sponsorship
- Summer concert sponsorship
- Park bench or shelter donation
- Playground equipment donation
- Senior citizen events, such as "Breakfast with the Experts" or socials
- Summer playground program special event sponsorship
- Playground program games & athletic equipment donations
- Drinking fountains (bubblers)
- Family events (Easter Egg Hunt, movie nights, etc..)
- Ashwaubomay Lake special event sponsorship
- Tree donations

If you have an idea, we'll be happy to sit down & listen. Please contact the Director of Parks, Recreation & Forestry at 920-492-2331 to discuss.

	ACRES	BASEBALL FIELDS	SOFTBALL FIELDS	BASKETBALL COURTS	SLEDDING HILL	HORSESHOE PITS	SOCCER	TENNIS	PLAYGROUND AREA	PICNIC AREA	SHELTER	VOLLEYBALL COURT	SWIMMING LAKE	WALKING & BIKING TRAILS	SKATEBOARD PARK	PICKLEBALL COURT
Village of Ashwaubenon Parks																
Argonne	8.07						X		X	X						
Ashwaubomay	83.50	X				X	X		X	X	X	X	X	X		
Ash. Sports Complex	42.20		X	X			X	X	X	X	X			X	X	
Bill Diamond Fields	6.00						X									
Canterbury	.80			X				X	X	X	X					
Fort Howard	12.90			X			X	X	X	X	X			X		X
Gillis	1.50	X							X	X						
Hidden Valley	19.01									X	X	X		X		
Klipstine	15.03			X					X	X						
Lois Aubinger	.64								X	X	X					
Mike Vann	3.17			X		X			X	X						
Pioneer	16.58		X	X			X	X	X	X	X					
Sand Acres	7.1			X	X				X	X	X					
Sherwood Forest	45.60									X				X		
Skyline	1.43			X					X	X	X					
Smith	3.99	X	X	X				X	X	X	X					
Valley View	8.00								X	X						
Veteran's	.83															
Waterford	3.80			X					X	X	X	X		X		

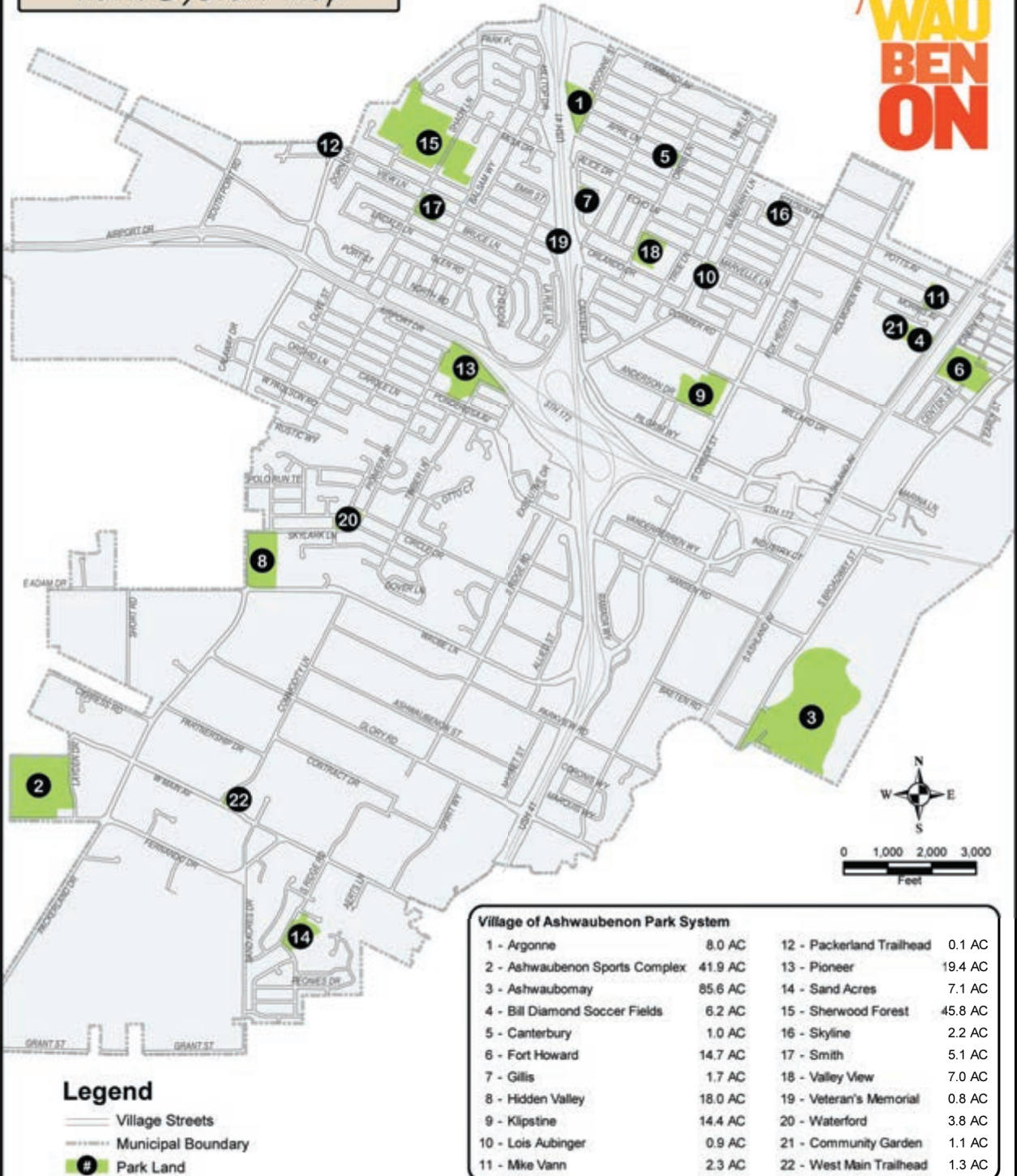
* Memorial Park – Monument site to honor local Veterans *

MAP OF PARK SYSTEM



Date: 2/26/2015

Village of Ashwaubenon Park System Map



Path: H:\arcview\projects\arcgis 10\projects\park & rec\Park Map for Brochure2015.mxd

Francine Roberg, GIS Coordinator, Village of Ashwaubenon, 920.492.2308, froberg@ashwaubenon.com



EMERALD ASH BORER

WHAT CAN I DO?

- Keep up to date on EAB (see link below)
- Don't move Firewood
- Remove infested trees and dispose or utilize properly
- Decide if you will chemically treat healthy ash trees
- Inspect ash trees annually
- Replant with other species

CONSIDER YOUR OPTIONS...

Do you protect your ash tree?

Ash trees can be saved if they are chemically treated. Trees may need to be treated throughout their lives. If your ash tree is healthy and is enhancing your landscape, it may be worthwhile to protect your tree. Healthy trees are valuable and provide many benefits such as home energy savings, property value, shade and reducing storm water runoff. For more info on chemically treating ash, see www.emeraldashborer.wi.gov Click on the Homeowners tab for further links on tree or insect identification as well as chemical options.

Should I remove my ash tree and replace it?

Trees which are unhealthy, have structural problems, are planted in poor sites and are not important to the landscape, and/or showing many outward signs of EAB infestation should be considered for removal and replacement. EAB infested trees left untreated will die and quickly become a liability due to limbs breaking off. Additionally, trees killed by EAB are more costly to remove since they shatter when hitting the ground.

Who should I hire to treat and/or remove my ash tree?

Work with a professional arborist. Hire an arborist that is insured, preferably one that is an International Society of Arboriculture Certified Arborist. If you hire an arborist to chemically treat your tree, make sure they are a WI Certified Pesticide Applicator. Get a couple of estimates from different arborists.



EAB gallery with exit hole



Flecking of bark caused by a woodpecker looking for EAB larvae

RANDOM EAB FUN FACTS:

- First discovered in SE Michigan in 2002, but is suspected to be present for 10-12 prior to its discovery.
- Discovered in WI in 2008, Brown County in 2009 and Ashwaubenon on January 26, 2017.
- Currently found in 36 US States and 5 Canadian Provinces.
- The Village currently has 290 remaining inventoried ash trees... an 81% reduction since 2004.
- Now considered the most destructive forest pest ever seen in North America surpassing Dutch Elm Disease that was rampant in the 60's and 70's.
- Only affects ash (*Fraxinus*) species and its cultivars; mountain ash (*Sorbus*) is not a true ash and is unaffected
- Wisconsin's has an estimated 720 million forest land ash trees
- Firewood movement is the primary means for EAB movement to new areas

Moving forward...

- Private property owners will be responsible for managing trees on their property
- Village will only manage trees located on public property, however we currently will not be chemically treating ash street trees
- We encourage private property owners to treat both their private and street trees for EAB and request they contact the Village so we can track any public trees being treated in our inventory
- Village Staff can provide technical assistance for private property owners to manage EAB on their property



Additional EAB information can be found at: www.emeraldashborer.gov



EMERALD ASH BORER

DON'T FORGET TO PROTECT YOUR ASH...

The Village of Ashwaubenon encourages residents to chemically treat both private and public ash trees on a preventative basis to prevent being killed by EAB. A number of effective options are available, with many able to be done by homeowners while others require professional applicators. Please remember to complete a FREE Village of Ashwaubenon "Tree Work – Permit Application" before treating any street trees. Several reasons for this are:



- Ensuring trained, licensed contractors are complying with WI State laws and regulations and that Restricted Use Pesticides are only be applied by professionals
- Record treatments in our inventory to guide future management decisions

Large-Scale Ash Tree Removal Continues

In March of 2020, the Village Board approved funding for a 5-year plan to manage Emerald Ash Borer (EAB) on public properties in Ashwaubenon. The plan outlines a comprehensive approach to manage the adverse impacts of EAB in our community on public right of ways, parklands, and other Village owned properties. A major component of this plan is to remove approximately 1056 inventoried ash trees in our neighborhoods and parks. Private contractors will be utilized for this work and after removing the trees they will also provide stump grinding and site restoration. Replacements trees will be offered, if appropriate for the site, at no cost to residents choosing to have a new tree planted. Below is the current schedule for ash removals, with the primary project for 2024 roughly being the southern half of the Village west of US Hwy 41.



Project Areas for 2024:

- 185 street trees in management areas 12 & 13
- Valley View Park
- Waterford Park
- Dutchman Creek Conservancy
- Hansen Road Greenspace Area
- US 41-Adjacent to Veterans Park

PARKS & FORESTRY



STREET TREES AVAILABLE TO RESIDENTS



The Neighborhood Street Tree Planting Program will once again be offered in the fall of 2024. The planting program is a partnership between the Village and its residents to promote the benefits of tree-lined streets. The resident pays for the tree while planting and maintenance will be the Village's responsibility.

A selection of suitable trees will be sent to interested residents with an order form in early fall and planting will be done in late October or early November.

Interested residents are asked to call the Village Forester before **August 30, 2024** to be included in the program.

BENCH DONATIONS

The Village would like to thank the following families for 2023 bench donations in our park system:

- The family of Steve Jacobs, placed in Ashwaubomay Park
- The family of Chuhan Ram Bhatoya in Klipstine Park.

Your donation will benefit our community for years to come.



TDS® IS BUILDING A FIBER NETWORK IN ASHWAUBENON

TDS, based out of Madison, is continuing to build a fiber-optic network to bring super-fast internet, plus TV and phone services to Ashwaubenon.

What makes fiber different? Because it uses pulses of light to deliver information, a fiber-to-the-home network offers substantially faster upload and download speeds—plus more bandwidth—than other technologies.

Construction on the project is scheduled to resume this spring and will become available to customers in phases. Watch for information on door hangers and in your mailbox as build activity gets underway.

For more information, visit **TDSFiber.com/construction**. TDS will also be hiring locally to fill new positions. To view job opportunities, visit **TDSFiber.com/careers**.

*"The best time to plant a tree was twenty years ago. The second best time is now."
- Chinese Proverb*



VILLAGE CELEBRATES ARBOR DAY

Thirty-two trees were provided by the Packer's Green Team "First Down for Trees" project in 2023 to help increase the species diversity within Ashwaubenon's urban forest.

The Green Bay Packers Green Team and Wisconsin Public Service initiated **First Downs for Trees** as a joint effort with Brown County communities, the WI DNR, Essity and Green Bay Packaging to promote the planting of trees.

The program complements the Packers' recycling and landfill diversion programs at Lambeau Field by targeting the carbon emitted by the team's air charters to road games, which is approximately 450 tons in a year.

Since 2011, 6,389 trees have been planted through the program, providing total lifetime benefits of nearly \$31 million through stormwater runoff reduction, CO2 reduction, energy savings, air quality improvement and property value increase.

The Village of Ashwaubenon Parks, Recreation and Forestry Department thanks our generous partners to make these projects a HUGE success!!!



FIRST DOWNS FOR TREES

PARKS & FORESTRY



VOLUNTEER OPPORTUNITIES OFFERED

The Parks, Recreation and Forestry Department currently has several volunteer based programs designed for citizen's to take an active role in their community.

ADOPT A GARDEN

Volunteers plant the gardens beneath the park signs with the design and flowers of their preference. Adoptees are asked to plant, weed and maintain the beds throughout the growing season with Village Staff providing watering and fertilization.

*****The only garden that is currently available for adoption is Bill Diamond Fields.**



ADOPT A PARK

Involves picking up litter from your selected park a minimum of three times per year. Trash bags and pickup afterwards can be provided by Village Staff. Each group's efforts will be recognized with a sign to thank the organization or family for helping keep "their" park looking good.

***** Parks currently available for adoption in 2024 include: Ashwaubomay and Bill Diamond Fields in addition to many trailways located throughout the community.**

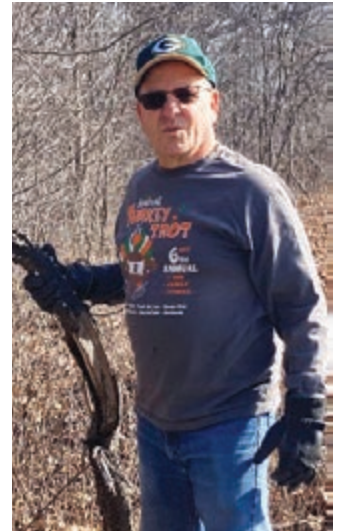
If you are interested in becoming involved in any of these programs, please contact the Village Forester at the Parks, Recreation & Forestry Department for assistance.

RESIDENT MAKES A DIFFERENCE AT HIDDEN VALLEY PARK

Long time Ashwaubenon resident Carl Fisher reached out the Department last summer about Hidden Valley Park. Carl, a retired Schneider National employee, offered his experience and passion to maintain the trails at Hidden Valley. Using his previous experience working in Baird's Creek and the Ice Age Trails, Carl quickly learned to ID the invasive species such as buckthorn and honey suckle that were growing into the trailway. This past fall, Carl cleared out 300 yards of trail on the north side of the Park. Village staff from the Parks and Public Works Departments helped with chipping and removal of the larger trees.

This year, Carl has plans to work the southern half of the park in a similar manner. If you would like to assist Hidden Valley Park contact our Department and we can get you in touch with him!

THANK YOU Carl for making Ashwaubenon are great place to live!!! Your efforts are appreciated!



Thank you!

RESIDENTS ASKED TO HELP PREVENT SPREAD OF OAK WILT



To minimize the potential for an oak wilt infection, the Village of Ashwaubenon has adopted an ordinance to **PROHIBIT THE PRUNING OR WOUNDING OF OAKS FROM APRIL 1st TO JULY 15th**. This policy applies to public as well as private trees. Contact the Village Forester for additional information.

VILLAGE SERVICES

COMPOST SITE



Our Compost site is open year-round, 24 hours a day, to **VILLAGE RESIDENTS ONLY**. Find access to the site from Cormier Road to Collaer Court on the North side of the street between Holmgren Way and Ashland Ave.

GIS DEPARTMENT MAPS & APPS

Experience a virtual view of the Village of Ashwaubenon. With Ashwaubenon GIS Apps, use various interactive maps to view your property lines, air photos, dimensions, zoning, floodplains and more! The GIS Department also publishes many maps that may be downloaded as PDF's. These include construction maps, public works solid waste route maps, wards maps, street maps, zoning maps & several more! Visit www.ashwaubenon.gov and near the top of the homepage, click 'Maps & Apps'. Try it out today!



ASHWAUBENON BIKE TO SCHOOL DAY

Ashwaubenon has set Wednesday, May 8, 2024 as "Bike to School Day". This national program is in cooperation with the League of American Bicyclists' National Bike to School Month! Watch for more information at your local school. **All Ashwaubenon School District students riding their bike to school on this day will receive a free pass to Ashwaubomay Lake!**

WHY PARTICIPATE IN BIKE TO SCHOOL WEEK?

- IT'S FUN! Biking to work builds morale, encourages camaraderie, and is a great way to get active in your community.
- IT'S HEALTHY! Active employees and students are more alert, take fewer sick days and are more productive
- IT'S GREEN! Biking reduces your carbon footprint, reduces traffic congestion, and can save you \$\$!



BIKE TO SCHOOL DAY IS WEDNESDAY, MAY 8TH

**"We challenge you to try it.
We think you'll like it!"**

~ The Bicycle & Pedestrian Advisory Committee.

PROPER MAILBOX HEIGHT

During the winter season, unfortunately many mailboxes are damaged during the snow removal process. The diagram shows the correct installation height for the snow plows. **Mailboxes not properly installed are at risk of damage at owner's expense replacement.**

The door of the mailbox should be 6"-8" from the face of the curb. →

42" from the top of the curb to the bottom of the box →



VILLAGE SERVICES



FAQ REGARDING THE PUBLIC WORKS DEPARTMENT

Important information from the Ashwaubenon Street Department.
Contact the Public Works Department at 492-2310 with any questions.

GARBAGE AND RECYCLING:

Garbage carts and recycle carts must be kept apart for pickup. Put one on each side of the driveway or keep at least 3 feet between the carts. Carts should be placed at the curb by 6 a.m. on your garbage day and after pick up all carts must be placed out of sight.

****Due to trip and fuel costs, the Village is unable to make return trips for containers not placed out to the street on time the morning of your designated day.**

OPTIONS: If you notice that the residents across the street from you have not been picked up you may put your container on the opposite side for pick up.

STORMWATER PONDS: Several Village Storm Water Ponds have been constructed in recent years. On going maintenance activities will include spraying of weeds several times during the summer months along with algae treatment, if needed.

RECYCLING: May be brought to the Brown County Resource Recovery Center located at 2561 S Broadway. The hours for the public can be found @ browncountyrecycling.org. Material must be placed inside the building through the large window in between the two large overhead doors.

FIRE WOOD

Cut/split fire wood is available for \$70.00 a face cord at the Village Garage. (8' x 4' x 18"). Payment shall be made at Village Hall.

HOUSEHOLD HAZARDOUS WASTE

May be dropped off at the Brown County Resource Recovery Center located at 2561 S. Broadway on Thursdays from 12 p.m. to 6 p.m. and Tuesdays from 9 a.m. to 3 p.m.. The number to call is 920-492-4950.

LAWN MAINTENANCE ORDINANCE 11-1-21(F)

(3)(a) Any undeveloped parcel one acre or larger in size shall destroy noxious weeds and cut long grass and vegetation to six inches in height within the right-of-way and within 20 feet of any abutting developed property. The remaining property shall be maintained to a height of 12 inches or less.

(3)(b) Any parcel with improvements upon it or a parcel less than one acre in size shall destroy noxious weeds and cut and maintain long grass and vegetation to a height of six inches or less.

(4)(a) Enforcement – Abatement. Any property owner in violation of this section shall be provided written notice by the Code Enforcement Officer or his/her designee by mailing to the property owner or by posting written notice on the door of the property in violation. The written notice shall request compliance within 48 hours of mailing or posting of the notice. If such violation is not corrected within 48 hours, the village will authorize and conduct action to bring the property into compliance and bill the property owner for such efforts under Wis. Stat. § 66.0627.

2024 Election Dates:

**Tuesday, April 2, 2024 Spring and
Presidential Preference Election**

**Tuesday, August 13, 2024
Partisan Primary**

**Tuesday, November 5, 2024
General Election**

**The Clerk's Office will be open
Friday afternoons on:**

3/22, 3/29, 8/2, 8/9, 10/25, 11/1

**To confirm your polling
location go to myvote.wi.gov**

VOTER REGISTRATION

Ashwaubenon residents may register to vote at the Office of the Clerk any time before 5 p.m. the Friday before Election Day, by mail 20 days prior to Election Day or online @ myvote.wi.gov. Residents may also register on Election Day at their respective polling place. When registering ensure proper proof of residence is provided. As a reminder, when voting on Election Day, a government issued PHOTO ID is required.

ABSENTEE VOTING

If you are unable to get to your polling place on Election Day, you can also vote by Absentee Ballot. Requirements to vote absentee include being 18 years of age; citizen of the US; are not currently serving a sentence including probation or parole for a felony conviction and not otherwise disqualified from voting; registered to vote; and by making an application in writing or go to myvote.wi.gov. By State Law, absentee voting in the Clerk's Office is restricted to 14 days before an election and ends at 5 p.m. the Friday before Election Day. Contact the office of the Clerk at 920-492-2302.

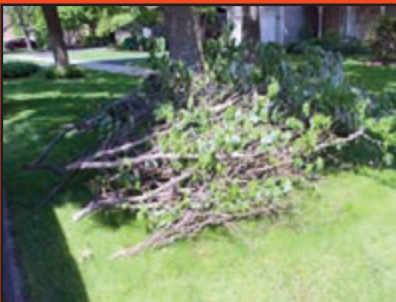
VILLAGE SERVICES



CURBSIDE BRUSH COLLECTION

The Village of Ashwaubenon Public Works Department completes a continuous collection rotation of brush pick-up through the Village during the spring, summer and fall months. The collection progresses from the north end of the Village and cycles through to the south end of the Village generally in a 3-week timeframe.

EXAMPLES OF ACCEPTABLE BRUSH PILES FOR VILLAGE PICK-UP



BRUSH PICKUP GUIDELINES

In order for the Village to provide timely and efficient collection of brush, a number of guidelines and illustrations are provided below to help property owners correctly place brush curb side for this service:

- Brush collection is meant for residential tree/brush trimming completed by **VILLAGE RESIDENTS**. If a contractor is hired to complete tree/brush removal, the contractor must cut, chip, remove and dispose of all material.
- Brush must be placed at the edge of the roadway or curblane with the cut sections facing the street and all limbs facing the same direction. Limbs cannot exceed 6" in diameter at the cut section and must be trimmed down to a maximum length of 15'.
- Do not place brush in the roadway, curb, flowline, ditches or on sidewalks. Keep all brush away from fire hydrants, electrical poles, low hanging wires, fences, mailboxes or other objects in the yard.
- Do not mix brush with other yard waste (grass clippings, leaves, garden waste, paper/plastic, etc.) nor put in garbage cans or bags.
- Roots/stumps/large trunk sections will not be picked up but Village residents can bring these items to the Village Yard Waste Site located on Collaer Court.

EXAMPLES OF UNACCEPTABLE BRUSH PILES FOR VILLAGE PICK-UP



Brush set out to the street that is not following the above guidelines will not be collected by the Village as part of its brush collection program and will be subject to enforcement action under Municipal Code Section 18-2-33.

VILLAGE SERVICES



Renew Our Waters

Every choice counts.

KIDS CAN HELP TOO!

There are lots of things kids can do to help keep our rivers and lakes clean.

Have you ever thought about where rain goes after it lands on your house or driveway? Rain drops roll down your driveway and into the road. Once in the road, rain enters the storm drain - the grates that are in city streets.

Do you know what happens to things that enter the storm drain? Water or any thing else that enters those drains travel through pipes that empty right into our rivers and lakes!

You can help clean up our local rivers and lakes by making sure that only rain goes down the storm drain.

You can help clean up our local rivers and lakes by making sure that only rain goes down the storm drain!

CLEAN UP AFTER YOUR PET!

Pet waste is not only gross to find in yards or on sidewalks, it carries bacteria and germs that cause beach closings in the summer. To keep our waters clean, pick up after your pet often. Even waste in your backyard can pollute local waters. Bring a small plastic bag with you on walks and pick up after your dog.

HELP WITH THE YARD

Grass clippings and leaves from our yards are causing our lakes and rivers to turn green! You can help by sweeping grass clippings off your driveway and sidewalk back onto your lawn after your mom or dad mows the grass. You can also help your dad and mom rake up the leaves in your yard in the fall!

GET SOME EXERCISE

You may have heard that cars and trucks can cause air pollution but did you know that driving cars and trucks can also affect water? Oil, grease and dirt that fall from our vehicles when we are driving are washed into storm drains and into our rivers and lakes. One way to help clean up water is to drive less. Instead of asking for a ride, ask your mom or dad if you can walk or bike with them to a friend's house or the park!

**Most importantly, never put anything down the storm drain. The fish and frogs and especially your friends don't like to swim with garbage!
Only rain should go into the drain!**

Stormwater is rain or snowmelt and water from things people do, like overwatering the lawn. As water makes its way to the storm drain it picks up pollutants like oil from car leaks and bacteria from pet waste. When we choose products carefully and dispose of products properly, we can greatly reduce the amount of pollution that enters our local waters through runoff.

Untreated runoff is the biggest threat to our nation's water quality, according to the U.S. Environmental Protection Agency. Let's make the small, important changes that will reduce that threat and improve water quality and our lives!

Realize

What touches the ground enters the water

Renewourwaters.org

Northeast Wisconsin Stormwater Consortium
P.O. Box 1861 Appleton, WI 54912 | 920.915.5767



FIRE SAFETY TIPS

With more daylight, many people feel a renewed sense of energy and begin to tackle those projects around their homes they putt off during the darker winter months. Spring cleaning is an important part of keeping your home and family safe from fire, and can be overlooked. This spring, make fire safety part of your routine to stay on top of fire prevention in your home, whether you own your home or rent. Add these tips to your weekend to-do's, and enjoy the peace of mind that comes with prevention.

CLEAN YOUR GRILL

Some families grill year-round, while others break it out again in the spring and summer. While your grill sits over winter, grease and build-up can harden and make it easy for fire to catch. Before firing it up this spring, inspect it for damage and remove any trapped grease or debris that may have lingered there. A thorough cleaning will help avoid preventable grill fires in the future.

SMOKE ALARMS

Be sure to check your smoke alarms and grab extra batteries at the store as needed. If your smoke alarm is older than 10 years, it needs to be replaced. Test your smoke alarms throughout the house, making sure you have one in every area as designated by your local fire department and zoning./building codes. Test your alarms regularly (once a month is recommended).

KITCHEN / COOKING

Cooking is the number one cause of home fires, according to the U.S. Fire Administration. Whether you're frying, grilling, broiling or boiling, stay in the kitchen and never leave a hot stove unattended. When you're tackling kitchen cleaning this spring, remove any items that may be on or around the stove that could catch fire. Pro tip: Keep pot and pan handles towards the back of your stove when in use to avoid being bumped.

SAFE HOME HEAT

The second leading cause of home fires, fires caused by home heating, can be prevented with a few simple steps according to NFPA. Practice the three-foot rule, ensuring anything that can burn is at least three feet away from heating units in your home, including wood stoves, portable heaters and radiators.

CANDLES

According to the National Fire Protection Association (NFPA), candles were a cause of more than 7,600 reported home structure fires between 2014 and 2018. The good news is that most candle fires are preventable. Keep candles away from flammable materials such as curtains, bedding, home decor, books or dried plants/flowers. Make sure they have a stable location and never leave them unattended.

ESCAPE PLAN

An escape plan for your home is a great thing to revisit during spring and at least twice per year. Your plan should have two ways out of each room and a designated safe meeting spot outside of the home where everyone in the household know to go in the event of a fire.

PUBLIC SAFETY

BIKE RODEO

JOIN US AT THE ASHWAUBENON COMMUNITY
CENTER TO LEARN ABOUT BIKE SAFETY!!

TUESDAY, JUNE 18, 2024 | 12:00 P.M. - 2:00 P.M.

This is a FREE event for ages 4 - 12 years old. Children must have a chaperone
at all times.

PEDESTRIAN SAFETY

- Walk on sidewalks
- Keep alert
- Locate well-lit areas
- Walk facing traffic
- Cross streets at cross
walks or intersections
- Be visible at all times

DRIVER AWARENESS

- Look out for pedestrians
at all times
- Yield to pedestrians at
crosswalks
- Be aware of your
surroundings
- Watch for bicyclists when
opening doors

TIPS ON HOW TO PREVENT IDENTITY THEFT

BE AWARE OF SURROUNDINGS ****

When dealing with your PINs, passwords, and
social security number



CHANGE YOUR PASSWORDS

Make sure they are creative, varied, &
changed frequently

TRUST YOUR INSTINCTS

Exit out of fishy emails or any suspicious
phone calls asking for personal information



REPORT LOST PLASTIC

Immediately cancel any lost credit cards, debit
cards, checks, or ID cards and have them reissued

GO PAPERLESS AND SHRED AWAY

Have statements sent via email or accessed online
& shred any papers with personal information on them



REVIEW FINANCIAL STATEMENTS

Check accounts and credit reports frequently so you
can catch unauthorized or suspicious activity

PREVENT CRIME AT HOME



Use an USPS
mailbox with a lock
or mail checks



Leave outside lights
on at night

Keep
doors
locked



Install motion
lights & security
cameras to monitor
your property

Ensure that windows are
locked, especially on first story



Plant shrubs with thorns near
windows to deter burglars

REGISTRATION INFORMATION



REGISTRATION BEGINS:

VILLAGE RESIDENTS: MONDAY, APRIL 1 @ 8:00 A.M.

NON-RESIDENTS: MONDAY, APRIL 8 @ 8:00 A.M.

WALK-IN REGISTRATION

Walk-in registrations will be accepted at the Parks & Recreation Department during regular business hours.

MAIL-IN REGISTRATION

Mail your completed registration form and check payable to: Ashwaubenon Parks & Recreation Dept. 900 Anderson Drive, Ashwaubenon, WI 54304

DROP BOX

A 24-hour depository box is located through the front entrance of the Ashwaubenon Community Center. Place in a sealed envelope marked Park & Rec Registration.

FAX 492-2341

Credit Card (MasterCard, Visa & Discover only). payment information **MUST** accompany all fax registrations or they cannot be processed.

ONLINE
ashwaubenon.gov

NON-RESIDENT POLICY

Department programs and activities are supported by village property taxes. Non-Residents are required to pay their "fair share" to support activities. Program fee for Non-Residents is an additional \$15.00.

CLASS CANCELLATIONS

Please don't wait until the last minute to sign up. Activities will be canceled if there are insufficient registrations. Notifications of cancellations or schedule changes will be made as soon as possible.

PROGRAM PARTICIPANT AGES

The age of the child at the start of the program will be used to determine program eligibility.

REFUNDS

If a participant cancels a registration \$5.00 will be charged for processing, with the balance of the activity fee being refunded. Cancellations may occur up to two days before an activity unless there is a registration deadline. NO REFUNDS will be given after an activity has started. Full refunds will be given when the Department cancels classes or makes schedule changes. Please note: A \$5.00 fee will be charged if a participant switches from one class to another.

REGISTRATION FORM - MAIL/DROP-OFF/FAX

Mail/Drop off to: Village of Ashwaubenon Parks, Recreation and Forestry, 900 Anderson Drive, Ashwaubenon, WI 54304 Fax to: 920-492-2341

1. Registering Adult (Parent or Guardian), please PRINT AND FILL OUT FORM COMPLETELY

Last Name _____ First Name _____
Address _____ City / Zip _____
Home Phone _____ Work / Day Phone _____ Cell Phone _____
E-Mail Address _____ Special Considerations (medications, disabilities, etc.) _____
Emergency Name & Phone (if no one answers to the above numbers) _____ Relationship to registrant(s) _____
If more than one parental home or other special circumstance, give name, address home/work phone below: _____

2. Fill in programs for each participant

Class Number	Class Name/Time	Participant Last Name	Participant First Name	M/F	Date of Birth	Grade Level	Fee
							\$
							\$
							\$
							\$

3. Terms and Conditions: I, as the participant or parent/legal guardian of the above named child, hereby give permission for his/her/my participation in the above listed activity(ies). I further authorize, without my prior approval, the rendering of any emergency medical treatment that may be necessary due to his/her/my participation in the activity(ies). I hereby, for myself, my child, my heirs, executors and administrators, waive and release any and all rights and claims for damages I or my child may have against the representatives, successors, and assigns for any and all injuries suffered by myself or my child at any activity sponsored by these groups. In addition, by registering for the program I have granted the Village of Ashwaubenon permission to use my photograph for promotional purposes unless otherwise noted.

Participant or Parent/Guardian Signature _____ Date _____

4. Payment Information Payable to Village of Ashwaubenon

☐ Visa ☐ MasterCard ☐ Discover ☐ Check/Check No. _____ ☐ Cash
Card Holder Name _____ Payment Amount \$ _____ Credit Card Number _____
Expiration Date _____ Security Code _____ Authorized Signature _____

ASH
WAU
BEN
ON

REGISTRATION FORM - MAIL/DROP-OFF/FAX

Mail/Drop off to: Village of Ashwaubenon Parks, Recreation and Forestry, 900 Anderson Drive, Ashwaubenon, WI 54304 Fax to: 920-492-2341

1. Registering Adult (Parent or Guardian), please PRINT AND FILL OUT FORM COMPLETELY

Last Name _____ First Name _____
Address _____ City / Zip _____
Home Phone _____ Work / Day Phone _____ Cell Phone _____
E-Mail Address _____ Special Considerations (medications, disabilities, etc.) _____
Emergency Name & Phone (if no one answers to the above numbers) _____ Relationship to registrant(s) _____
If more than one parental home or other special circumstance, give name, address home/work phone below: _____

2. Fill in programs for each participant

Class Number	Class Name/Time	Participant Last Name	Participant First Name	M/F	Date of Birth	Grade Level	Fee
							\$
							\$
							\$
							\$

3. Terms and Conditions: I, as the participant or parent/legal guardian of the above named child, hereby give permission for his/her/my participation in the above listed activity(ies). I further authorize, without my prior approval, the rendering of any emergency medical treatment that may be necessary due to his/her/my participation in the activity(ies). I hereby, for myself, my child, my heirs, executors and administrators, waive and release any and all rights and claims for damages I or my child may have against the representatives, successors, and assigns for any and all injuries suffered by myself or my child at any activity sponsored by these groups. In addition, by registering for the program I have granted the Village of Ashwaubenon permission to use my photograph for promotional purposes unless otherwise noted.

Participant or Parent/Guardian Signature _____ Date _____

4. Payment Information Payable to Village of Ashwaubenon

☐ Visa ☐ MasterCard ☐ Discover ☐ Check/Check No. _____ ☐ Cash
Card Holder Name _____ Payment Amount \$ _____ Credit Card Number _____
Expiration Date _____ Security Code _____ Authorized Signature _____

ASH
WAU
BEN
ON

CO-SPONSORED ORGANIZATIONS



WHAT IS A CO-SPONSORED ORGANIZATION?

The Ashwaubenon Park Board co-sponsors seven youth organizations. The organizations are Ashwaubenon Youth Baseball (AYB), Ashwaubenon Youth Soccer (AYSA), Ashwaubenon Girls Softball (AGSA), Ashwaubenon Wrestling Club (AWC), Ashwaubenon Special Children's, Ashwaubenon Swim Club (ASC) and Ashwaubenon Youth Football.

As a co-sponsored organization the village provides each group with the following:

- 1) Funding for equipment and/or wages.
- 2) Free facility use (ball fields, gym, pool, etc.)
- 3) Upkeep and grooming of all facilities
- 4) Insurance coverage
- 5) Free use of community center for their meetings
- 6) Provide a staff liaison to attend co-sponsored board meetings.
- 7) Provide a staff liaison to help with facility or program concerns
- 8) Plus miscellaneous other items

In return the co-sponsored organization is responsible for the following:

- 1) Day to day operations of their organization
- 2) Handle all registration and money
- 3) Provide contact person to department and all participants
- 4) Have a governing board that meets on a regular basis
- 5) Provide budget information to department each year
- 6) Follow participation rules - equal playing time for all participants
- 7) Follow Parks and Recreation Department philosophy in program - skill development focus, equal play and opportunities for all participants and focus on fun and skills rather than "winning"
- 8) Plus miscellaneous other items

This unique relationship seems to work and provides for low cost, well-run recreation programs for hundreds of children each year.

All co-sponsored organization websites may also be found on the Village website: ashwaubenon.gov Click on Departments, then Parks & Recreation; then on the right side under Quick Links, click on co-sponsored groups!

ASHWAUBENON YOUTH FOOTBALL

PRESIDENT: VALERY DETERVILLE 360-3001

The Youth Football program is a tackle program open to all 7th and 8th grade Ashwaubenon residents. This program teaches the fundamentals of football, basic tackling, and teamwork. League play is through Great Lakes Conference. More information is available on the youth football website: www.ashwaubenonlions.com



ASHWAUBENON SWIM CLUB (ASC)

PRESIDENT: TBD

The Ashwaubenon swim club is a year-round program designed for any youth who can swim one (1) pool length front crawl and back crawl. Participants may join at any time. The club's major goal is to improve skills, endurance and technique in the competitive swim strokes.



Practice schedules vary throughout the year. Participants are divided into six groups depending on their age and skill level. All practices are held at the high school pool.

www.asc-wi.com.

Monthly parent board meetings are held in the small commons at the high school.

ASHWAUBENON'S SPECIAL CHILDREN'S PROGRAM

PRESIDENT: TBD 492-2331

Students with physical and cognitive disabilities are able to participate in the Ashwaubenon Special Children's Program. The program is for students of varying degrees of abilities and is an 8 week program running June 10-August 15, 2024 (break for 4th of July week). held at Parkview Middle School. The program is in partnership with the Ashwaubenon School District and the Ashwaubenon Parks, Recreation & Forestry Department. Participants will be involved in theme based activities each week, with an emphasis on community activities and field trips. Teachers and aides can work one on one with participants. This allows students to maintain skills attained during the school year throughout the summer and develop peer and community interactions as well. There are two 4 week sessions during the summer (allowing for both summer school and program participation) Need based scholarships may be available. Bus pick-up and drop-off from a students' residence is part of the program. For more info, please contact Tammy Lampereur @ the school district (492-2405 X 1010)

ADDITIONAL CO-SPONSORED PROGRAMS

- Ashwaubenon Girls Softball Association (AGSA)
Contact: Arlie Allen 284-8739
- Ashwaubenon Youth Baseball, Inc. (AYB, Inc.)
Contact: Donovan Miller 419-8298
- Ashwaubenon Youth Soccer Association (AYSA)
Contact: Melody Escoto 593-4452
- Ashwaubenon Wrestling Club (AWC)
Contact: Brian Wallace 360-2866

Village of Ashwaubenon
Parks, Recreation & Forestry Department
900 Anderson Drive
Ashwaubenon, WI 54304

PRSRT STD
U.S. POSTAGE PAID
SHAWANO, WI
PERMIT NO. 140

ECRWSS
Residential Customer

Coming to Waterford Park in 2024

