



# Kimberly Street Culvert Replacement (Between Buffalo and Glen)



# Introductions

## 1. Village Staff

- Brian Rickert, Director of Public Works
- Steve Birr, Village Engineer
- Matt Smith, Engineering Technician

## 2. DeGroot Construction

- Marty Jensen

# ASHWAUBENON



# Public Informational Meeting

- Brief Presentation of Project (10-15 Minutes)
- Question & Answers (10-20 Minutes)
- Individual Site-Specific Questions
- Matt Smith

[-msmith@ashwaubenon.gov](mailto:msmith@ashwaubenon.gov)

-920-593-4503

-Steve Birr

[-sbirr@ashwaubenon.gov](mailto:sbirr@ashwaubenon.gov)

-920-593-4500

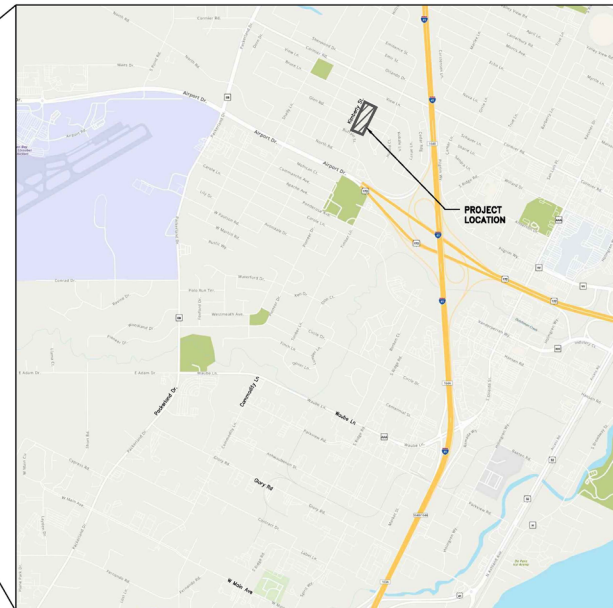
# ASHWAUBENON



# Project Area

## KIMBERLY STREET CULVERT REPLACEMENT VILLAGE OF ASHWAUBENON

BROWN COUNTY, WISCONSIN  
CONTRACT # A0017-09-24-00771



### CONTACT INFORMATION

#### UTILITIES

AT&T  
VICTORIA KASSAB (TELEPHONE)  
2037 ANN LANE  
GREEN BAY, WI 54304  
920-451-7512 / vkassab@att.com

WISCONSIN PUBLIC SERVICE (WPS)  
JEFF HEISELMANN (GAS & ELECTRIC)  
2030 S ADAMS AVE / P.O. BOX 19001  
GREEN BAY, WI 54307-8001  
920-433-1277

CHARTER  
JOEY THEL (CABLE)  
3030 E. DESTINATION DRIVE  
APPLETON, WI 54912  
920-831-9258

MI-TECH  
ZACH CASPARY  
40 S ROLLING MEADOWS DRIVE  
FOND DU LAC, WI 54937  
920-924-3690 / zcaspar@mi-tech.com

DNR  
DEPARTMENT OF NATURAL RESOURCES  
SAMAH ANDERSON  
2984 SHAWANO AVENUE  
GREEN BAY, WI 54313-6727  
(920) 862-5445  
samah.anderson@dnr.wisconsin.gov

#### OWNER CONTACT

VILLAGE OF ASHWAUBENON  
STEVE BIRK, VILLAGE ENGINEER  
2155 HELMSTON WAY  
ASHWAUBENON, WI 54304  
sbirk@ashwaubenon.com

#### DESIGN CONTACT

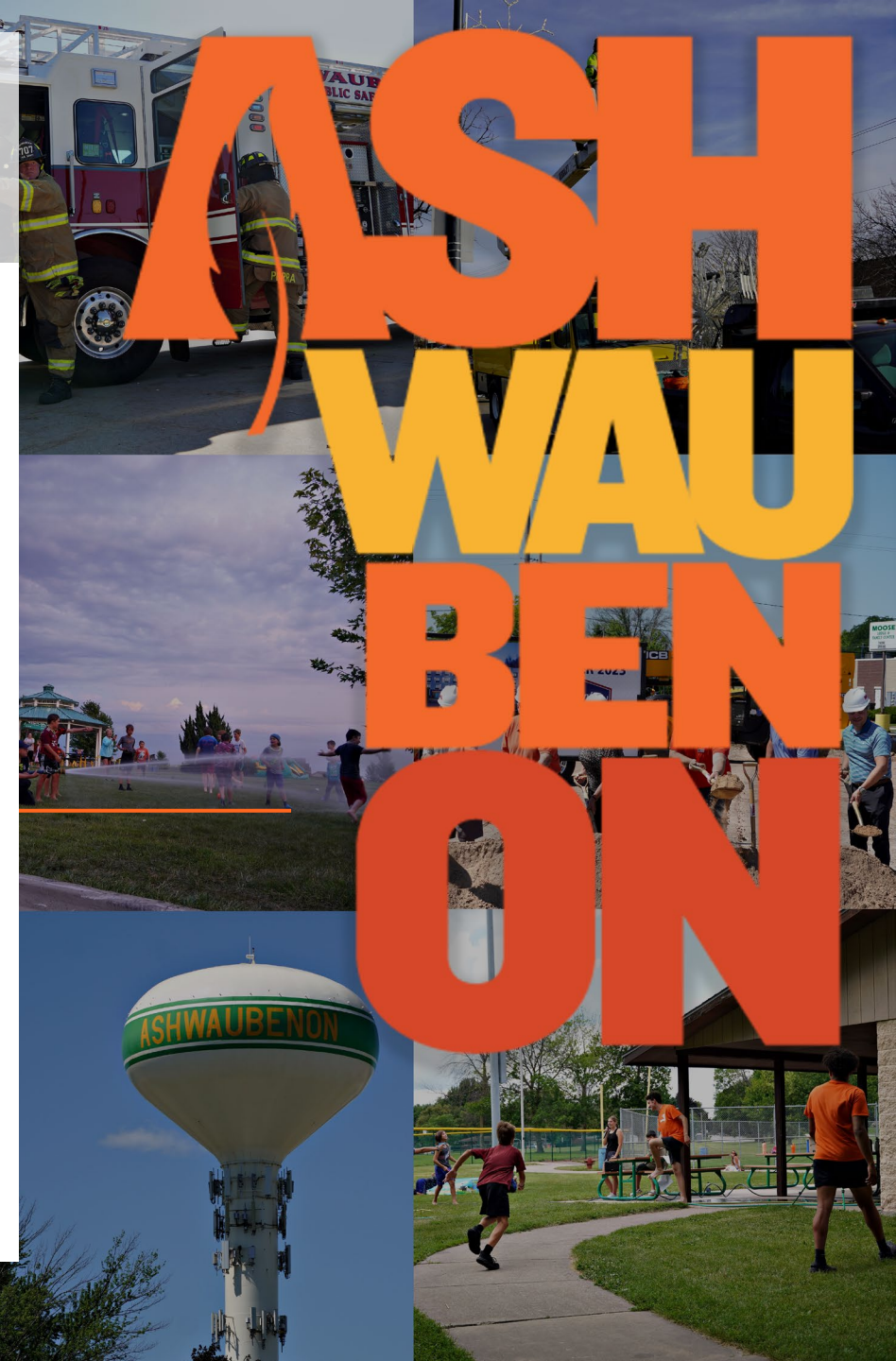
McMAHON  
ANDREW W. SCHMIDT  
1445 McMAHON DRIVE  
NEENAH, WI 54956  
(920) 751-4200  
aschmidt@mcgrp.com



### SHEET INDEX

- 01 - ABBREVIATIONS SYMBOLS NOTES
- 02 - SURVEY CONTROL
- 03 - EXISTING CULVERT
- 04 - PROPOSED CULVERT
- 05 - MISCELLANEOUS DETAILS
- 06 - EROSION CONTROL DETAILS

DATE  
MAR, 2008  
PROJECT NO.  
A0017-09-24-00771





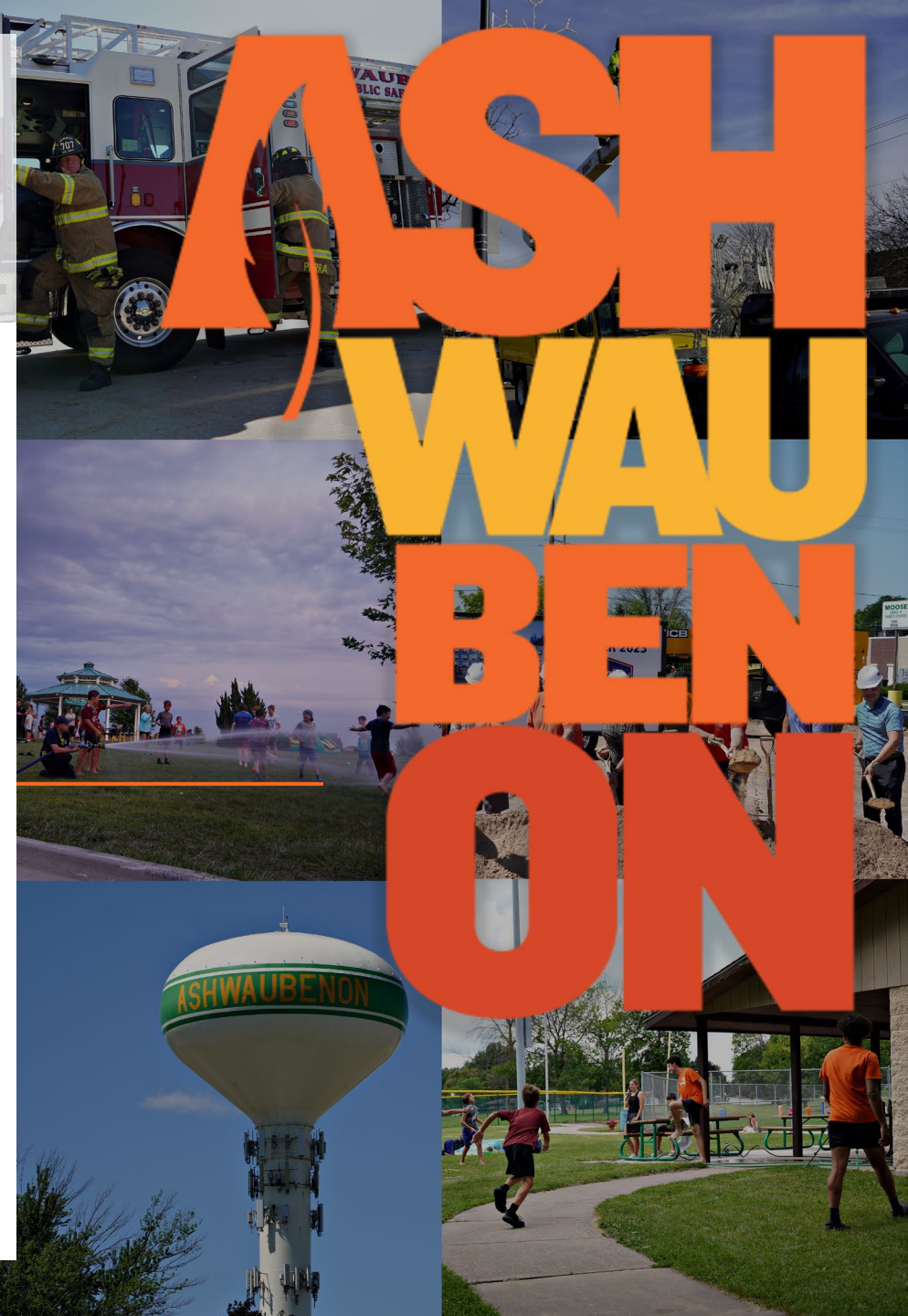
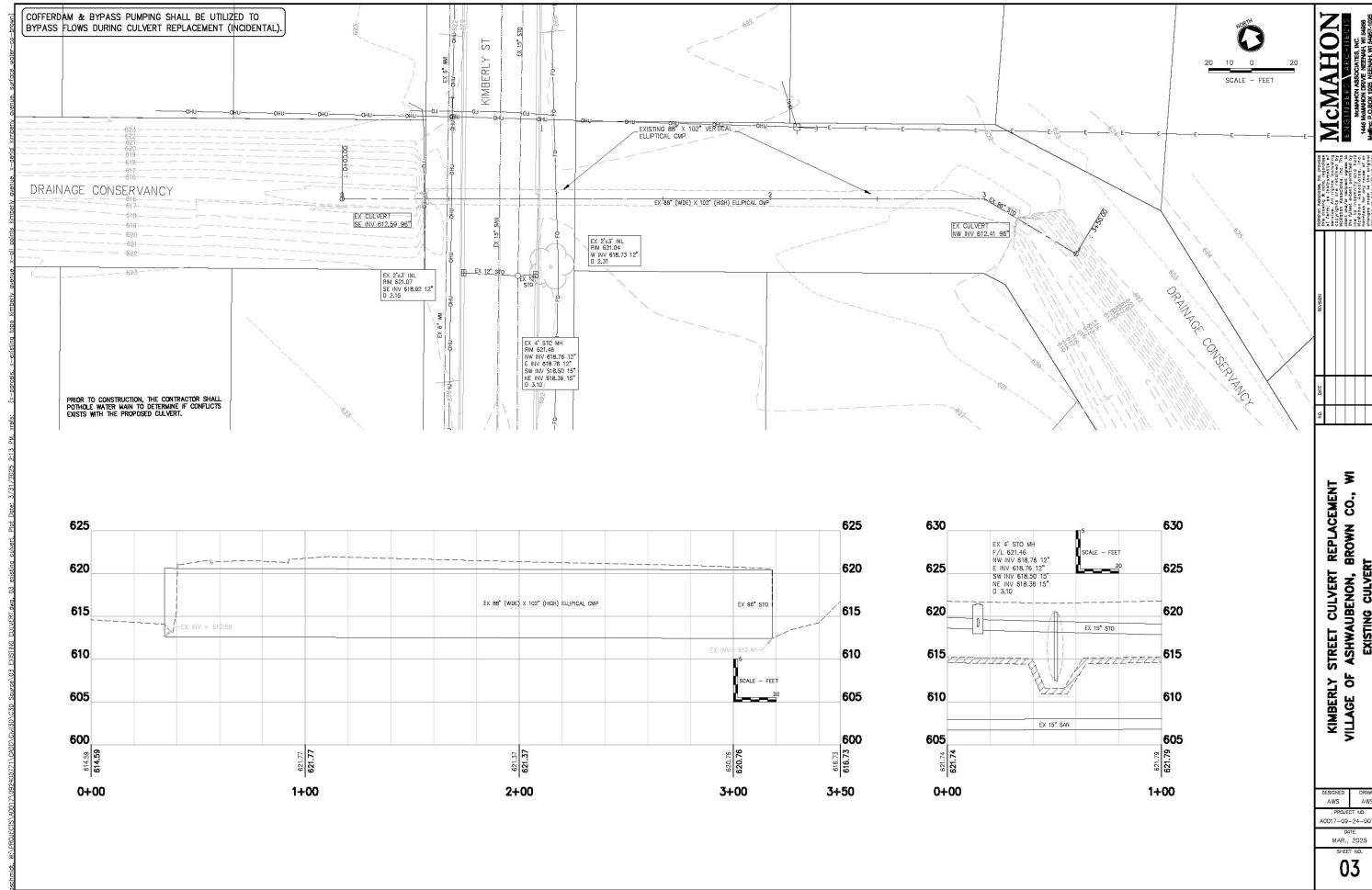
# Project Scope

- Removals
- Relocation of Watermain
- Setting of Box Culvert
- Grading
- Paving (Curb/Gutter and Asphalt)
- Restoration

# ASHWAUBENON

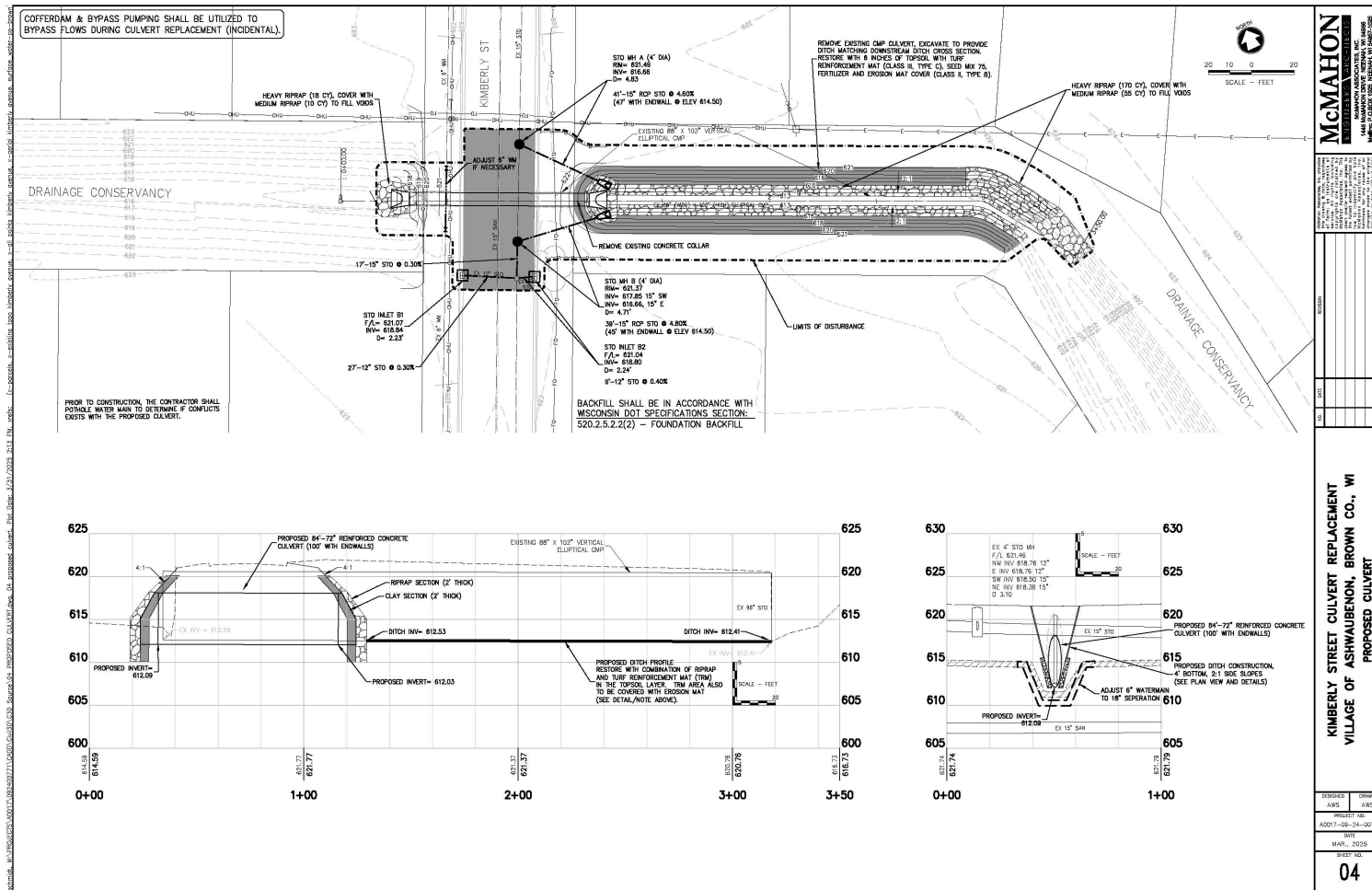


# Project Plans – Existing Culvert





## A collage of four images representing different aspects of Ashwaubenon. The top-left image shows two firefighters in full gear next to a red and white fire truck. The top-right image shows a park with a gazebo and people. The bottom-left image shows a water tower with 'ASHWAUBENON' written on it. The bottom-right image shows a baseball field with players. The word 'ASHWAUBENON' is written in large, bold, orange letters across the center.





# Project Schedule

# ASHWAUBENON

-Contractor Plans to Start Mid to Late August

-Project duration is 3-4 Weeks

-Currently no work is scheduled for nights or weekends





# Project Impacts

- Roadway will be hard closed
- Restoration of the original natural stream banks
- Water will be shut off for a portion of a day while the water main is being relocated (advanced notification will occur)

# ASHWAUBENON



# Project Safety

- Travel speed within the Project limits should be reduced
- Keep a distance from the heavy equipment as there is limited vision (if you can not see the operator, they can not see you)
- Be sure that you and your kids stay away from the equipment when parked or operating
- Keep an adequate distance away from the large excavation

# ASHWAUBENON





# Project Communications

-Public Informational Meeting

-Social Media

-Website: [www.ashwaubenon.gov](http://www.ashwaubenon.gov)

Engineering / Construction

5-Year Paving Plan

2023 Pavement Ratings

Bid Information

Capital Improvement Plan

**Current Construction**

Babcock Monopole Installation

Babcock Standpipe Removal

Cormier Sidewalk Replacement

Globe Street Lift Station Rehabilitation

Glory Road Culvert Replacement

Kimberly Street Culvert Replacement

Packerland Drive and Grant Street Roundabout

Rectangular Rapid Flashing Beacon

Traffic Signal Controller and Cabinet Replacement

Maps & Apps

Permits / Applications

Property Line Information

TDS Fiber Construction

Government / Departments / Engineering / Construction / Current Construction

## Current Construction

- Babcock Monopole Installation
- Babcock Standpipe Removal
- Cormier Sidewalk Replacement (Shady to Ridge)
- Globe Street Lift Station Rehabilitation
- Glory Road Culvert Replacement (between Commodity and Ridge)
- Kimberly Street Culvert Replacement (between Buffalo and Glen)
- Rectangular Rapid Flashing Beacon on Cormier and Holmgren
- TDS Fiber Construction
- Traffic Signal Controller and Cabinet Replacement
- 2025 Road Resurfacing

## Parks Projects

- Argonne Park Trail and Board Walk Installation
- Ashwaubomay River Trail Pathway Extension / Patches
- New Playground Equipment at Ashwaubomay Lake
- New Park (on Element Way)

# ASHWAUBENON



# Next Steps

-Stay away from freshly poured concrete this includes pets and children

-If you have private utilities in the Right of Way or near the sidewalk please have them removed (Example: Irrigation, Invisible Dog Fences)

# ASHWAUBENON



# Questions?

-Feel free to Call Engineering  
Department

920-492-2308

-or-

Email

[msmith@ashwaubenon.gov](mailto:msmith@ashwaubenon.gov)

[sbirr@ashwaubenon.gov](mailto:sbirr@ashwaubenon.gov)

[brickert@ashwaubenon.gov](mailto:brickert@ashwaubenon.gov)



# ASH WAU BEN ON

